

Focusing on Colorado's Health

2015

Annual Report **2015**



Michele Lueck
President and CEO

When Colorado policymakers needed cutting-edge research in 2015, they looked to the Colorado Health Institute. And we delivered.

Here's just some of our work:

- The 2015 Colorado Health Access Survey (CHAS), the state's best source of information on coverage and use of care, which continues to be distributed widely across the state.
- A ZIP code-based analysis of CHAS insurance data, which took the survey data down to the neighborhood level.
- A nationally recognized analysis of Colorado's experience with legalized marijuana.
- The debut of the Colorado Access to Care Index, which assigns an easy-to-understand number for a broad range of access measures.
- A timely report and case studies on integrating behavioral health and primary care — the topic of Colorado's State Innovation Model program.
- The third annual "Reaching Our Peak: Scorecard for a Healthier Colorado."
- A starring role during summer legislative hearings on Connect for Health Colorado.

We disseminated our work widely to reinforce the efforts underway across the state, while connecting

health and health policy leaders with the best thinking.

CHI produced more than 40 publications. Our team made roughly 100 presentations and panel appearances across the state and the country. And we sponsored the Hot Issues in Health Care conference, a forum for nearly 200 of Colorado's leading health policymakers and legislators to meet and learn about new ideas.


CHI is unique in Colorado. Our information and expertise occupies a niche that no other organization can fill.

Since our founding in 2002, we have adapted to an ever-changing marketplace. CHI's work is essential to making informed policy decisions at all levels, from individuals and families to neighborhoods and towns to statewide initiatives.

Our work makes Colorado a healthier place.

We look forward to working with you across all four corners of our amazing state in 2016 and beyond.

A handwritten signature in black ink that reads "Michele Lueck". The signature is fluid and cursive, with a long horizontal stroke at the end.



100+
Presentations

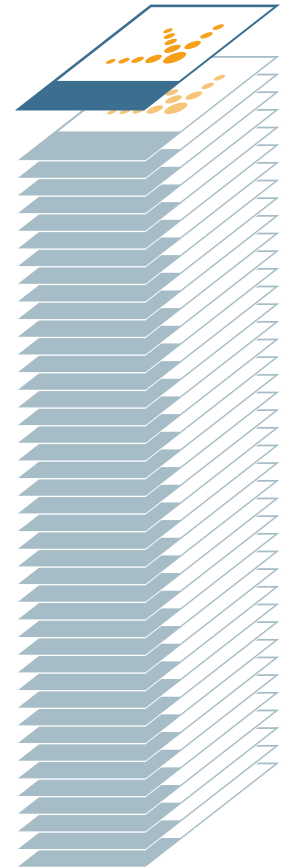
????????? ?????????? ?????????? ?????????? ??????????
 ?????????? ?????????? ?????????? ?????????? ??????????
 ?????????? ?????????? ?????????? ?????????? ??????????
 ?????????? ?????????? ?????????? ?????????? ??????????
 ?????????? ?????????? ?????????? ?????????? ??????????
 ?????????? ?????????? ?????????? ?????????? ??????????
 ?????????? ?????????? ?????????? ?????????? ??????????
 ?????????? ?????????? ?????????? ?????????? ??????????
 ?????????? ?????????? ?????????? ?????????? ??????????

400 Information Requests Answered



500+ Facebook Likes

40 Publications




3,900 Twitter Followers

100 Blogs
36 Insight Reports

200 People at Hot Issues in Health Care

One Alice Rivlin

Keynote speaker at Hot Issues in Health Care



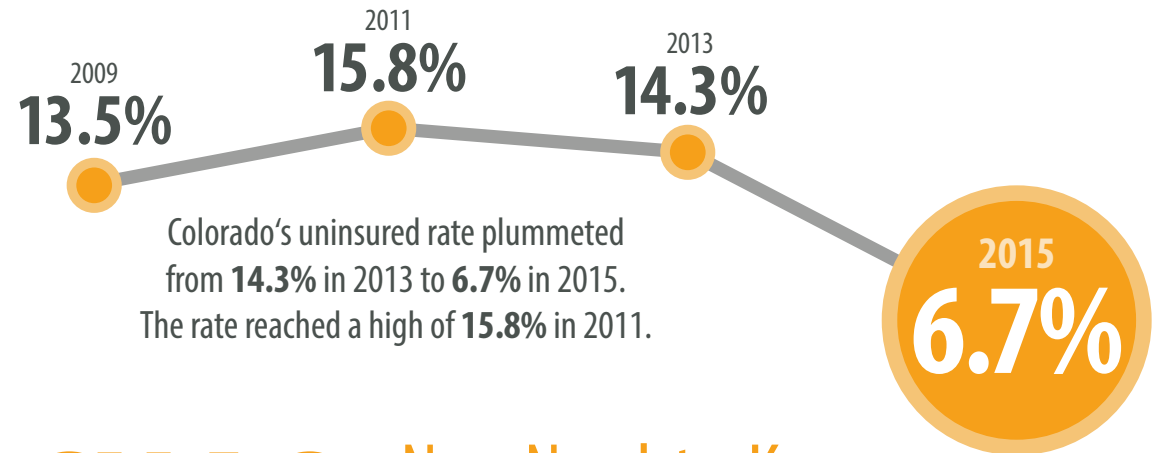


Celebration of the Decade

Three CHIs celebrated their 10-year work anniversaries in 2015: Vice President Amy Downs; Director of Research on Coverage and Access Jeff Bontrager; and Senior Administrative Assistant Kathy Helm.

The year that Amy, Jeff and Kathy joined CHI, Lance Armstrong was still a hero, claiming his seventh Tour de France victory. Pope John Paul II died. And YouTube debuted, offering a stage for the overlooked talents of cats around the world.

Congratulations to our 2005 trio.



CHAS: New Need-to-Know Numbers On Health Access

The Colorado Health Access Survey (CHAS) provided the state with its first comprehensive look at the effects of the Affordable Care Act in Colorado. The headline — a drop in the uninsured rate to 6.7 percent — was reported far and wide, with more than 20 distinct media articles. Nearly 1,500 people attended CHAS presentations by the CHI team.

Our 10 Most-Read Blogs of 2015

1. TABOR and the Magic of the Hospital Provider Fee
2. Location, Location, Location: Health Insurance By Zip Code In Colorado
3. New Data On Colorado's Child Obesity Rate
4. Why Medicaid Maps Matter
5. Legislative Roundup: Death With Dignity Bill Expires, For Now
6. Hick Calls For Budget Changes; LARC Funding Bill Faces Long Odds
7. Dreaming of CHAS
8. Health Data For All 64 Counties Now Available
9. Safety Net Updates: Working On the CHAS . . . And a Wedding
10. Weekly Legislative Roundup: Health Committees Get To Work

Click on any report to read it on CHI's website. But clear your calendar – it will take time to finish them all.

Title: "A New Day in Colorado — Health Insurance Reaches Record High: Findings from the 2015 Colorado Health Access Survey"

Lead Analysts: Natalie Triedman, Tamara Keeney, Deb Goeken, Joe Hanel, Amy Downs

The 2015 Colorado Health Access Survey made the biggest splash of any CHAS release so far. We want to point out that we rearranged the annual work calendar of many of our team members in order to release the CHAS two months ahead of schedule and provide timely data on the ACA's effects in Colorado.

Title: "Counting Colorado's Uninsured 2015: The Latest Estimates"

Lead Analyst: Emily Johnson

This report delves into the newest estimates of uninsurance, both in Colorado and across the nation, from the American Community Survey and the Current Population Survey and compares their findings and methodology to the CHAS.

Title: "Location, Location, Location: Health Insurance by ZIP Code"

Lead Analyst: Rebecca Silvernale, Amy Downs, Joe Hanel, Deb Goeken, Tamara Keeney

CHAS data offer the most detailed look at the health access of Coloradans. But even with a 10,000-person sample, it cannot be sliced finely enough to be reliable at the neighborhood level. CHI developed a method to apply CHAS data at the ZIP code level. We started with the 2013 uninsured rate and were able to generate a probability of a person lacking insurance in each ZIP code in Colorado. In addition to a report, we produced an interactive story map of the state. The second report repeated the analysis with 2015 CHAS data. This project allowed us to refine our methods for future localized looks at a number of CHAS questions.

Title: "King v. Burwell: What's Next After the Supreme Court Ruling?"

Lead Analyst: Joe Hanel

The King v. Burwell case represents the last judicial challenge to a major tenet of the ACA. CHI was ready with an on-the-spot analysis — published just hours after the decision was released — on what the case meant for Colorado, and a series of questions Colorado policymakers will need to address in light of the ruling.

Title: “Narrow Networks in Colorado: Balancing Access and Affordability”

Lead Analysts: Amy Downs and Mara Baer (consultant)

Network adequacy is moving to the forefront as a health policy issue in Colorado and across the nation. In this series, the Colorado Health Institute sets the stage for an evidence-based discussion, defining the issue, providing a historical perspective, and looking at how stakeholders will be addressing the topic.

Title: “Without a Net: Understanding the Impact of Medicaid Expansion on Colorado’s Oral Health Safety Net”

Lead Analysts: Hannah Wear and Sara Schmitt

Colorado Medicaid has expanded its dental benefits for its rapidly growing membership, raising concerns about the ability of Colorado’s dental workforce to handle the extra work. CHI surveyed safety net clinics across the state to see how they are coping with the influx of patients. The findings suggest the oral health safety net is under-resourced and will need additional government and private sector funding and support to continue improving patient access.

Title: “2015 Legislation in Review: Analyzing Key Health Policy Trends”

Lead Analysts: Allie Morgan and Joe Hanel

The 2015 legislative session saw Republicans in control of the Senate majority for the first time in a decade. CHI’s annual review of health policy legislation tracked about five dozen bills and distilled themes to show the types of legislation that succeeded or failed under split partisan control of the legislature. We found that legislators were looking for ways to improve health care without investing much more state money. Legislators introduced many bills that were considered partisan or culturally controversial. All of these bills failed. The report looks ahead to the 2016 session and predicts the same dynamics.

Title: “Section 1332 State Innovation Waiver: A Vehicle for Change”

Lead Analysts: Jeff Bontrager and Nina Roumell

The ACA’s Section 1332 has begun to catch the attention of state policymakers, who are intrigued by the possibility that they could rewrite major portions of the act for their states. This primer on 1332 waivers stemmed from a request by the Colorado Health Insurance Exchange Oversight Committee to educate its members about waivers. CHI team members also made a presentation on waivers during the legislative session that was attended equally by Republicans and Democrats.

Title: “Reaching Our Peak 2015: Scorecard for a Healthier Colorado”

Lead Analyst: Jessica Fern

This project is an annual analysis of the impact of policies, programs and politics on statewide efforts to make Colorado a healthier state. The report summarizes policy changes and program developments in five key areas where work is underway — schools, the workplace, communities, the health care delivery system and the places where we age — and highlights what is on the horizon for the year ahead.

Title: “Annual Legislative Preview: Winds of Change at the Capitol”

Lead Analyst: Allie Morgan and Joe Hanel

CHI’s annual preview was released at the beginning of the 2015 session and it predicted a new political reality brought about by split partisan control that would make it harder to pass legislation. The report looks at health legislation that was likely to be introduced and examines the governor’s budget request, with a special emphasis on health and human service agencies.

Title: “Colorado Local Data Workbooks”

Lead Analyst: Rebecca Silvernale and Tamara Keeney

CHI assembled Local Data Workbooks to help counties analyze the characteristics of their communities. These workbooks contain data on more than 50 indicators, including demographics, the health care workforce and health system utilization. The accompanying brief looks into the problems surrounding health workforce data that inspired this project. The brief also provides guidance on how to use and interpret the numbers to drive decision-making.

Title: “Filling the Dental Gap: Can Colorado Meet the Growing Need?”

Lead Analyst: Sara Schmitt

Colorado reached a historic milestone in 2014, when it began offering dental insurance to each of the state’s 1.1 million Medicaid clients. This decision placed Colorado among the nation’s leaders in oral health coverage for those with the lowest incomes. This analysis by the Colorado Health Institute, building on research published in 2013, finds a widening gap between the demand for oral health care by Medicaid enrollees and the supply of oral health providers.

Title: “Colorado’s Health Care Safety Net”

Lead Analyst: Anna Vigran

This package contains a number of different elements, including a safety net primer updated for 2015, to help stakeholders understand the reach and importance of the state’s safety net. For the second year, CHI included an interactive map that allows users to click on safety net locations to get more information.

Title: “New Models for Integrating Behavioral Health and Primary Care: Lessons from Six Colorado Health Care Providers”

Lead Analyst: Anna Vigran

Colorado is forging ahead with new models of care delivery that integrate the treatment of behavioral health and physical health. CHI studied six practices that are testing an array of approaches to integration, tailoring models to their locations, their client populations, their workplace cultures, and their available resources, among other considerations. CHI also created a new workbook, Behavioral Health Data in Colorado. The workbook is a compilation of the latest available data on the behavioral health of adults, high school students and children in each of the state’s 21 Health Statistics Regions (HSRs).

Title: “Legal Marijuana Coming into Focus: An Analysis of Colorado’s Policy Landscape”

Lead Analyst: Sara Schmitt

The size and scope of Colorado’s marijuana market is beginning to come into focus in this second year of legalization. Colorado was the first state to allow legal retail sales of marijuana for non-medical purposes. As other states and countries consider legalization, they are looking to Colorado for advice. CHI analyzed the evolving marijuana policy landscape and identified six lessons from Colorado’s experience.

Title: “Flashpoints and Fixes: An Asset and Gap Analysis of Barriers to Care for Coloradans with High Health Needs” (Prepared for The Denver Foundation and released publicly for use by anyone)

Lead Analysts: Jeff Bontrager and Anna Vigran

The Denver Foundation engaged CHI to study access to care, particularly among Coloradans with high health needs. The analysis identifies meaningful and data-based opportunities for grantmaking by the new Colorado Health Access Fund, which launched in April 2015. This report includes insight from more than 100 Colorado experts who participated in key informant interviews and regional community dialogues, as well as the latest statistics on Coloradans’ health status, experiences with accessing care, and projected health needs.

Title: “Fruit and Vegetables Missing from the Menu in Colorado: Evidence-Based Strategies to Address the Problem”

Lead Analyst: Jessica Fern

This paper outlines promising and proven strategies that help Coloradans make healthier choices, boosting fruit and veggie consumption statewide. The collaboration between the Colorado Department of Public Health and Environment (CDPHE) and CHI is part of a larger stakeholder initiative to support and encourage data-driven and evidence-based discussions about ways to promote Healthy Eating, Active Living (HEAL) in Colorado.

Title: “Access to Care Index”

Lead Analyst: Jeff Bontrager and Anna Vigran

On a scale of one to 10, how easy is it for a Denver resident to get health care? What about someone living on the Western Slope? Does race or ethnicity make a difference? What about income? The first Colorado Access to Care Index — a collaborative project of CHI and the Colorado Coalition for the Medically Underserved — addresses these questions while providing a new way to measure the impact of the ACA. The index is designed to help communities across Colorado better understand access to care challenges and to guide conversations about how to address them. Each region as well as the state has an overall score from one to 10 based on their scores in each of the three components of access — Potential Access, Barriers to Care and Realized Access.

Title: “Assessing the Need for School-Based Health Center Services in Colorado, 2015”

Lead Analyst: Natalie Triedman

This assessment from CHI identifies schools and school districts that could most benefit from the addition of a school-based health center. The project was a partnership between CHI, the Colorado Association for School-Based Health Care (CASBHC) and the Colorado Department of Public Health and Environment.

Title: “Access Challenges Arise From Expanded Medicaid Dental Benefit”

Lead Analyst: Jeff Bontrager

CHI’s SNAC Labs continued to bring together safety net experts from across the state to discuss emerging issues. This issue of “Food for Thought” reported on the May SNAC Lab, which tackled the effects of the expanded Medicaid dental benefit and the resulting access problems, especially in rural areas.

Title: “Interest High in Colorado for New Access to Care Index”

Lead Analyst: Jeff Bontrager

The Access to Care Index debuted at the March SNAC Lab, and “Food for Thought” reported on the release and the SNAC Lab audience’s positive reception. Colorado’s overall access to care score at the time was 7.7 on a scale of one to 10. The score tells us that, by and large, most Coloradans are able to get care when needed, but important disparities remain to be addressed.

Title: “Expand, Explore, Evaluate: The Accountable Care Collaborative’s Big Initiatives”

Lead Analyst: Jeff Bontrager

The Accountable Care Collaborative (ACC) represents Colorado’s signature effort to reform how primary care is delivered to Medicaid enrollees. Budget numbers from its third year of operation show a net savings of between \$29 million and \$33 million. Participants in the January SNAC Lab discussed progress in implementing the ACC.

Title: “Planned Changes to ACC Stir Up Debate”

Lead Analyst: Jeff Bontrager

The October and November SNAC labs looked at the Department of Health Care Policy and Financing’s plans for the Accountable Care Collaborative (ACC). Part 1 focused on an overview of the changes that could come in the new contracts for the ACC. The biggest switch would be integrating behavioral health care into the ACC. SNAC lab attendees expressed strong feelings about the department’s plans.

Title: “Higher Rate of Eligible Coloradans Are Getting Health Coverage”

Lead Analyst: Emily Johnson

This research brief updates CHI’s annual Medicaid and CHP+ enrollment analysis, which features an estimate of those eligible but not enrolled. For the first time, it analyzes the number of Coloradans who were eligible for insurance tax credits but remained uninsured. It also debuts an updated method for estimating how many of the uninsured are undocumented immigrants.

Title: “Rates on a Roller Coaster: A Look at Colorado’s 2016 Individual and Small Group Insurance Premiums”

Lead Analyst: Joe Hanel

This analysis was published just hours after the Division of Insurance (DOI) gave final approval to the 2016 insurance rates. Our relationship with DOI staff allowed us to get a sneak peek at the numbers a day before they were released. CHI’s brief was widely cited by legislators and the media.

From Washington to Denver to Glenwood Springs, you had to work hard in 2015 to find a health policy event that CHI missed.

January

- Jeff Bontrager and Natalie Triedman presented “The ACA in Images” at the Colorado chapter of the Healthcare Financial Management Association’s Uninsured Conference. Their presentation used images and data to explore the ACA’s impact on Colorado.
- CHI sponsored a breakfast at the beginning of the legislative session to reacquaint veteran lawmakers with CHI and to get to know the freshmen.

February

- Michele Lueck and Jeff presented “The Promise of Health Care Integration: SIM, Scope of Practice and Shaping the Future,” which gave lawmakers an overview of efforts to integrate behavioral health and primary care in the state; why these initiatives are happening; and decisions that legislators will face in the future.
- Anna Vigran co-presented with Allison Grace Bui of the Colorado Department of Public Health and Environment (CDPHE) a program on health data for Colorado and where to find it to the Community Health Assessment class at the Colorado School of Public Health.
- Michele presented the results of the 2014 Colorado Health Report Card to legislators and the public at the state Capitol.

- Tasia Sinn and Amy Downs testified before the House Committee on Health, Insurance and Environment about a bill to provide tax credits to people who upgrade their homes to allow them to age in place.

March

- CHI launched Brews and Views at the Denver Beer Company, a panel discussion that looked at the King v. Burwell case one day after oral arguments at the Supreme Court. Our panelists, Leo Tokar, Gerald Niederman and Melissa Hart, examined the legalities of the case and what it meant for Colorado. A standing-room-only crowd gave the event good reviews — and not just for the beer.
- Amy and Michele began a series of presentations to the Colorado Commission on Affordable Health Care. The presentations featured research by CHI on various ways to quantify health care spending in Colorado.
- Tasia and Amy spoke to legislators and staff about 1332 waivers available under the ACA. The presentation was our most successful of the legislative session in terms of attendance by lawmakers from both sides of the aisle.
- Tasia presented to the first meeting of the No Wrong Door planning group.

- Sara Schmitt and Hannah Wear presented the findings of their report, “Filling the Dental Gap: Can Colorado Meet the Growing Need?” to the CDPHE’s Oral Health Collaborative.
- Allie Morgan and Joe Hanel presented a legislative half-time report via webinar.
- Sara joined Sue Birch, executive director of the Colorado Department of Health Care Policy and Financing, for a forum with Larimer County legislators on health in northern Colorado.

April

- Michele served as a panelist for a National Governors Association conference in Baltimore titled “The Next Wave of Innovation: A Convening of Round 1 and Round 2 SIM Awardees.”
- Michele spoke to a group of past and current Public Interest Fellows from Colorado College at a lunch sponsored by CHI.
- CHI had a table at the Culture of Health Conference in Denver.
- Amy spoke at the 2015 Engaged Benefit Design Conference about the Engaged Benefit pilot program at San Luis Valley Health.
- Jeff spoke about innovative ways to measure children’s health access to the Children in the Vanguard network organized by the National Academy for State Health Policy.

- Amy spoke to the Colorado Medical Society in Vail about 10 pivotal health care bills from the past 10 years.
- Michele presented CHI's report on behavioral health integration during the National Governors Association's workforce day.

May

- Michele, Sara and Jessica Fern went to New Orleans for the National Network of Public Health Institutes conference. Sara spoke on a panel titled "Sharing Data, Sharing Services: Practical Strategies and Lessons Learned" on CHI's experience working with local public health agencies in Colorado on issues of data sharing. Sara also presented a poster on CHI's work on the Medicaid oral health workforce.
- Anna presented data from the Colorado Access to Care Index to the Rocky Mountain Colorectal Screening Summit.
- Sara provided an update on the 2015 Colorado Health Report Card to the Health Childcare Colorado Coalition at the Clayton Early Learning Center.
- Michele and Hannah presented data to 2040 Partners for Health on health outcomes in Denver and Aurora to orient new medical school residents to the health landscape around the Anschutz Medical Campus.

June

- Jeff testified to the Colorado Health Insurance Exchange Oversight Committee, in response to an invitation from chairwoman Ellen Roberts, about ACA waivers and options for Connect for Health Colorado. Jeff's testimony

sparked a robust debate, and the committee invited him back to its next hearing to continue the discussion.

- CHI convened a panel discussion on insurance provider network adequacy. Michele moderated the panel, which featured Peg Brown, Deputy Commissioner for Consumer Affairs, Colorado Division of Insurance; Adela Flores-Brennan, Executive Director, Colorado Consumer Health Initiative; Janet Pogar, Regional Vice President of Provider Solutions, Anthem Blue Cross and Blue Shield; and Dr. Mike Volz, President-Elect, Colorado Medical Society.

July

- Amy participated in a Biennial of the Americas event titled "Pathways to Healthier People and Societies."
- Jeff and Anna traveled to Glenwood Springs to give a presentation to the West Mountain Regional Health Alliance.
- Allie Morgan and Joe Hanel spoke to Club 20's health committee in Rifle about the King v. Burwell case and the next big issues in Colorado health policy.
- Sara led a CHI team in presenting a paper on medical homes at the Colorado Health Symposium in Keystone.
- Michele led a Symposium breakout session on the work of the BC3 group.

August

- Brian Clark shared his expertise on visual communication in the health care field with



500 Likes

CHI surpassed 500 likes on our Facebook page. We celebrated with — what else? — a selfie that we posted to our page. Alas, it did not go viral.

students at Colorado State University in Fort Collins.

September

- We released the CHAS at four events in Denver and Aurora as well as a briefing for journalists.
- CHI took the Public Health in the Rockies conference by storm, giving seven presentations at the Vail gathering. They included:

- “What Matters Most for Childhood Obesity in Denver?” a close-up analysis of the disparities in childhood obesity rates across the city, by Tamara and Hannah.
- “The Politics of Public Health: Hurdles for Public Health Bills in Colorado’s General Assembly,” by Allie and Joe.
- A sneak peek at the 2015 Colorado Access to Care Index by Nina Roumell.
- Highlights of the 2015 CHAS by Natalie.
- “Past, Present and Future of School-Based Health Care in Colorado” also by Natalie.
- “Early Results from Affordable Care Act Implementation in Denver,” a partnership of Denver Health and Kaiser Permanente Colorado in which Natalie participated.
- The HEAL Surveillance Workgroup’s presentation included a segment by Jessica.
- Jeff presented to the Community Health Action Coalition’s 6th Annual Health Summit in Durango. His talk was titled, “An Ounce of Prevention: The Value of Preventive Care and Wellness for Colorado.”
- Jeff and Natalie spoke about the 2015 CHAS to state Sen. John Kefalas’ class at Colorado State University.
- Jeff and Natalie also spoke at the Building Better Health conference about what the 2015 CHAS tells us about Coloradans who remain uninsured.
- Allie presented to the Colorado Economic Forum in Loveland.
-

October

- In October, CHI staff began to take our CHAS findings on the road in a series of regionally tailored presentations called “Highway to Health.” Michele kicked it off with a presentation to the Community Health Partnership in Colorado Springs.
- Amy and Policy Analyst Emily Johnson spoke to the Mile High Health Alliance.
- Natalie presented CHAS findings for rural areas to the 2015 Rural Health Conference in Colorado Springs.
- Michele and Allie discussed health data for the Eastern Plains at a retreat of the High Plains Research Network.
- The Milbank Memorial Fund invited CHI to talk about Colorado’s program to provide Long-Acting Reversible Contraception (LARC). Legislators and state agency heads from around the country attend Milbank’s meetings. Michele and Allie went to Salt Lake City for the first of CHI’s three presentations.
- Natalie and Allie presented CHAS findings to the public in Salida.
- Amy and Joe gave the LARC presentation in Minneapolis.

November

- Michele was interviewed by the PBS Newshour for a nationally broadcast story about the failure of health CO-OPs around the country, including the Colorado HealthOP.

- Allie and Natalie presented CHAS findings at a town hall meeting for Fort Collins-area legislators at Odell Brewing Co.
- Tamara and Emily presented CHAS data to medical students at the Anschutz campus during the Rural Grand Rounds Impact Series.
- Michele and Allie gave the final LARC presentation in Nashville.
- CHI brought former U.S. Senate Majority Leader Bill Frist to Denver for a breakfast meeting with public health and health care delivery leaders.
- Jeff and Tamara presented CHI’s data to the Jefferson Center for Mental Health.
- Amy spoke to the Colorado Business Group on Health in Lone Tree. Amy also presented CHAS findings to ClinicNET.
- Jeff and Emily presented a webinar on how to use the various sources, including the CHAS, that report rates of health coverage.
- Allie presented at a town hall sponsored by Rep. Lois Landgraf in Colorado Springs.

December

- Hot Issues in Health Care featured a day of presentations from nearly every member of the CHI staff on current topics, including the LARC debate, Affordable Care Act waivers and measuring health reform at the local level.
- Michele presented CHAS findings in Grand Junction.

Statement of Activities | Year Ended December 31, 2015

Revenue and Support	
Grant Revenue	1,009,000
Contract Revenue	480,346
Investment Return	(3,244)
Miscellaneous Income	20,305
Net assets released from restrictions (note 1)	1,877,889
Expenses	
<i>Program Services</i>	
Health Information	3,076,140
Total Program Services	3,076,140
<i>Supporting Services</i>	
Management and General	380,504
Fundraising	159,799
Total Supporting Services	540,303

Total Expenses	3,616,443
Increase (decrease) in unrestricted net assets	(232,147)
<i>Changes in temporarily restricted net assets:</i>	
Contributions	796,900
Net assets released from restrictions (note 1)	(1,877,889)
Increase (decrease) in temporarily restricted net assets	(1,080,989)
Change in net assets	(1,313,136)
Net assets at beginning of year	6,309,330
Net assets at end of year	4,996,194
<i>Note 1: In 2015 net assets were released from donor restrictions based upon satisfaction of the following purposes:</i>	
Receipt of core funding payments from foundations	1,102,850
Expenditures of funds for specific projects	775,039
	1,877,889

Statement of Financial Position | December 31, 2015

Assets	
Cash and cash equivalents	719,622
Accounts Receivable	148,468
Contributions Receivable	3,467,413
Prepaid Expenses	45,717
Investments	537,096
<i>Property and Equipment</i>	
Furniture and Fixtures	254,661
Office equipment and computer software	566,572
Website	70,097
Leasehold Improvements	212,478
Less accumulated depreciation and amortization	(647,051)
<i>Net property and equipment</i>	456,757
Deposits	13,946
Total Assets	5,389,019

Liabilities and Net Assets	
Accounts Payable	9,785
Accrued Payroll	126,545
Deferred Rent	256,495
Total Liabilities	392,825
<i>Net Assets</i>	
Unrestricted	1,459,231
Temporarily Restricted	3,536,963
	4,996,194
Total Liabilities and Net Assets	5,389,019



Thank you from the CHI staff to our stakeholders and our funders.



The Colorado Health Foundation™



**THE
COLORADO
TRUST**

A Health Equity Foundation

CARING *for*
COLORADO
FOUNDATION

A Health Grantmaker

ROSE
COMMUNITY FOUNDATION