

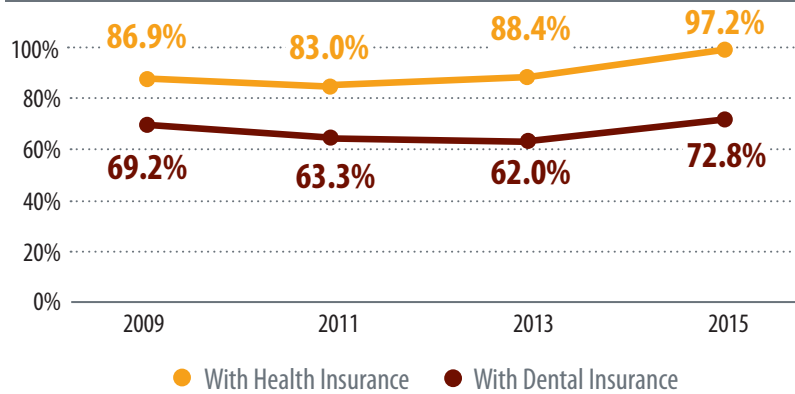
Jefferson County

Potential Access

Index Score **7.6**

Adequate insurance coverage and enough local care providers make it more likely that people will get care when they need it.

With Insurance, 2009-2015

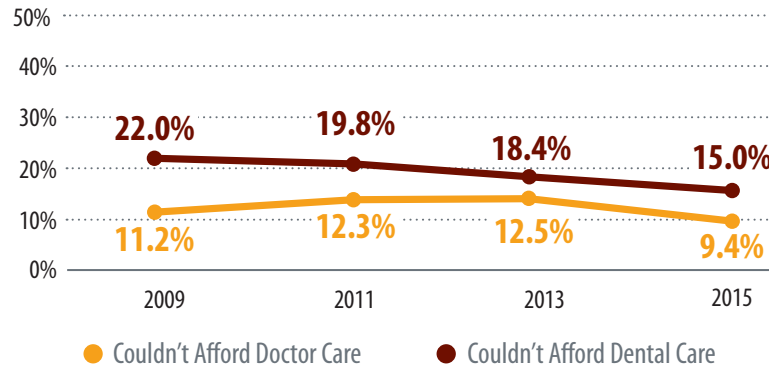


Barriers to Care

Index Score **9.0**

But many obstacles make it hard for people to get health care – even if they have insurance.

Couldn't Afford Medical or Dental Care in Past 12 Months, 2009-2015



In Past 12 Months ...



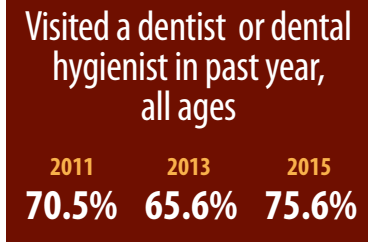
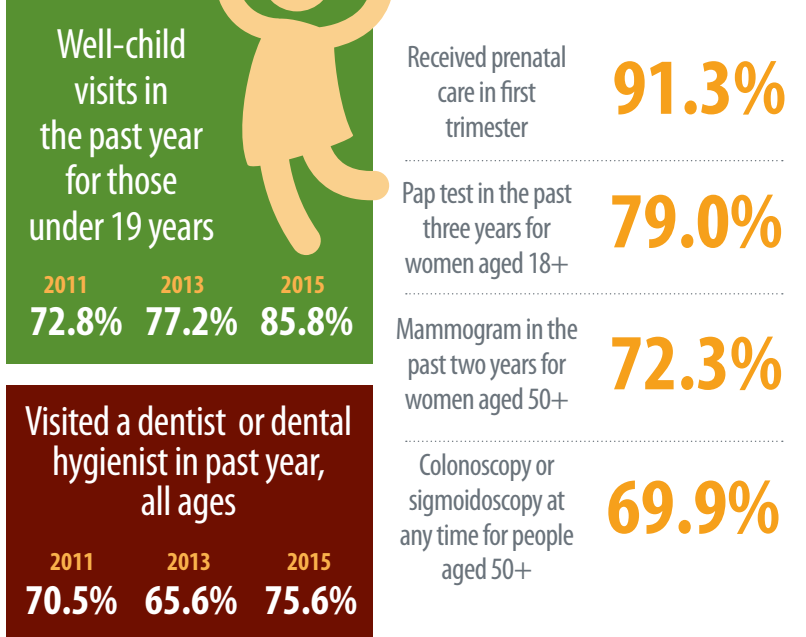
*Only includes those who were uninsured at some point in the past 12 months.

Realized Access

Index Score **7.6**

When people obtain preventive services, it's a good indication they have access to care. But hospitalizations or emergency room visits may indicate inadequate access.

Preventive Care



Avoidable Care



Updated December 2015 - Data source details available at ColoradoHealthInstitute.org/COAccessIndex - *2013 data

Health Care Workforce

*Per 1,000 Residents
2013 Data

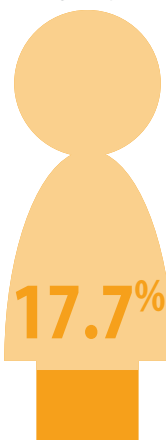
Primary Care Doctors **0.6**

Dentists **0.6**

Psychiatrists **0.1**

Underinsured Coloradans

Percentage of Population



Colorado Access to Care Index: Health Statistics Region 21

Jefferson County

Overall Score: 8.1 of 10

2009

2011

2013

2015

POTENTIAL ACCESS

Score: 7.6

Insurance Coverage

	Number	Percentage	Number	Percentage	Number	Percentage	Number	Percentage
Health insurance	471,973	86.9%	485,699	83.0%	495,792	88.4%	574,162	97.2%
No health insurance	71,305	13.1%	99,574	17.0%	65,024	11.6%	16,547	2.8%
Adequately insured	352,140	64.8%	360,096	61.5%	294,300	52.5%	377,458	63.9%
Underinsured	70,103	12.9%	74,488	12.7%	96,361	17.2%	104,287	17.7%
Dental insurance	376,164	69.2%	362,148	63.3%	342,282	62.0%	428,419	72.8%
No dental insurance	164,186	30.2%	209,602	36.7%	209,887	38.0%	160,001	27.2%

Health Care Workforce - Practicing Providers

	Number	Percentage	Number	Percentage	Number	Rate per 1,000	Number	Rate per 1,000
Primary care physicians					331	0.6		
Nurse practitioners					76	0.1		
Physician assistants					171	0.3		
Dentists					332	0.6		
Psychiatrists					39	0.1		

BARRIERS TO CARE

Score: 9.0

Barriers to Receiving Health Care Services

	Number	Percentage	Number	Percentage	Number	Percentage	Number	Percentage
Couldn't afford doctor care	60,574	11.2%	71,894	12.3%	69,636	12.5%	55,179	9.4%
Couldn't afford a prescription	60,514	11.3%	65,064	11.2%	44,731	8.0%	46,528	7.9%
Couldn't afford specialist care	54,702	10.1%	77,512	13.3%	69,389	12.5%	73,189	12.4%
Couldn't afford dental care	118,793	22.0%	115,472	19.8%	103,103	18.4%	88,326	15.0%
Couldn't get a doctor appointment when needed	84,314	15.6%	70,788	12.1%	71,752	12.9%	80,283	13.8%
Didn't go to doctor due to lack of transportation					12,479	2.2%	18,875	3.2%
Didn't have a usual source of care	59,239	11.0%	83,495	14.3%	77,810	14.0%	74,560	12.6%
Provider wouldn't accept insurance	37,711	7.0%	48,259	8.3%	29,035	5.2%	47,620	8.1%
Didn't get needed mental health care					49,270	9.6%	53,371	9.7%
Didn't seek care because uninsured*					37,501	54.5%	3,705	14.4%

REALIZED ACCESS

Score: 7.6

Use of Preventive Care

	Number	Percentage	Number	Percentage	Number	Percentage	Number	Percentage
Visited a dentist or dental hygienist	373,813	69.2%	411,333	70.5%	362,822	65.6%	443,251	75.6%
Received prenatal care in first trimester***					14,378	91.3%		
Received prenatal care as soon as wanted***			13,367	87.7%				
Well-child visit in the past year for those under 19 years	98,608	74.4%	95,214	72.8%	117,809	77.2%	111,788	85.8%
Pap test in the past three years for women aged 18+**					125,005	81.0%	120,673	79.0%
Mammogram in the past two years for women aged 50+**					72,867	75.0%	81,985	72.3%
Colonoscopy or sigmoidoscopy at any time for people aged 50+ **					129,270	69.7%	151,491	69.9%

Use of Avoidable Care

	Number	Percentage	Number	Percentage	Number	Percentage	Number	Percentage
Of those who went to the ER, went for a condition that could have been treated by a regular doctor	46,776	44.3%	35,535	32.3%	32,468	32.1%	35,113	31.8%

Preventable Hospital Admissions

	Number	Rate per 100,000	Number	Rate per 100,000
Uncontrolled diabetes, adults aged 18+	9	2.1		
Asthma, adults aged 18-39	25	17.9		

*Only includes those who were uninsured at some point in the past 12 months.

**Indicators from the Behavioral Risk Factor Surveillance System (BRFSS) are from the year prior.

*** Roll-up of 2009-11 data is displayed in the 2011 column and roll-up of 2011-2013 data is displayed in the 2013 column.

Data source details available at ColoradoHealthInstitute.org/COAccessIndex