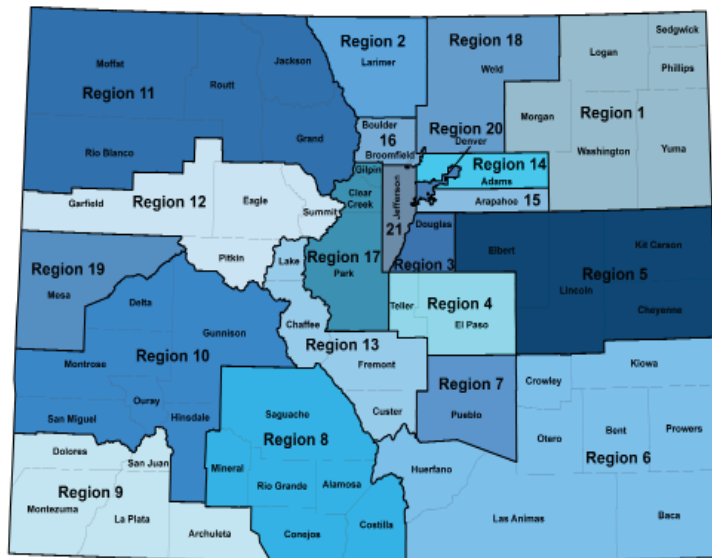


Regional Health Connector Host Organizations

Colorado’s 21 Regional Health Connectors (RHCs) connect the systems that keep us healthy, including primary care, public health, social services, and other community resources.

Each RHC is employed by a host organization that has strong relationships and a history of community-based health work in its region. Working within a host organization allows the RHC to be engaged in the local health ecosystem and supported as they develop and implement projects targeting community needs.

There are hosts organization in 21 regions throughout Colorado. Host organizations serve regions ranging in size from one to 8 counties. Some organizations host RHCs for multiple regions.



Region	Host Organization
1	Centennial Area Health Education Center
2	Health District of Northern Larimer County
3	Tri-County Health Department
4	Community Health Partnership
5	Centennial Area Health Education Center
6	Otero County Health Department
7	Pueblo City-County Health Department
8	San Luis Valley Behavioral Health Group
9	Southwestern Colorado Area Health Education Center
10	Tri-County Health Network
11	Northwest Colorado Community Health Partnership

Region	Host Organization
12	West Mountain Regional Health Alliance
13	Chaffee County Health Coalition
14	Tri-County Health Department
15	Tri-County Health Department
16	City and County of Broomfield Health and Human Services
17	Central Colorado Area Health Education Center
18	North Colorado Health Alliance
19	Mesa County Health Department
20	Mile High Health Alliance
21	Jefferson County Public Health

www.regionalhealthconnectors.org | RHConnectors@coloradohealthinstitute.org

A JOINT PROGRAM BY



The Project described is supported by Funding Opportunity Number CMS-1G1-14-001 from the US Department of Health and Human Services (HHS), Centers for Medicare and Medicaid Services (CMS) and by contract/grant number 1R18HS023904-01 from the Agency for Healthcare Research and Quality (AHRQ), U.S. Department of Health and Human Services (HHS). Opinions expressed in this document are those of the authors and do not reflect the official position of AHRQ, CMS, or HHS.

Regional Health Connectors and Practice Transformation

Colorado’s Regional Health Connectors are a new, cross-sector workforce focused on improving health in Colorado. RHCs connect the systems that keep us healthy, including primary care, public health, social services, and other community resources.

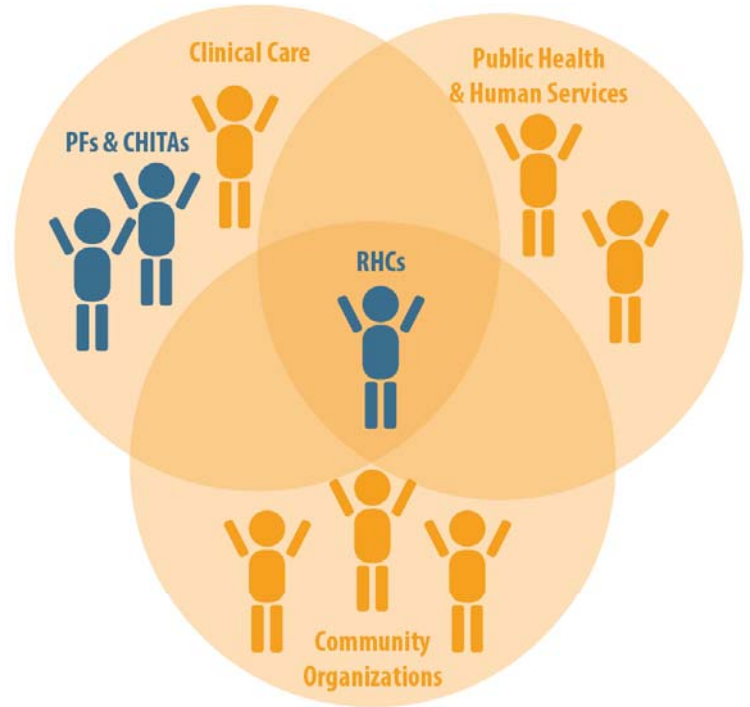
RHCs support providers and their patients by connecting practices with resources to improve health, such as community tobacco cessation groups, chronic disease management programs, school-based health services, and mental health response trainings.

The RHC role from a practice perspective

RHCs are one of several specialized workforces that support practices participating in transformation.

RHCs work along side practice facilitators (PFs or coaches), who are quality improvement coaches for practices, and clinical health information technology advisors (CHITAs), who focus on data practices. Both PFs and CHITAs are employees of practice transformation organizations. RHCs work for local organizations with strong connections in the community.

RHCs, PFs, and CHITAs work together to determine how and when RHCs can support practices’ improvement plans.



Regional Health Connectors (RHCs) A Trusted Local Convener	Practice Facilitators Quality Improvement Coach Support	Clinical Health Information Technology Advisors (CHITAs) Technical and Data Process Support
<ul style="list-style-type: none"> • Link practices to health care and social determinants of health resources in their communities and across the state. • Listen for needs and opportunities. • Strengthen community capacity to address local health priorities. • Develop relationships among providers, community partners, and local health systems. 	<ul style="list-style-type: none"> • Develop practice leaders who support a culture of improvement. • Establish effective quality improvement teams. • Identify and solve problems. • Link practices to transformation resources. 	<ul style="list-style-type: none"> • Support practice data capacity. • Analyze and identify ways to improve practice data systems. • Optimize workflows for data collection, reporting and analysis.

How RHCs connects practices and communities

Practices are interested in being connected all of the health resources available to their community. RHCs support connections between practices and various community resources. Each RHC's work is different because each RHC is addressing the unique challenges facing their community.

A few early examples of the RHCs' work with practices:



In Broomfield, RHC Alison Harvey

worked with a health provider who had trouble identifying behavioral health services to refer patients to. Alison has helped connect the provider with a Community Mental Health Center that is now co-located with the provider and with other classes and resources related to behavioral health.

...

Near Greeley, RHC Jeff Appleman

connected primary care providers with Communities That Care, a group focused on reducing youth violence and substance use. That connection led the primary care providers to connect with local schools in order to help students get health screenings and help schools understand students' medications.

...



In Denver, RHC Stephanie Salazar Rodriguez

coordinated with Porter Adventist Hospital to arrange an expo in Southwest Denver where more than 300 health screenings were conducted and more than 2,000 pounds of fresh fruit and vegetables were distributed.



To get in touch with your region's RHC, visit our website:

www.regionalhealthconnectors.org | RHConnectors@coloradohealthinstitute.org

A JOINT PROGRAM BY

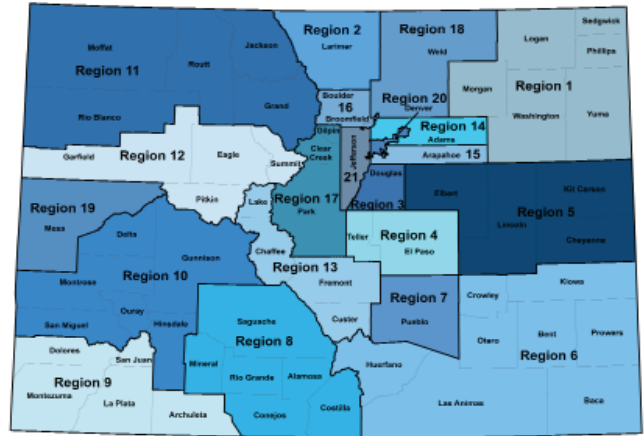


The Project described is supported by Funding Opportunity Number CMS -1G1-14-001 from the US Department of Health and Human Services (HHS), Centers for Medicare and Medicaid Services (CMS) and by contract/grant number 1R18HS023904-01 from the Agency for Healthcare Research and Quality (AHRQ), U.S. Department of Health and Human Services (HHS). Opinions expressed in this document are those of the authors and do not reflect the official position of AHRQ, CMS, or HHS.

Regional Health Connector Projects

Regional Health Connectors (RHCs) connect the systems that keep us healthy, including primary care, public health, social services, and other community resources. RHCs work on three community-identified projects focused on cardiovascular health, behavioral health, and other community health needs and priorities. Contact your RHC for more information.

At right: The RHC regions.



Region 1

Logan, Morgan, Phillips, Sedgwick, Washington, and Yuma Counties

RHC: Jeff Appleman

Host: Centennial Area Health Education Center

Contact: jappleman@cahec.org

1. Convene partners from across Northeast Colorado to create consistent messaging that promotes healthy eating and active living.
2. Develop an action plan to reduce youth alcohol and drug use with the involvement of youth and providers.
3. Create locally-relevant outreach materials and coordinate trainings for providers to reduce stigma towards depression.

Region 2

Larimer County

RHC: Jane Gerberding

Host: Health District of Northern Larimer County

Contact: jgerberding@healthdistrict.org

1. Provide tools and processes for quick, effective referrals to tobacco cessation services for youth.
2. Develop a formal referral process for providers to improve communication and connections to behavioral health assessment and treatment.
3. Identify needs and opportunities for providers to identify substance use disorders and refer patients to resources.

Region 3

Douglas County

RHC: Laura Don

Host: Tri-County Health Department

Contact: ldon@trailhead.institute

1. Create a tool doctors' offices can use to improve referrals from providers to community-based healthy eating, active living, and cardiovascular health resources.
2. Identify provider needs, support workgroups, and create shared messaging with the Tri-County Overdose Prevention Partnership to improve coordination among behavioral health and primary care stakeholders.
3. Build a free medical clinic in a food pantry with co-located enrollment specialists to improve access to healthcare and social services for the underserved population in Douglas County.

Region 4

El Paso and Teller Counties

RHC: Darlyn Miller

Host: Community Health Partnership

Contact: darlyn.miller@ppchp.org

1. Increase coordination of healthy eating and active living resources for individuals, families, and communities dealing with obesity and food insecurity in El Paso and Teller Counties.
2. Implement screening tools and education about opioids, alcohol, and other substances in primary care practices, government agencies, and community organizations.
3. Formalize communication and partnerships to simplify access and referrals to behavioral health treatment and social determinants of health resources.

Region 5

Elbert, Lincoln, Kit Carson, and Cheyenne Counties

RHC: Kim Fairley

Host: Centennial Area Health Education Center

Contact: kfairley@cahec.org

1. Connect primary care and dental providers to local public health and public information campaigns to stop tobacco use.
2. Create locally-relevant messaging about mental health by facilitating dialogue between primary care and behavioral health providers.
3. Engage community members and providers in selecting strategies for a region-wide obesity prevention effort.

Region 6

Baca, Bent, Crowley, Huerfano, Kiowa, Las Animas, Otero, and Prowers Counties

RHC: Cassie Rogers

Host: Otero County Health Department

Contact: rhc@otegov.org

1. Identify champions in each county of Region 6 to lead locally-tailored strategies to increase healthy eating and active living opportunities.
2. Formalize multi-stakeholder partnerships to improve referral systems for behavioral health treatment services.
3. Create and facilitate a region-wide coalition to talk about substance use and share resources.

Region 7

Pueblo County

RHC: Lexie Ellis

Host: Pueblo City-County Health Department

Contact: alexis.ellis@pueblocounty.us

1. Partner with the community revitalization group to improve walkability, bike-ability, safety, and healthy food access in the Bessemer, Eilers, and Grove neighborhoods.
2. Provide Mental Health First Aid Training classes to members of the community and providers
3. Facilitate a coalition of those working to address opioid misuse and improve collaboration by identifying assets and gaps for partners.

Region 8

Alamosa, Conejos, Costilla, Mineral, Rio Grande, and Saguache Counties

RHC: Dee Kessler

Host: San Luis Valley Behavioral Health Group

Contact: deek@slvbhg.org

1. Create a shared website of resources for health and social service providers in Region 8 with a focus on transportation access.
2. Implement locally specific ad campaigns and improve coordination for better access to mental health care.
3. Plan community and professional forums to educate the public on substance abuse across the spectrum of prevention, treatment, and recovery.

Region 9

Archuleta, Dolores, La Plata, Montezuma, and San Juan Counties

RHC: Mary Dengler-Frey

Host: Southwestern Colorado Area Health Education Center

Contact: mary.frey@swcahec.org

1. Implement provider trainings and public messaging campaigns for diabetes prevention and management among Tribal communities.
2. Coordinate community forums and trainings, provider education, and a media campaign to reduce youth suicide in Montezuma and Dolores counties.
3. Engage providers in efforts to reduce opioid misuse such as stigma reduction campaigns, increased use of monitoring programs, and participation in trainings.

Region 10

Delta, Gunnison, Hinsdale, Montrose, Ouray, and San Miguel Counties

RHC: Jess Mahanes

Host: Tri-County Health Network

Contact: rhc@tchnetwork.org

1. Create "food prescriptions" for clinics to provide low-income individuals and families with increased access to healthy food and promote food security.
2. Implement telehealth counseling services at Hinsdale County's school and clinic.
3. Coordinate the pilot test of a transportation program to provide on-demand rides to the doctor for residents in San Miguel, Montrose, and Gunnison counties.

Region 11

Grand, Jackson, Moffat, Rio Blanco, and Routt Counties

RHC: Stephanie Monahan

Host: Northwest Colorado Community Health Partnership

Contact: smonahan@nchealthpartnership.org

1. Implement the “Blue Zones framework,” a program that works with community leaders to change to the built environment to make individual choices easier.
2. Launch a “Community Care Team Network” in each county to better understand and coordinate local services and resources.
3. Provide information and resources about mental health services at local community venues such as farmers markets and community gardens.

Region 12

Eagle, Garfield, Pitkin, and Summit Counties

RHC: Namrata Shrestha

Host: West Mountain Regional Health Alliance

Contact: nshrestha@mountainfamily.org

1. Create a care coordination system after identifying local assets and gaps.
2. Support a collaborative regional effort to implement the Zero Suicide Initiative Systems Approach.
3. Coordinate regional efforts to address social determinants of health using the Thriving Colorado Dashboard.

Region 13

Chaffee, Custer, Fremont, and Lake Counties

RHC: Mike Orrill

Host: Chaffee County Public Health Department

Contact: morrill@chaffeecounty.org

1. Increase access to healthy eating and active living resources by creating a regional diabetes roundtable and coordinating with Weigh N Win programs.
2. Provide resources of support, education, and advocacy to LGBTQ individuals, their families, and the wider community.
3. Create the first region-wide coalition addressing opioid misuse, then host regional education events for community members and providers.

Region 14

Adams County

RHC: Meghan Prentiss

Host: Tri-County Health Department

Contact: mprentiss@tchd.org

1. Develop an engagement strategy to share cardiovascular disease resources with primary care providers throughout the Denver metropolitan region.
2. Facilitate the Tri-County Overdose Prevention Program Provider Education Workgroup with the goal of increasing screening rates for mental health and substance use.
3. Improve access to care by developing policies for reliable transportation to medical appointments, and by providing health and social services at local events.

Region 15

Arapahoe County

RHC: Kaitlin Wolff

Host: Tri-County Health Department

Contact: kwolff@tchd.org

1. Ensure residents of Arapahoe County have access to navigators to assist with insurance applications and to understand the benefits and value of primary care.
2. Catalog and connect community efforts that are improving the integration of refugees and immigrants.
3. Provide a space for partners to combine resources and expertise to seek solutions to factors affecting health, with a focus on housing.

Region 16

Boulder and Broomfield

RHC: Alison Harvey

Host: City and County of Broomfield Health and Human Services

Contact: aharvey@broomfield.org

1. Strengthen connections between primary care, public health, and social services in Broomfield County through direct outreach, shared strategies, and innovative collaborations.
2. Convene existing groups of behavioral health and social services stakeholders to identify and prioritize potential solutions for easier access to services.
3. Support the facilitation of the Boulder County Opioid Advisory Group to address prescription drug misuse.

Region 17

Park, Clear Creek, and Gilpin Counties

RHC: Ashley Hill

Host: Central Colorado Area Health Education Center

Contact: ashley@centralcoahec.org

1. Build a clinic in Clear Creek County and implement a health service district in Park County to ensure sustainable access to primary care and behavioral health for all Region 17 residents.
2. Expand access and knowledge of mental health resources by engaging the community in Mental Health First Aid trainings.
3. Establish two permanent medication disposal drop box sites and share Take Meds Seriously campaign material to educate the community about substance abuse.

Region 18

Weld County

RHC: Tanya Trujillo-Martinez

Host: North Colorado Health Alliance

Contact: ttrujillo.alliance@nocoha.org

1. Produce education materials about healthy eating and active living, and disseminate 2,400 messages through primary care clinics and community organizations.
2. Identify and engage clinics in providing more mental health services, including telehealth.
3. Develop a community garden that will increase access to fresh produce and foster a sense of participation, inclusion, and accomplishment in the Greeley community.

Region 19

Mesa County

RHC: Sarah Robinson

Host: Mesa County Health Department

Contact: Sarah.robinson@mesacounty.us

1. Engage new partners and cultivate existing relationships to promote the impacts of outdoor activity on physical, behavioral, and community health.
2. Streamline and standardize tools, trainings, systems, and processes for child care providers to thrive, grow and become profitable.
3. Facilitate the creation and implementation of a robust, practical database that allows medical and community service providers to share referrals and patient information.

Region 20

Denver

RHC: Stephanie Salazar-Rodriguez

Host: Mile High Health Alliance

Contact: stephanie@milehighhealthalliance.org

1. Promote social determinants of health screenings in clinics, distribute blood pressure management resources to practices and community partners.
2. Connect practices to trainings and resources for substance abuse disorders.
3. Support partners in the implementation of stigma reduction campaigns, Mental Health First Aid training, and other community resources.

Region 21

Jefferson County

RHC: Cynthia Farrar

Host: Jefferson County Public Health

Contact: cfarrar@co.jefferson.co.us

1. Align cardiovascular disease prevention resources for the 40+ population and create a coordinated outreach and engagement strategy to partners and providers.
2. Coordinate provider education opportunities related to substance use disorders and behavioral health treatment.
3. Convene partners to identify and address gaps in health care and social services in rural Jefferson County.

www.regionalhealthconnectors.org

RHConnectors@coloradohealthinstitute.org

A JOINT PROGRAM BY



The Project described is supported by Funding Opportunity Number CMS-1G1-14-001 from the US Department of Health and Human Services (HHS), Centers for Medicare and Medicaid Services (CMS) and by contract/grant number 1R18HS023904-01 from the Agency for Healthcare Research and Quality (AHRQ), U.S. Department of Health and Human Services (HHS). Opinions expressed in this document are those of the authors and do not reflect the official position of AHRQ, CMS, or HHS.