

Metro Denver Social-Health Information Exchange

Integrative Governance Structure

JULY 2022



COLORADO HEALTH INSTITUTE

Informing Strategy. Advancing Health.

Background

The circumstances of a person's life affect their health much more than the medical care they receive. But the systems that support people's health, social, and economic needs are usually disconnected.

That's where social-health information exchange (S-HIE) comes in. The Metro Denver Partnership for Health S-HIE initiative is working to raise up an interoperable S-HIE ecosystem that harnesses technological tools and community relationships to provide whole-person and whole-family care.

What is an interoperable Social-Health Information Exchange (S-HIE) ecosystem?

An interoperable S-HIE ecosystem is a comprehensive community of care that supports individuals and families. A S-HIE ecosystem creates connections and strengthens coordination among health, human, and community-based service providers to offer more holistic, customized care for people.

About the Metro Denver S-HIE initiative

Members of the Metro Denver S-HIE initiative include public health agencies, health systems and hospitals, community-based organizations, community members, human service agencies, Regional Accountable Entities, and technical organizations. The Colorado Health Institute convenes and facilitates the initiative.

The mission, vision, values, and guiding principles of the Metro Denver S-HIE initiative are as follows:

Mission

We collaborate and align technology, connecting community resources and the people they serve.

Vision

Individual social and health needs are met to promote equity and improved health outcomes in our communities.

Values

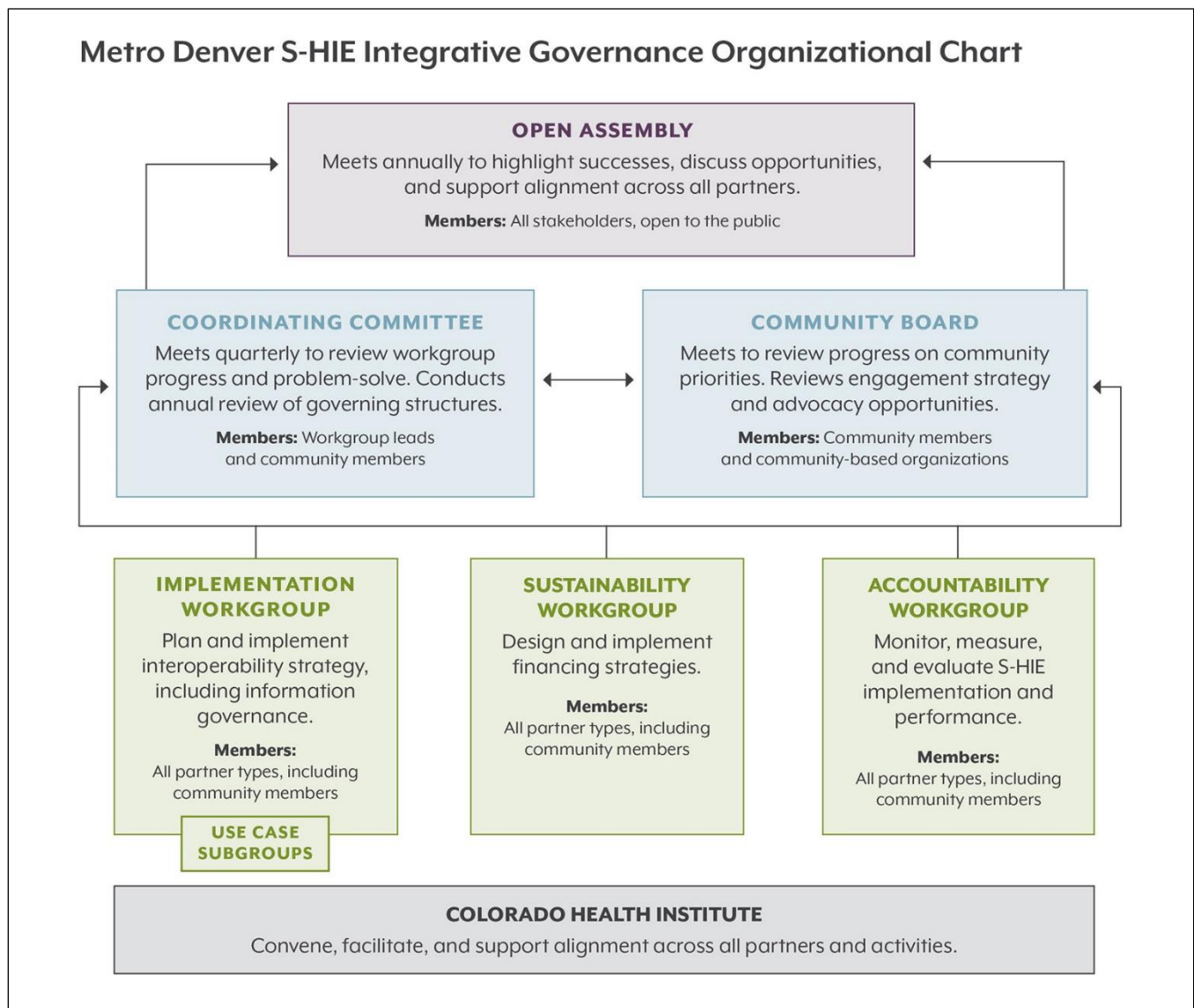
Trustworthy, Respectful, Equitable, and Inclusive

Guiding Principles

Connective, Scalable, Person-Centric, Holistic, and Secure

Putting Mission into Action

The Metro Denver S-HIE initiative adopted an integrative governance structure that allows for all partners to share in decision-making, responsibilities, and activities to advance the development, implementation, and sustainability of interoperable S-HIE. Partners used the national [ReThink Health integrative activities](#) as a model when developing their local governance structure. This document outlines the Metro Denver S-HIE governance structure organizational chart, the purpose and responsibilities, and membership of each group.



Purpose, Responsibilities, and Membership

Each group has a purpose and responsibility as a part of the larger integrative governance structure. Partners participate based on where they can best leverage and contribute their knowledge, skills, and expertise in service to the overall initiative.

Annual Convening

Purpose: The purpose of the annual convening is to highlight shared successes, discuss collective opportunities, and support alignment across all partners.

Responsibilities: The Colorado Health Institute is responsible for organizing and hosting the annual convening. The other metro Denver partners are responsible for informing the agenda, actively engaging during the event, and inviting to the table other partners and organizations that are interested in advancing interoperable S-HIE.

Membership: The annual convening includes existing metro Denver S-HIE partners. Other individuals and organizations interested in learning more about or getting involved in the initiative are also welcome.

Coordinating Committee

Purpose: The purpose of the coordinating committee is to review workgroup progress, coordinate workgroup activities, and problem-solve to ensure the success of governance structures and implementation.

Responsibilities: The committee's members are responsible for annually reviewing governance structures, ensuring their organizations' engagement in the overall initiative, and supporting cohesiveness and alignment across all workgroups and the community board.

Membership: The coordinating committee comprises the lead partners (chairs) from each workgroup and the community board.

Community Board

Purpose: The purpose of the board is to empower community leadership in cross-sector systems change by ensuring community priorities direct the work of the Metro Denver S-HIE initiative.

Responsibilities: The responsibility of the board is to guide S-HIE implementation, sustainability, and accountability activities through an equity-driven lens. The board is

responsible for reviewing the initiative's community engagement strategy and advocacy opportunities to ensure progress on community priorities.

Membership: The board comprises individual community members and representatives from community-based organizations in the metro area. Local area health alliances serve as lead partners to organize and facilitate board activities with the Colorado Health Institute.

Implementation Workgroup

Purpose: The purpose of the implementation workgroup is to plan and implement interoperability strategy, including information governance, to support the development of the S-HIE ecosystem.

Responsibilities: The implementation workgroup is responsible for guiding the development of business requirements, functional and interoperability requirements, and technical approach for S-HIE use cases in the service of designing an interoperable ecosystem that supports all S-HIE activities.

Membership: The workgroup comprises all partner types, and the proposed leads of the workgroup are a health system and a community-based organization.

Sustainability Workgroup

Purpose: The purpose of the sustainability workgroup is to design and implement shared financing strategies to maintain the initiative.

Responsibilities: The workgroup is responsible for evaluating and securing financial models and resources to sustain integrative governance activities, development, and implementation of the S-HIE ecosystem.

Membership: The workgroup comprises all partner types, and the proposed leads of the workgroup are a health system, a Regional Accountable Entity, and a community-based organization.

Accountability Workgroup

Purpose: The purpose of the accountability workgroup is to monitor, measure, and evaluate S-HIE implementation and performance.

Responsibilities: The workgroup is responsible for developing and implementing an equity-driven evaluation plan to guide continuous partnership and process improvements,

assess outcomes, and ensure community priorities are being addressed through the initiative.

Membership: The workgroup comprises all partner types and the proposed leads of the workgroup are a local public health agency, a Regional Accountable Entity, and a community-based organization.

Colorado Health Institute

Purpose: The Colorado Health Institute serves to convene, facilitate, and support alignment across all partners, workgroups, and activities.

Responsibilities: The Colorado Health Institute is responsible for guiding strategic planning, supporting leadership and partnership development, developing and monitoring work plans, and providing administrative support for the overall initiative.

Appendix A: Workgroup Member Organizations

The following list of organizations represented on each workgroup is current as of June 2022.

Coordinating Committee

- Aurora Health Alliance
- Centura Health
- Colorado Access
- Denver Regional Council of Governments
- Kaiser Permanente Colorado

Community Board

- Community members living in Adams, Arapahoe, Boulder, Broomfield, Douglas, Denver, and Jefferson counties
- Aurora Health Alliance
- Colorado Coalition for the Homeless
- One Colorado
- Tri-County Health Department

Implementation Workgroup

- Boulder County Department of Housing & Human Services
- Boulder County Public Health
- Centura Health
- Children's Hospital Colorado
- Colorado Access

- Colorado Community Managed Care Network
- CORHIO (a Contexture organization)
- Denver Health
- Denver Human Services
- Family Resource Center Association
- HealthONE
- Jefferson Center
- Kaiser Permanente Colorado
- Mile High United Way 2-1-1
- National Jewish Health
- Intermountain Healthcare (formerly SCL Health)
- UCHealth

Sustainability Workgroup

- Centura Health
- Colorado Access
- Colorado Community Health Alliance
- Denver Health
- Denver Regional Council of Governments
- HealthONE
- Kaiser Permanente
- WellPower (formerly Mental Health Center of Denver)
- Intermountain Healthcare (formerly SCL Health)

Accountability Workgroup

- Boulder County Department of Housing & Human Services
- Colorado Access
- Colorado Community Health Alliance
- Douglas County Co-Responder Program
- Family Resource Center Association
- Healthy Jeffco Alliance/Jefferson County Public Health
- Public Health Institute at Denver Health
- Tri-County Health Department