



METRO DENVER

PARTNERSHIP FOR HEALTH

Welcome and Orientation

Summer 2022



Agenda

12:00–12:20 p.m.

Overview of Metro Denver Partnership for Health (MDPH)'s history, structure, and goals

12:20–12:40 p.m.

MDPH workgroups, activities, and expectations

12:40–12:50 p.m.

Question-and-answer session



About MDPH



METRO DENVER
PARTNERSHIP FOR HEALTH

MDPH Members

Boulder County Public Health

Broomfield County Public Health and Environment

Colorado Access

Colorado Community Health Alliance

Centura Health

Children's Hospital Colorado

Denver Department of Public Health and Environment

Denver Health/Public Health Institute at Denver Health

HealthONE

Intermountain Healthcare (SCL Health)

Jefferson County Public Health

Kaiser Permanente Colorado

National Jewish Health

Tri-County Health Department (Adams/Arapahoe counties)

UCHealth

MDPH Overview



Vision

Improved health in metro Denver through regional collaboration



Mission

We build partnerships between our agencies and across sectors to increase capacity for achieving our vision



MDPH Principles



MDPH Governance Overview

In 2020, MDPH partners created a **multi-sector governance structure** to:

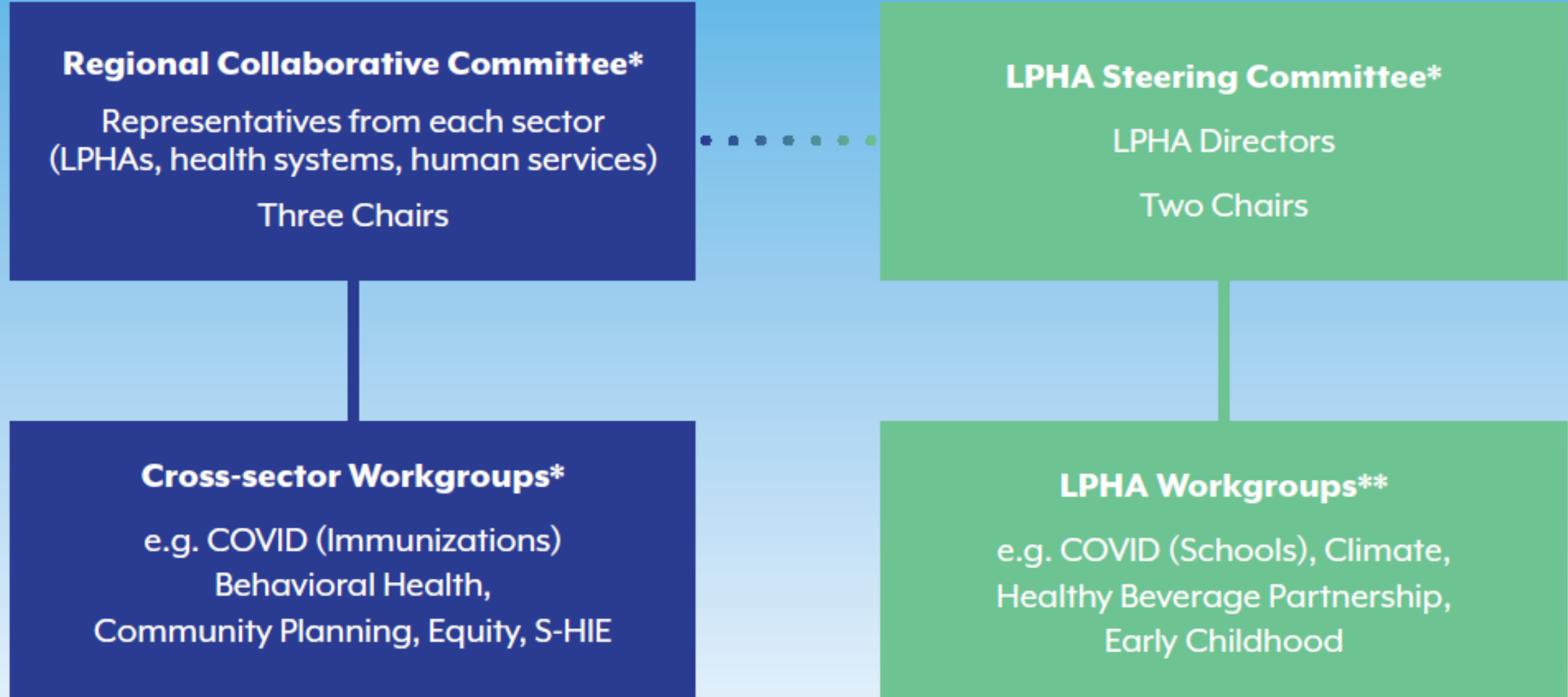
- Foster increased transparency and clarity around roles, responsibilities, and accountability
- Ensure sustainability of a broad collaboration

Governance overview:

- **Backbone organization** structure
- **Committees** provide strategic direction for **workgroups**



Metro Denver Partnership for Health



*CHI is backbone **MDPH subject matter expert partners are backbone

Goals

Clarity in health care
and public health's
collective voice

Improved partnership
and collaboration
among sectors

Increased alignment
in our public health,
assessment, and population-
level implementation plans,
resulting in increased efficiency
and consistency in engaging
with our communities

Reduced burden on
community members and
MDPH stakeholders by
providing a single venue
for public engagement

Pooled resources
and improved
funding reach

Better awareness and
capacity to address
health equity
needs leading to
decreased health
disparities

Increased trust,
respect, and
commitment among
partners in all roles

Improved and
accessible data
at a regional level

**Improved
health
outcomes**



Activities and Expectations



METRO DENVER
PARTNERSHIP FOR HEALTH

MDPH 2022 Workgroups

- Health Equity (HE)
- Immunizations (IZ)
- Behavioral Health (BH)
- Social Health Information Exchange (S-HIE)
- Climate Change
- Early Childhood
- COVID-19
- Healthy Eating Active Living/Healthy Beverage Partnership (HBP)



Workgroup Models

Workgroup Model 1

- Grant funded
- MDPH partners paid to implement program activities
- CHI not participating/ in-kind support
- **HBP**

Workgroup Model 2

- Grant and/or dues funded
- MDPH partners provide in-kind support
- CHI provides staffing
- **HE, S-HIE, BH, IZ, COVID-19**

Workgroup Model 3

- No MDPH-specific funding
- Both MDPH partners and CHI staff provide in-kind support
- **Climate, Early Childhood**



Expectations

- Actively participate in workgroup meetings
- Champion and implement activities identified
- Complete identified action items in a timely manner
- Identify funding opportunities
- Reach out to facilitator or chairs with feedback
- If transitioning off, notify leadership and facilitator





Questions



Nicole Weber

webern@coloradohealthinstitute.org • 720.975.9257

colo.health/MDPH



METRO DENVER
PARTNERSHIP FOR HEALTH