

Livin' La Vida Local

Understanding the Results of Health Reform
in Colorado's Communities



#HIHC15

Jessica Fern and Emily Johnson

December 14, 2015



Three Takeaways

- Colorado's uninsured rate is at a record low. Still, there's wide variation by community – and even by neighborhood.
- But health insurance doesn't always equal access to needed and convenient health care.
- State policies are helping communities to improve insurance coverage and access to care.

Story One:

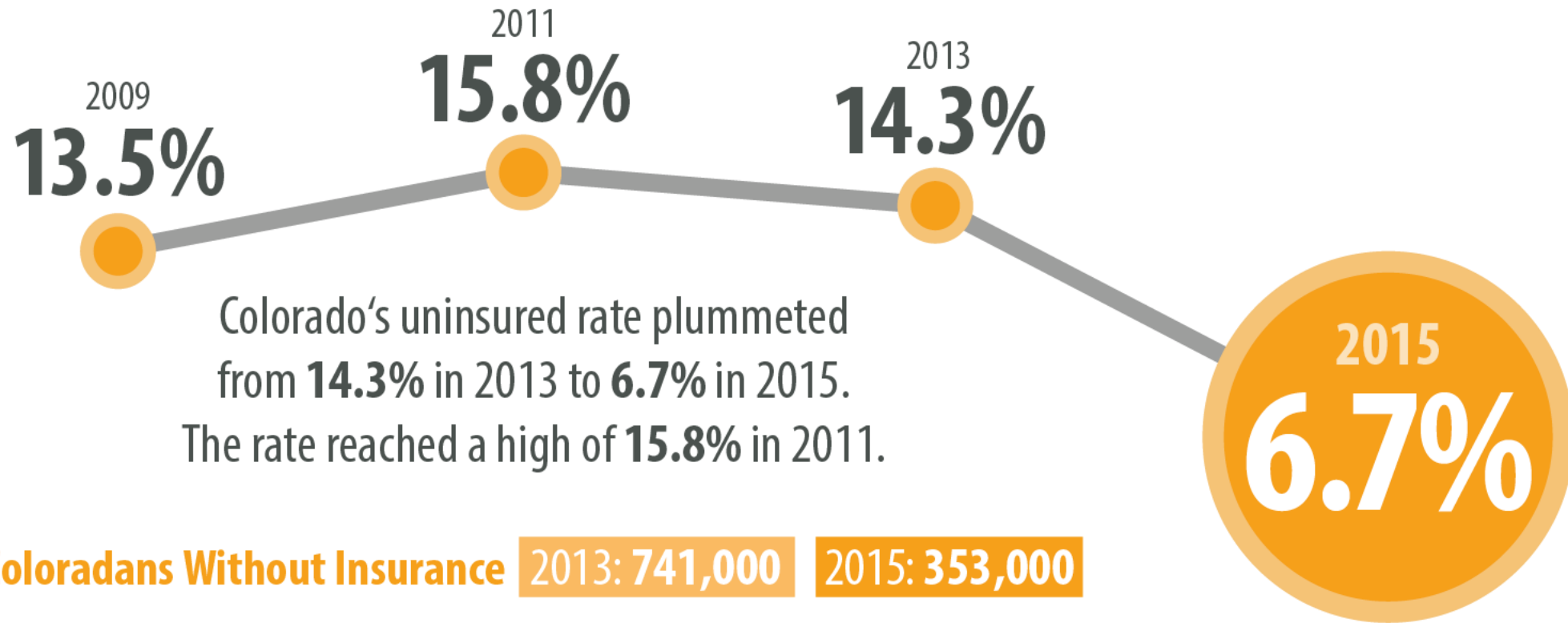
Coverage

Colorado's
uninsured rate has
reached
a record low.



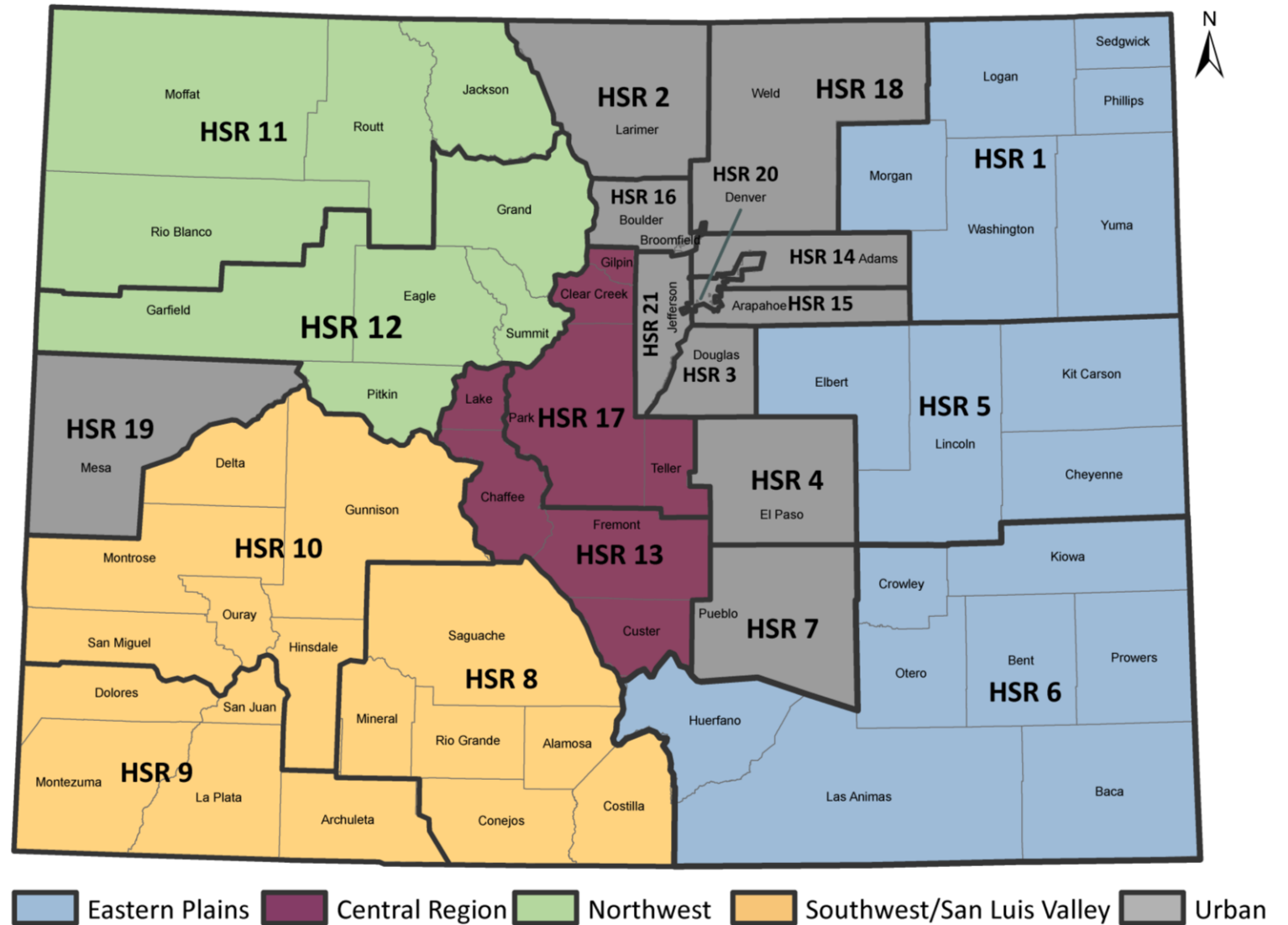
Declining Uninsurance Rates

Colorado's Uninsured Rate: A New Low



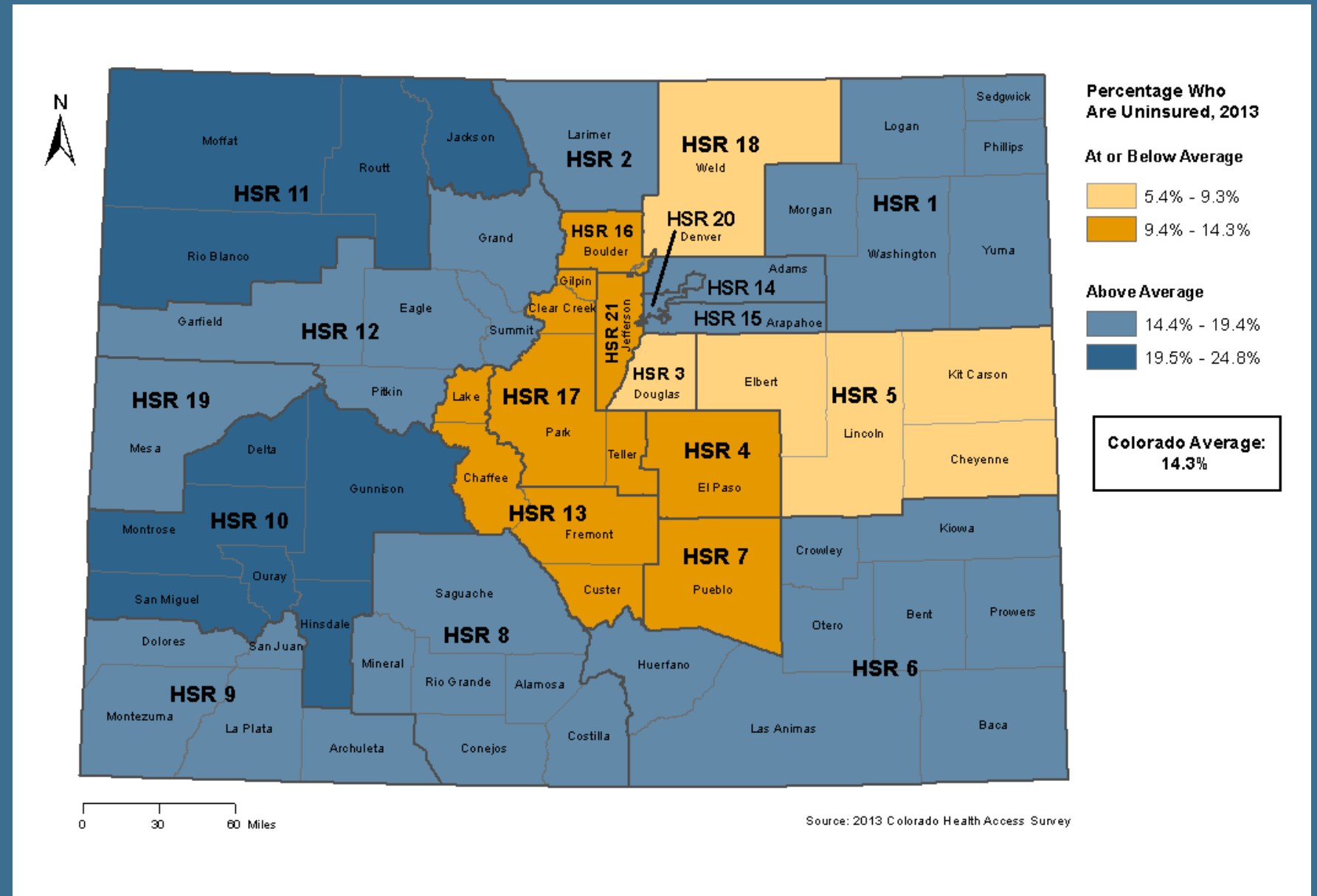
Coverage: The Local Story

Regions of Colorado



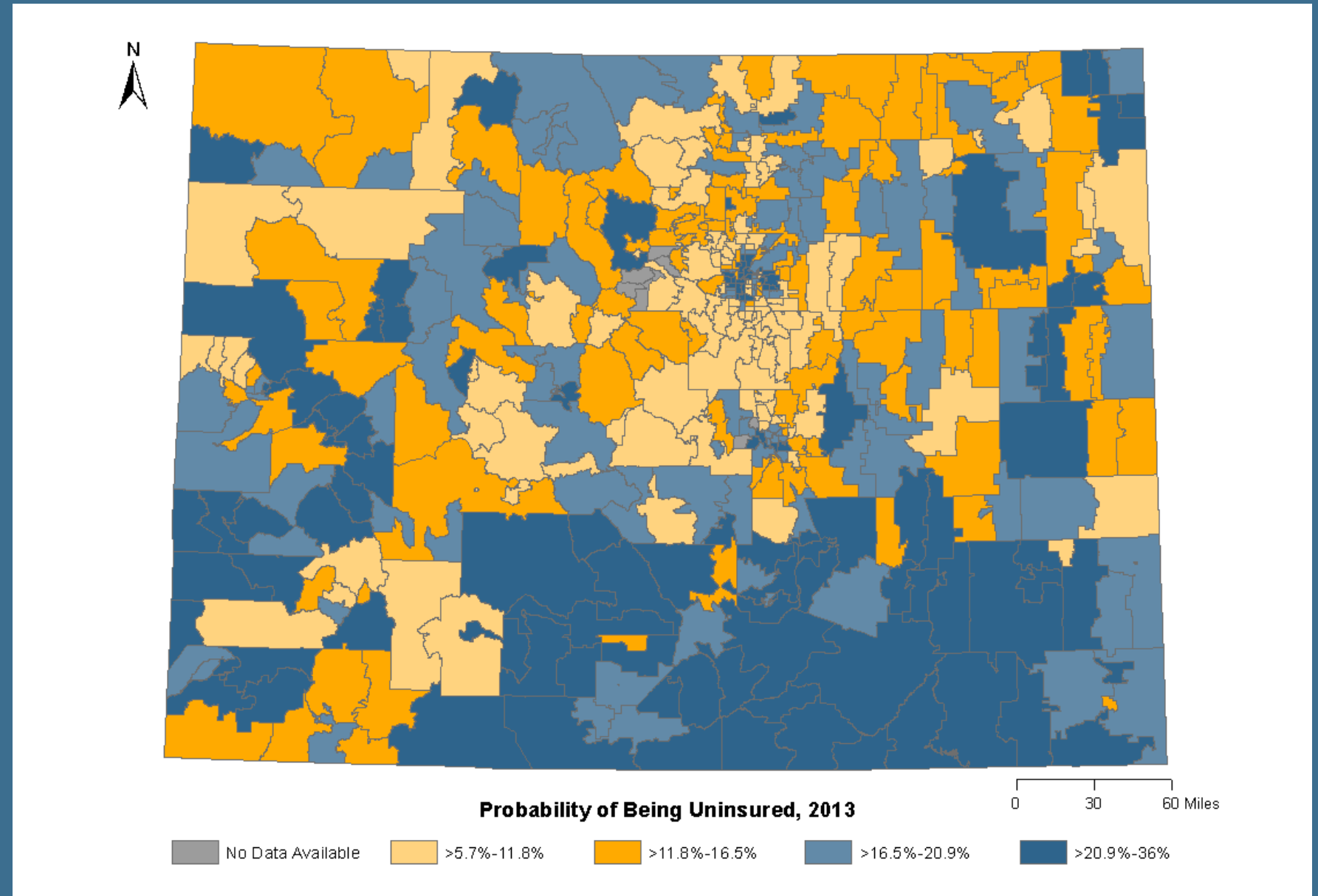
Coverage: The Local Story

Uninsured Rate by Health Statistics Region, Colorado, 2013



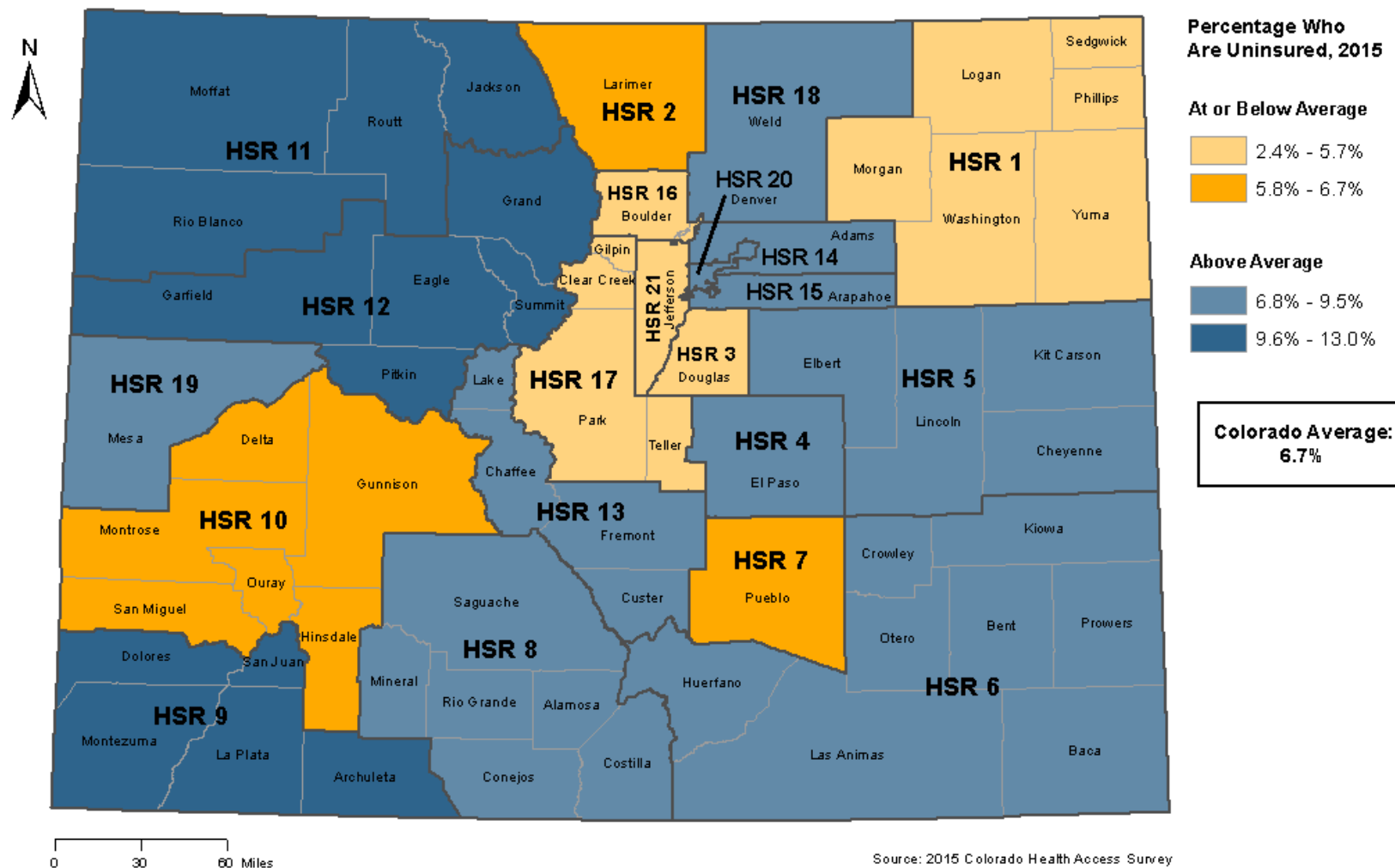
Coverage: The Local Story

Probability of Being
Uninsured by
ZIP Code,
Colorado, 2013



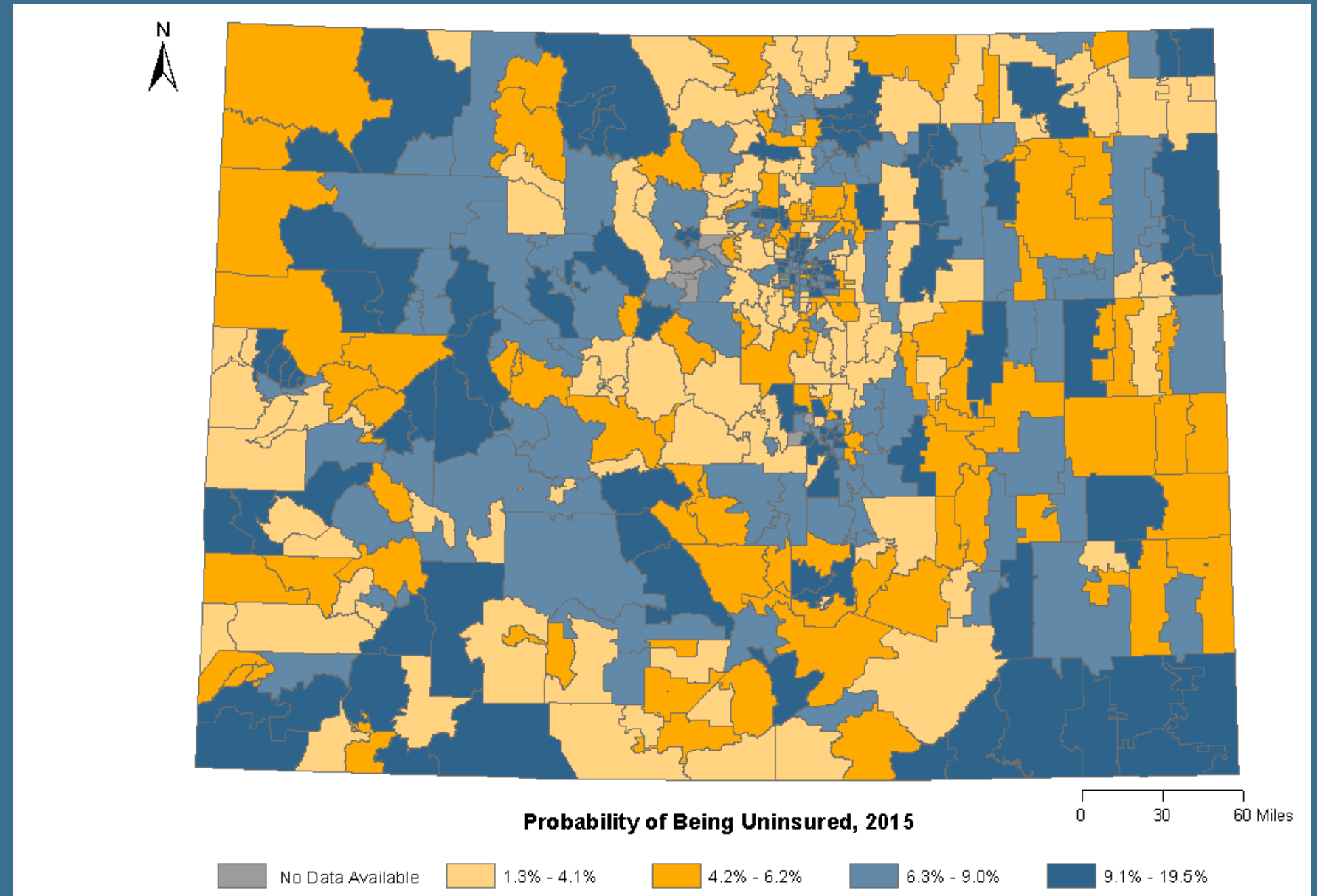
Coverage: The Local Story

Uninsured Rate by Health Statistics Region, Colorado, 2015



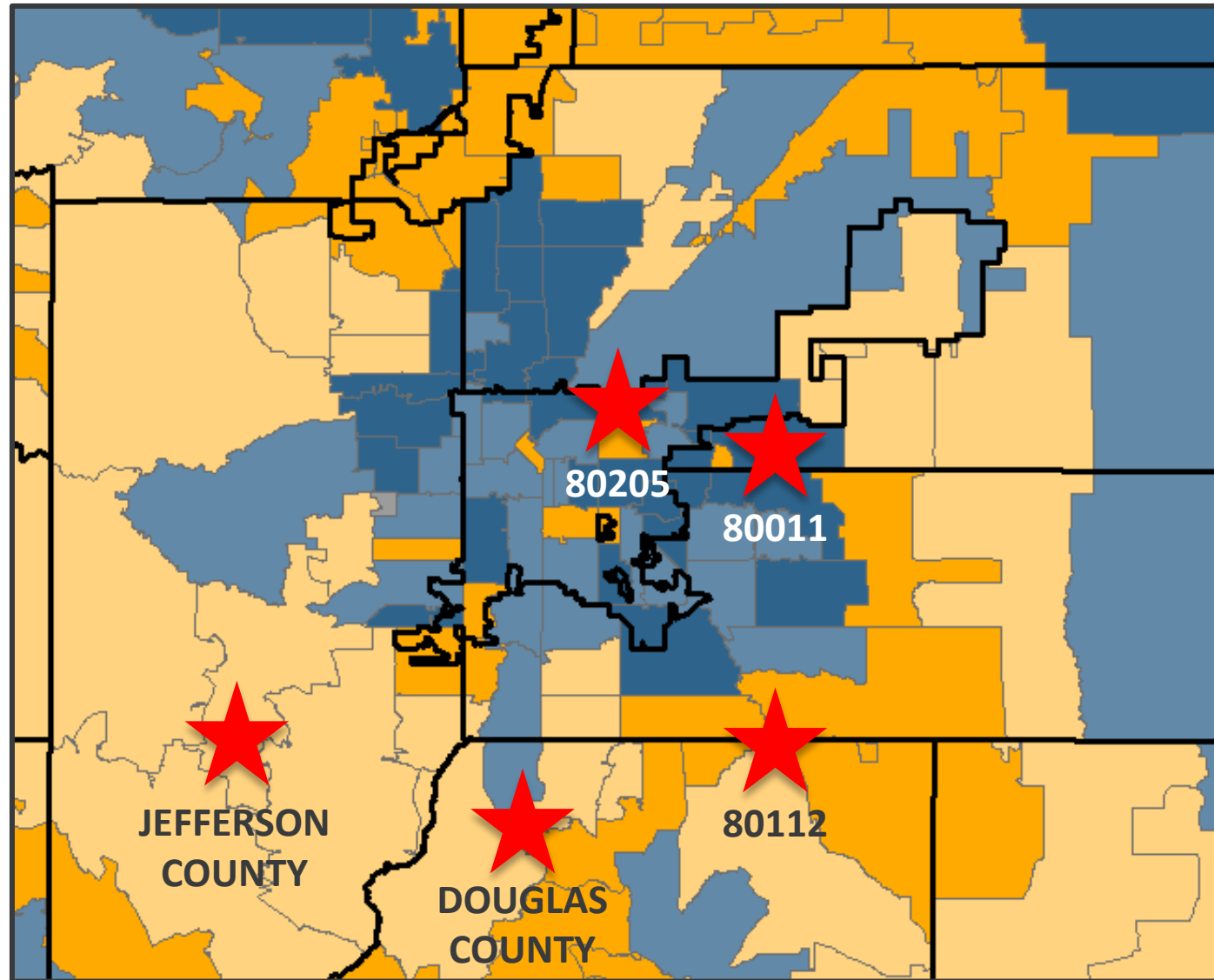
Coverage: The Local Story

Probability of Being
Uninsured by
ZIP Code, Colorado,
2015



Coverage: The Local Story

Probability of
Being Uninsured
by ZIP Code,
Denver, 2015



Story Two:

Access to Health Care

Access to care looks different across Colorado – and is slow to change.



COLORADO ACCESS TO CARE INDEX Colorado Statewide

Overall Index Score
7.7
Out of 10

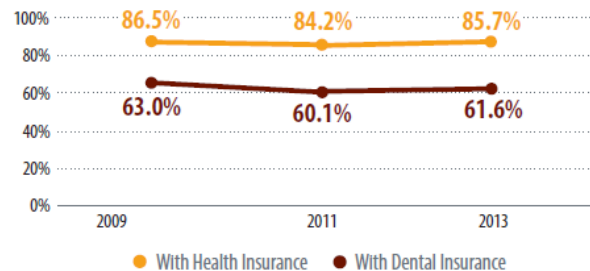


Potential Access

Index Score **7.4**

Adequate insurance coverage and enough local care providers make it more likely that people will get care when they need it.

With Insurance, 2009-2013



Health Care Workforce *Per 1,000 Residents



Underinsured Coloradans

Percentage of Population

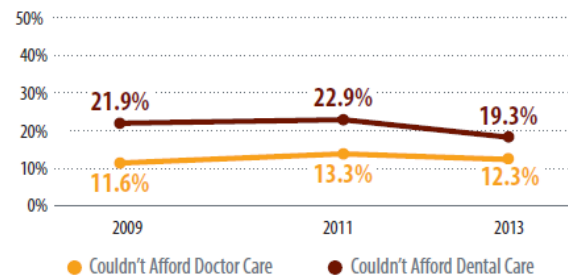


Barriers to Care

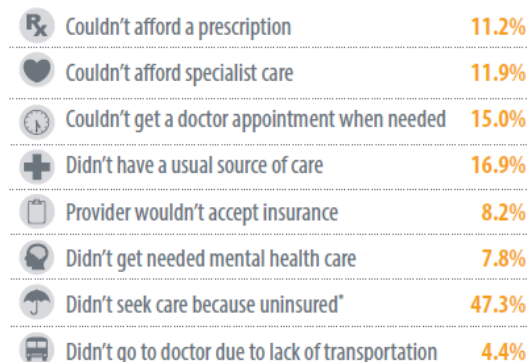
Index Score **8.9**

But many obstacles make it hard for people to get health care – even if they have insurance.

Couldn't Afford Medical or Dental Care in Past 12 Months, 2009-2013



In Past 12 Months ...



*Only includes those who were uninsured at some point in the past 12 months.

Realized Access

Index Score **6.8**

When people obtain preventive services, it's a good indication they have access to care. But hospitalizations or emergency room visits may indicate inadequate access.

Preventive Care

Well-child visits in the past year for those under 19 years

2009 2011 2013
74.2% 72.3% 72.4%

Received prenatal care as soon as wanted **82.9%**

Pap test in the past three years for women aged 18+ **78.8%**

Mammogram in the past two years for women aged 50+ **71.9%**

Colonoscopy or sigmoidoscopy at any time for people aged 50+ **66.8%**

Visited a dentist or dental hygienist in past year, all ages

2009 2011 2013
66.4% 63.5% 65.2%

Avoidable Care

Of those who went to the ER, went for a condition that could have been treated by a regular doctor

41.1%

Hospitalized for uncontrolled diabetes, adults aged 18+
RATE PER 100,000

3.6

Hospitalized for asthma, adults aged 18-39
RATE PER 100,000

28.1

Updated March 2015 • Data source details available at ColoradoHealthInstitute.org/COAccessIndex

COLORADO ACCESS TO CARE INDEX Colorado Statewide 2015

Overall
Index Score
7.8
Out of 10

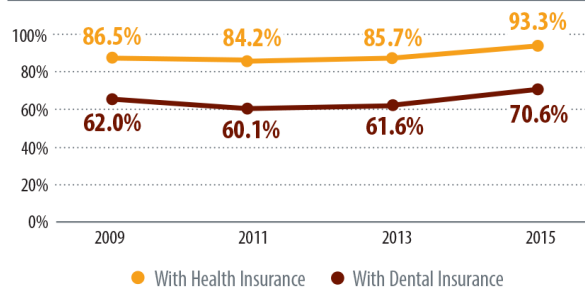
colorado health
INSTITUTE
Colorado Coalition for the
Medically Underserved

Potential Access

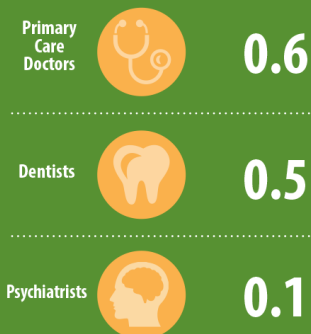
Index Score **7.8**

Adequate insurance coverage and enough local care providers make it more likely that people will get care when they need it.

With Insurance, 2009-2015



Health Care Workforce *Per 1,000 Residents 2013 Data



Underinsured Coloradans

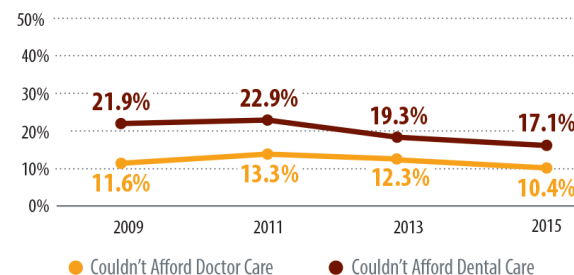


Barriers to Care

Index Score **8.8**

But many obstacles make it hard for people to get health care – even if they have insurance.

Couldn't Afford Medical or Dental Care in Past 12 Months, 2009-2015



In Past 12 Months ...



*Only includes those who were uninsured at some point in the past 12 months.

Realized Access

Index Score **6.9**

When people obtain preventive services, it's a good indication they have access to care. But hospitalizations or emergency room visits may indicate inadequate access.

Preventive Care

Well-child visits in the past year for those under 19 years

2011 2013 2015
72.3% 72.4% 75.9%

Received prenatal care in first trimester **87.2%**

Pap test in the past three years for women aged 18+ **77.0%**

Mammogram in the past two years for women aged 50+ **72.4%**

Colonoscopy or sigmoidoscopy at any time for people aged 50+ **69.3%**

Visited a dentist or dental hygienist in past year, all ages

2011 2013 2015
63.5% 65.3% 68.3%

Avoidable Care

Of those who went to the ER, went for a condition that could have been treated by a regular doctor

40.2%

Hospitalized for uncontrolled diabetes, adults aged 18+

RATE PER 100,000

3.6*

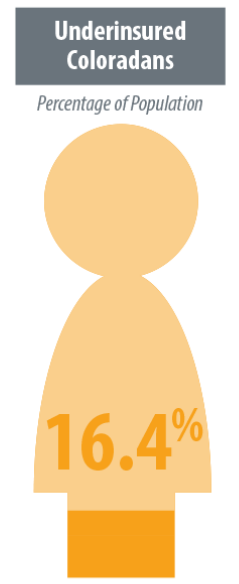
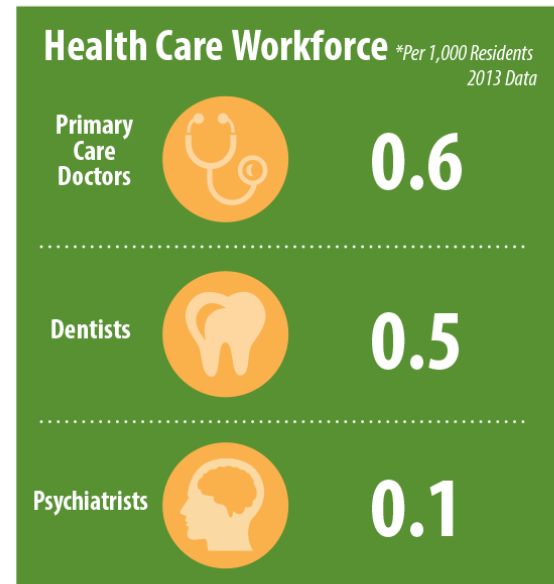
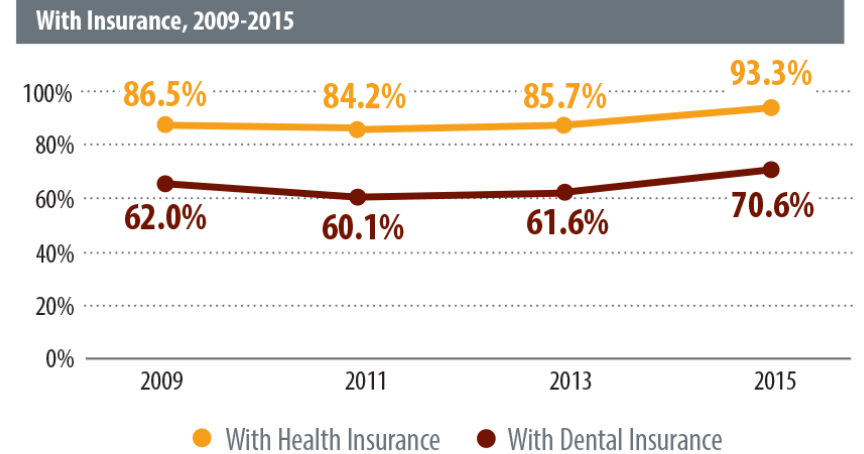
Hospitalized for asthma, adults aged 18-39

RATE PER 100,000

28.1*

Updated December 2015 • Data source details available at ColoradoHealthInstitute.org/COAccessIndex • *2013 data

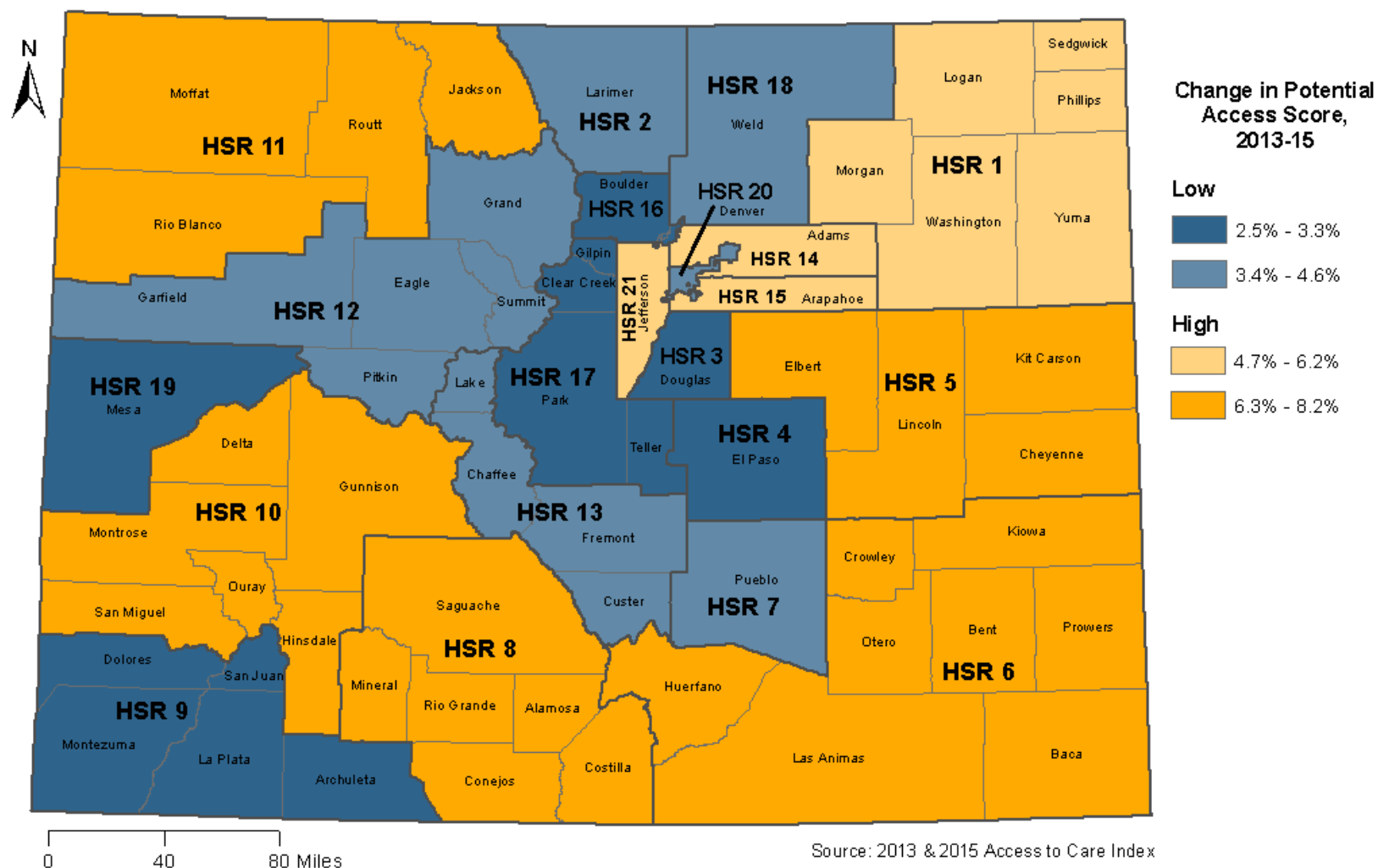
Potential Access

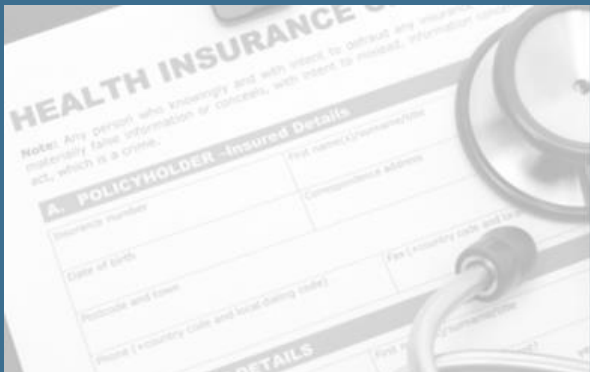


Potential Access: Colorado's Score

2013	2015
7.4	7.8

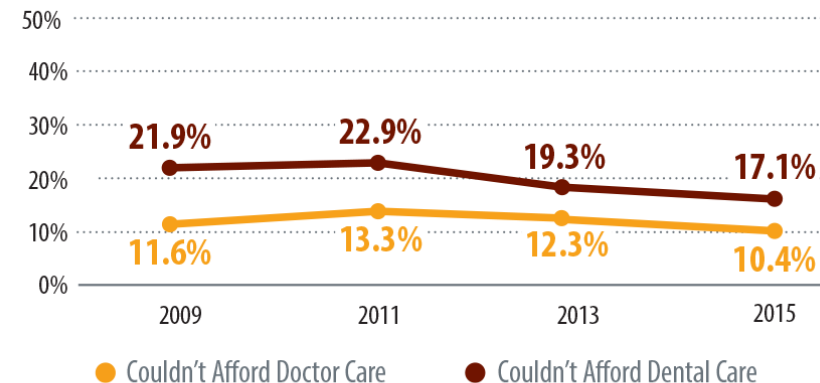
Changes in Potential Access Between 2013 and 2015





Barriers to Care

Couldn't Afford Medical or Dental Care in Past 12 Months, 2009-2015



In Past 12 Months ...

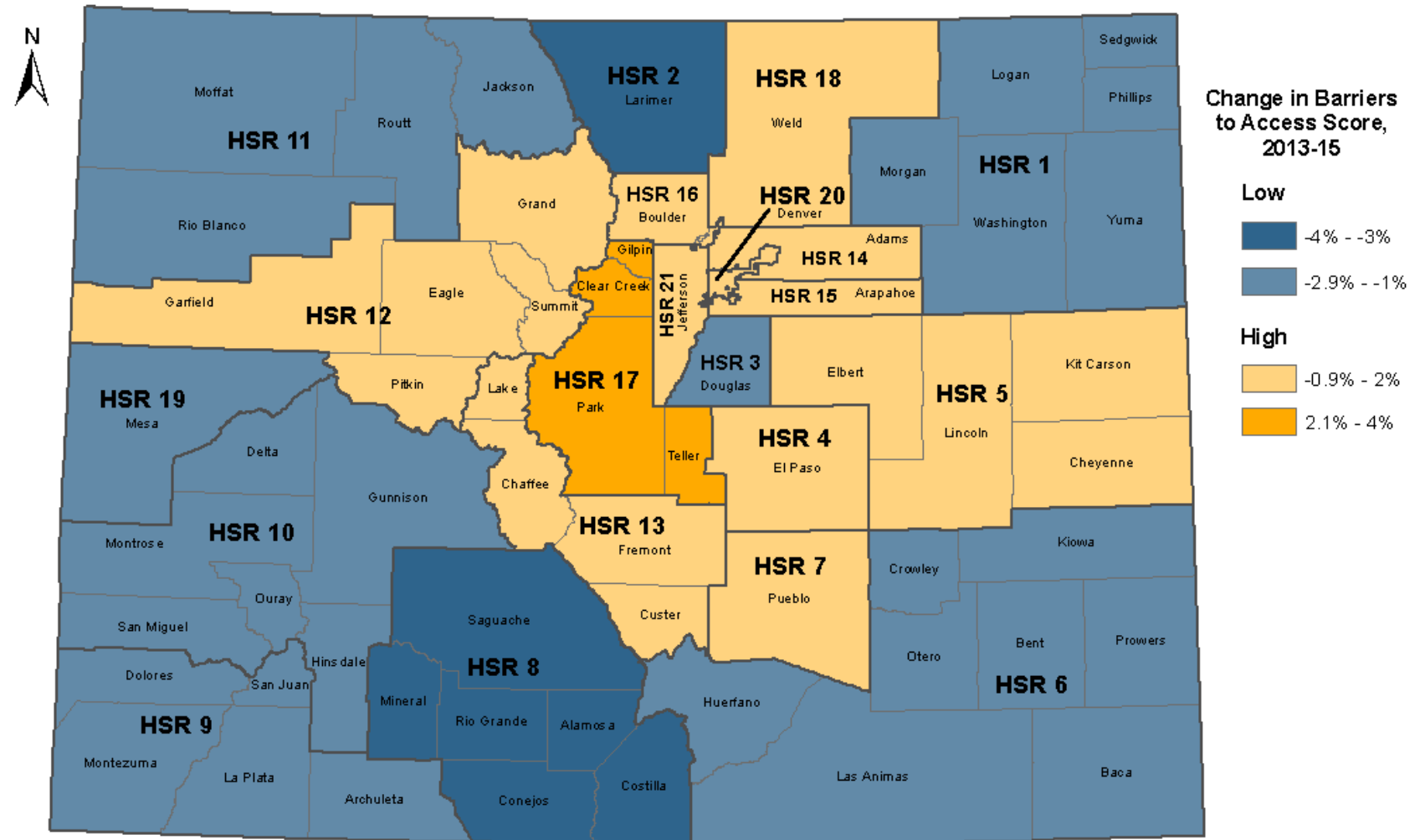
- Couldn't afford a prescription **9.8%**
- Couldn't afford specialist care **11.0%**
- Couldn't get a doctor appointment when needed **18.7%**
- Didn't have a usual source of care **13.4%**
- Provider wouldn't accept insurance **9.7%**
- Didn't get needed mental health care **9.0%**
- Didn't seek care because uninsured* **40.9%**
- Didn't go to doctor due to lack of transportation **4.7%**

*Only includes those who were uninsured at some point in the past 12 months.

Barriers to Care: Colorado's Score

2013	2015
8.8	8.8

Changes in Barriers to Care Between 2013 and 2015





Realized Access

Preventive Care

Well-child visits in the past year for those under 19 years

2011 2013 2015
72.3% 72.4% 75.9%



Received prenatal care in first trimester

87.2%

Pap test in the past three years for women aged 18+

77.0%

Mammogram in the past two years for women aged 50+

72.4%

Visited a dentist or dental hygienist in past year, all ages

2011 2013 2015
63.5% 65.3% 68.3%

Colonoscopy or sigmoidoscopy at any time for people aged 50+

69.3%

Avoidable Care

Of those who went to the ER, went for a condition that could have been treated by a regular doctor

40.2%

Hospitalized for uncontrolled diabetes, adults aged 18+

RATE PER 100,000

3.6*

Hospitalized for asthma, adults aged 18-39

RATE PER 100,000

28.1*

Updated December 2015 • Data source details available at ColoradoHealthInstitute.org/COAccessIndex • *2013 data

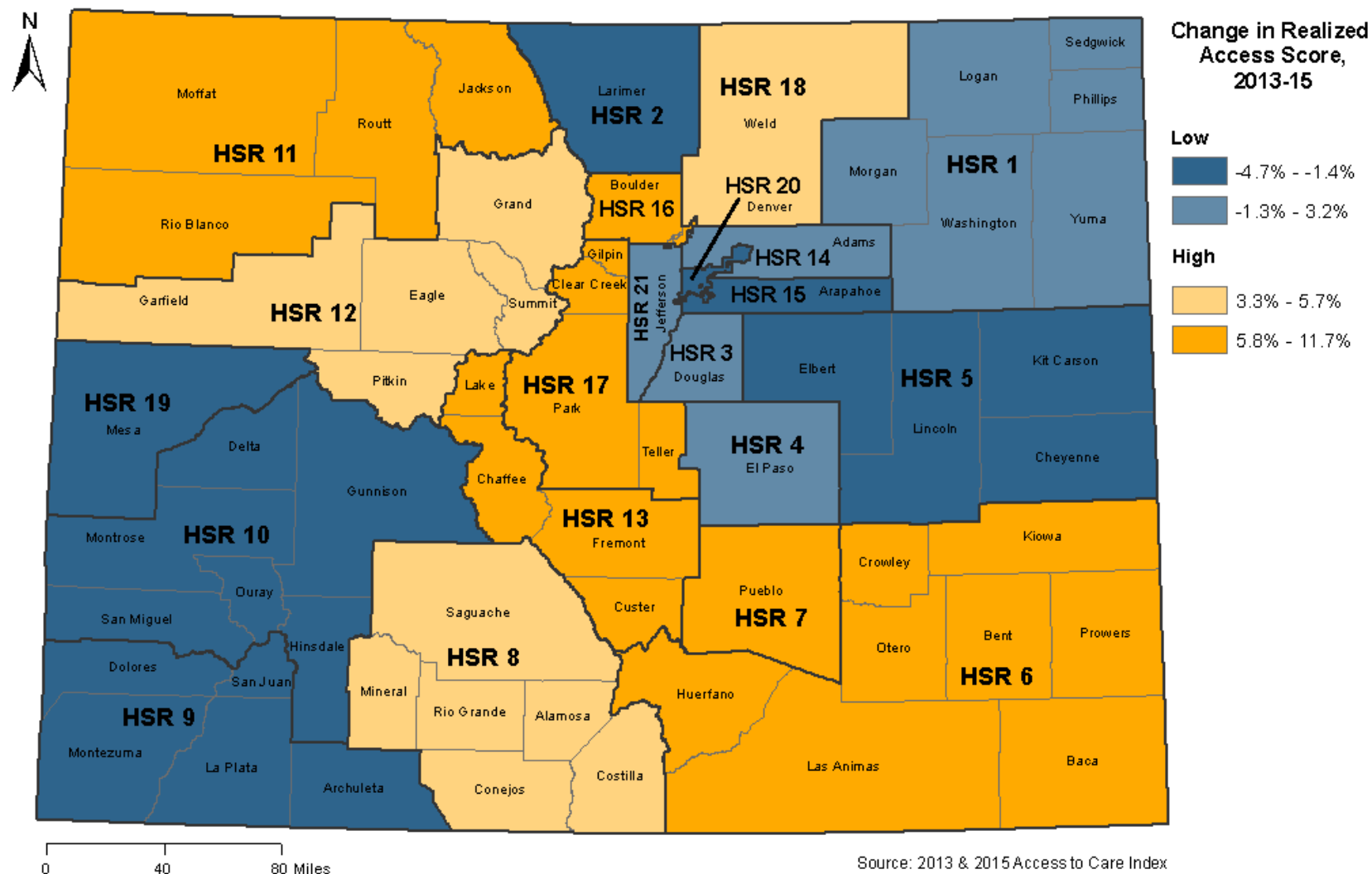
Realized Access: Colorado's Score

2013	2015
6.7	???

Realized Access: Colorado's Score

2013	2015
6.7	6.9

Changes in Realized Access Between 2013 and 2015



Access: Colorado's Score

2013	2015
7.7	7.8

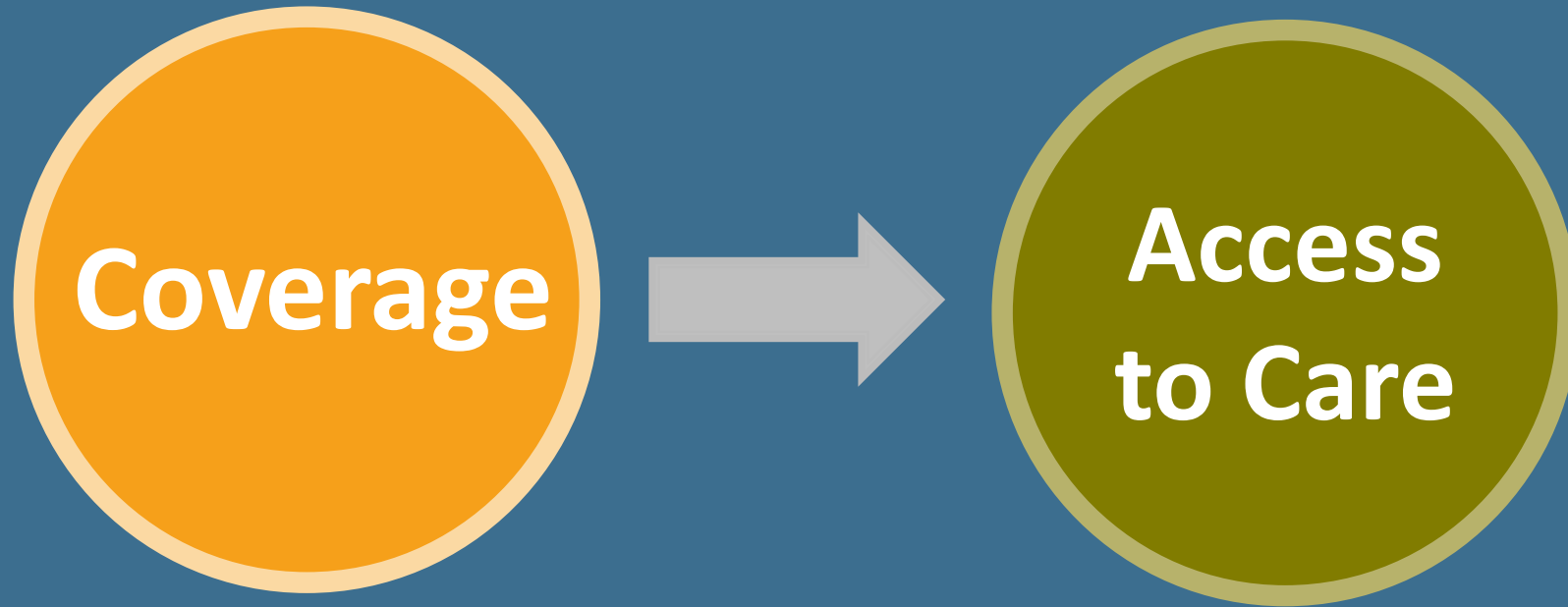
Story Three:

Policy Implications

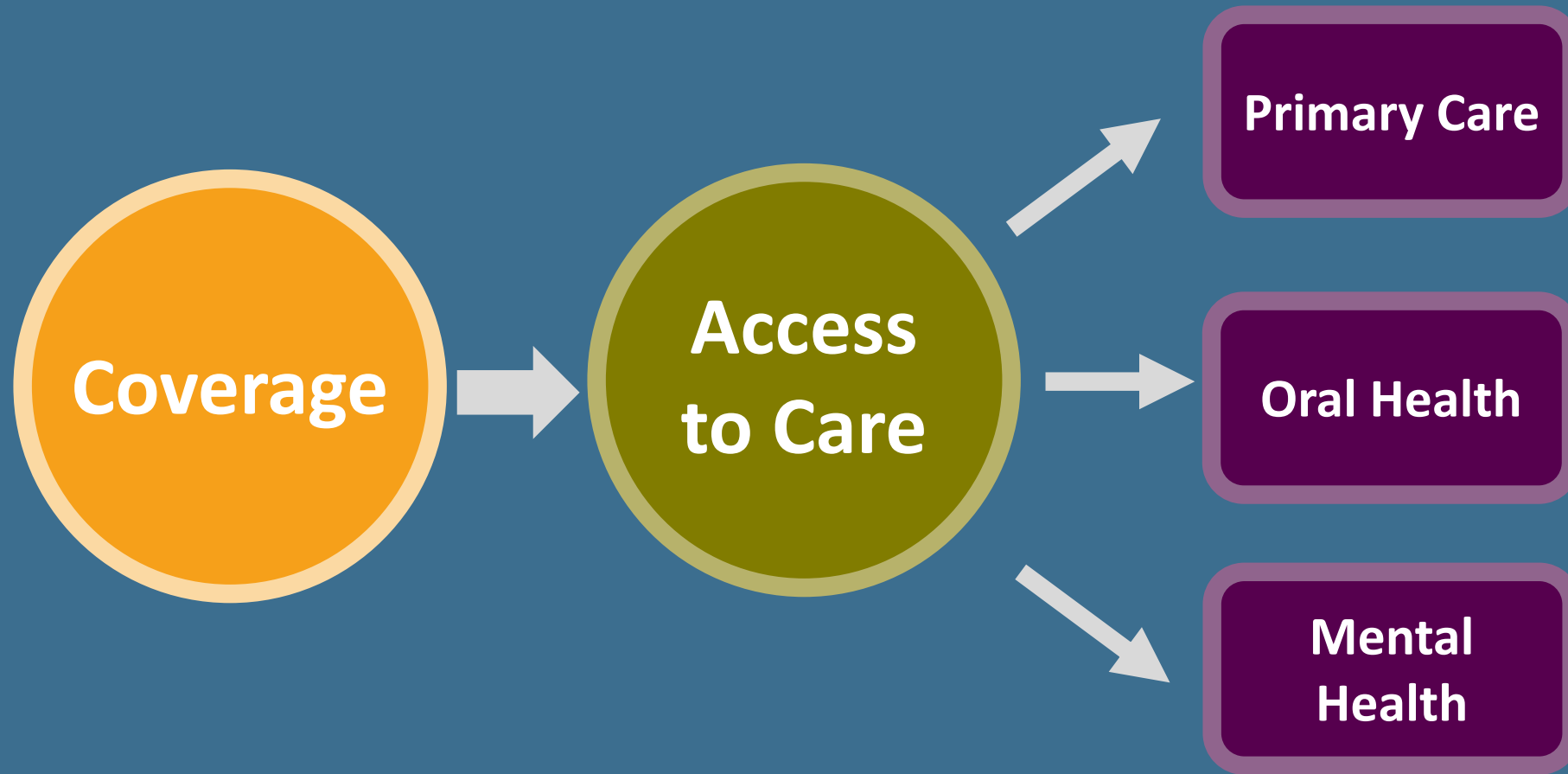
Policies at the state level give communities the tools to increase access to care and insurance coverage.



Impact of Health Reform



Continued Implementation of Colorado Laws



Looking Ahead



Three Takeaways

- Colorado's uninsured rate is at a record low. Still, there's wide variation by community – and even by neighborhood.
- But health insurance doesn't always equal access to needed and convenient health care.
- State policies are helping communities to improve insurance coverage and access to care.

2015
HOT ISSUES
IN HEALTH CARE

#HIHC15



Jessica Fern

720.382.7078 fernj@coloradohealthinstitute.org

Emily Johnson

720.382.7099 johnsone@coloradohealthinstitute.org