

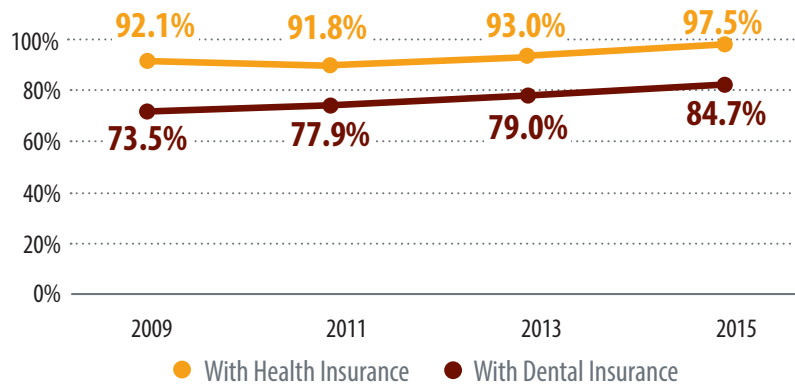


Potential Access

Adequate insurance coverage and enough local care providers make it more likely that kids will get care when they need it.



Children 0-18 years with Insurance, 2009-2015

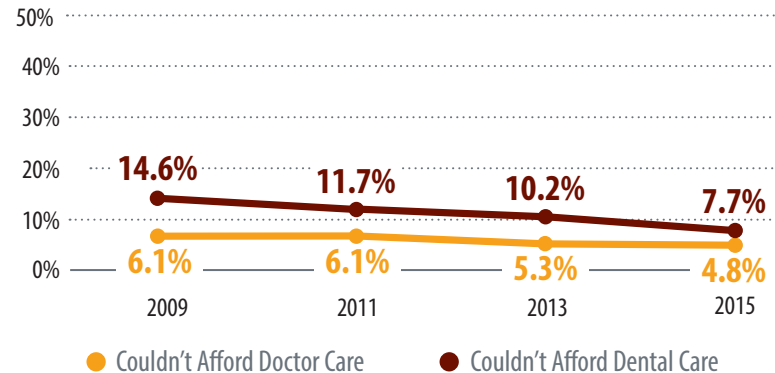


Barriers to Care

But many obstacles make it hard for kids and their families to get health care – even if they have insurance.



Family Couldn't Afford Medical or Dental Care for Child in Past 12 Months, 2009-2015



Percentage of Colorado Children Facing Barrier in Last 12 Months, 2015

Couldn't afford a prescription	5.0%
Couldn't afford specialist care	4.9%
Couldn't get a doctor appointment when needed	16.0%
Doesn't have a medical home	35.8%
Provider wouldn't accept insurance	7.9%
Didn't get needed mental health care	6.5%
Parent or guardian couldn't take time off from work	7.1%
Didn't go to doctor due to lack of transportation	3.7%

Realized Access

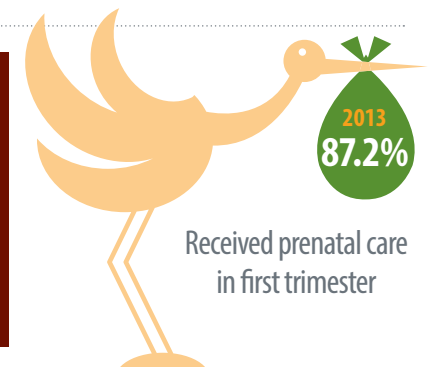
When people obtain preventive services, it's a good indication they have access to care. But emergency room visits may indicate inadequate access.



Preventive Care



Visited a dentist or dental hygienist in past year, ages 0-18



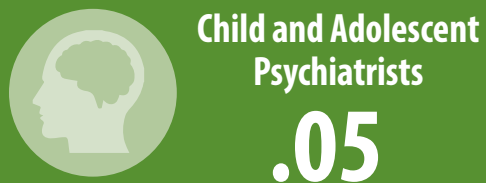
Avoidable Care

Of those who went to the ER, went for a condition that could have been treated by a regular doctor



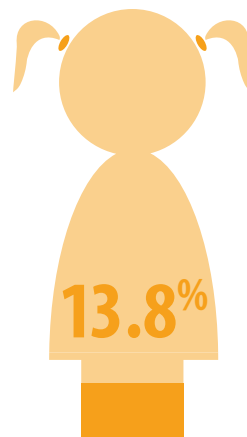
Health Care Workforce

Per 1,000 Children



Underinsured Children, 0-18

Percentage of Population



Colorado Children's Access to Care Index

Overall 2015 Score: 8.4 out of 10

2009

2011

2013

2015

*All indicators are for ages 0-18 years old unless otherwise indicated

Potential Access		Score: 8.9							
Insurance Coverage									
	Number	Percentage	Number	Percentage	Number	Percentage	Number	Percentage	
Health Insurance	1,231,067	92.1%	1,261,081	91.8%	1,256,913	93.0%	1,312,467	97.5%	
No health insurance	105,082	7.9%	112,200	8.2%	94,416	7.0%	33,206	2.5%	
Adequately insured	796,615	59.6%	814,688	59.3%	641,395	47.5%	812,096	60.4%	
Underinsured	157,543	11.8%	156,758	11.4%	154,028	11.4%	186,125	13.8%	
Dental insurance	982,061	73.5%	1,048,390	77.9%	1,048,680	79.0%	1,117,783	84.7%	
No dental insurance	337,165	25.2%	297,900	22.1%	278,359	21.0%	201,632	15.3%	
Health Care Workforce- Practicing Providers									
	Number	Percentage	Number	Percentage	Number	Rate per 1,000	Number	Percentage	
Pediatricians					609	0.46			
Child and adolescent psychiatrists					64	0.05			
Barriers to Care		Score: 9.0							
Barriers to Receiving Health Care Services									
	Number	Percentage	Number	Percentage	Number	Percentage	Number	Percentage	
Couldn't afford doctor care	81,692	6.1%	83,353	6.1%	71,968	5.3%	64,352	4.8%	
Couldn't afford a prescription	84,179	6.3%	75,562	5.5%	84,046	6.2%	67,568	5.0%	
Couldn't afford specialist care	84,542	6.3%	88,307	6.4%	71,754	5.3%	66,005	4.9%	
Couldn't afford dental care	194,179	14.6%	159,918	11.7%	138,139	10.2%	102,758	7.7%	
Couldn't get a doctor appointment when needed	181,626	13.6%	224,368	16.4%	180,099	13.4%	214,346	16.0%	
Didn't go to doctor due to lack of transportation					61,584	4.6%	49,490	3.7%	
Doesn't have a medical home (1-14 years old)***				37.2%		36.4%		35.8%	
Provider won't accept insurance	111,643	8.4%	123,275	9.0%	78,692	5.9%	105,202	7.9%	
Didn't get needed mental health care (5 to 18 years old)					56,287	5.7%	65,192	6.5%	
Parent or guardian couldn't take time off of work					103,867	9.4%	79,578	7.1%	
Didn't seek care because uninsured*					27,783	28.1%	9,738	21.1%	
Realized Access		Score: 7.3							
Use of Preventive Care									
	Number	Percentage	Number	Percentage	Number	Percentage	Number	Percentage	
Visited a dentist or dental hygienist	1,012,017	75.9%	970,563	70.9%	997,587	74.8%	1,036,675	77.2%	
Percentage of mothers who received prenatal care in first trimester**			158,876	82.5%	163,690	87.2%			
Well-child visit in the past year	983,355	74.2%	980,918	72.3%	963,207	72.4%	1,008,332	75.9%	
Pre-school aged kids that received all recommended doses of six key vaccines*** (19-35 months old)		65.2%		75.8%		69.2%		74.3%	
Use of Avoidable Care									
	Number	Percentage	Number	Percentage	Number	Percentage	Number	Percentage	
Of those who went to the ER, went for a condition that could have been treated by a regular doctor	126,251	51.0%	172,480	55.3%	153,199	53.8%	155,113	51.6%	

* Only includes those who were uninsured at some point in the past 12 months.

Details available at ColoradoHealthInstitute.org/COAccessIndex

** Roll-up of 2009-2011 data is displayed in the 2011 column and roll-up of 2011-2013 data is displayed in the 2013 column.

Updated November 2015

***Data displayed in the 2015 column are from 2014.