

Colorado's Behavioral Health Landscape

*An Overview of Needs, Access
and the Delivery System*



January 2018

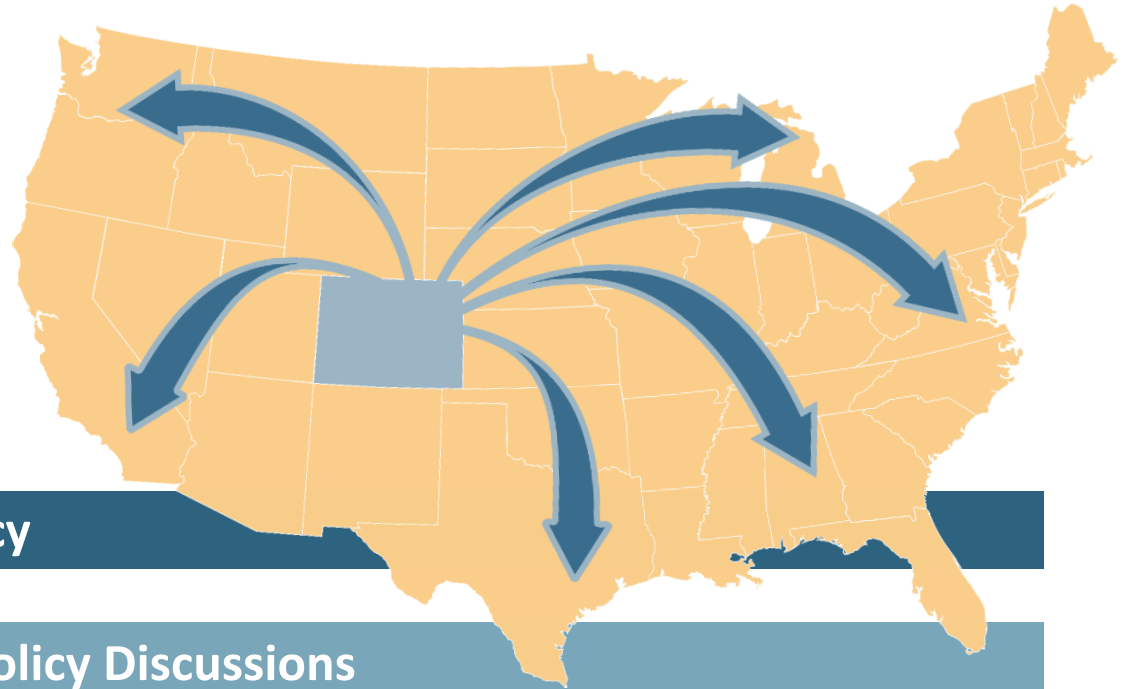
Today's Roadmap

- Need for behavioral health care
- Access to care
- How care is provided





COLORADO HEALTH INSTITUTE



Inform State and National Policy

Contribute to Current Health Policy Discussions

Support Efforts to Improve Health



Understanding Terminology

Mental Health

+

Substance Use

=

Behavioral Health

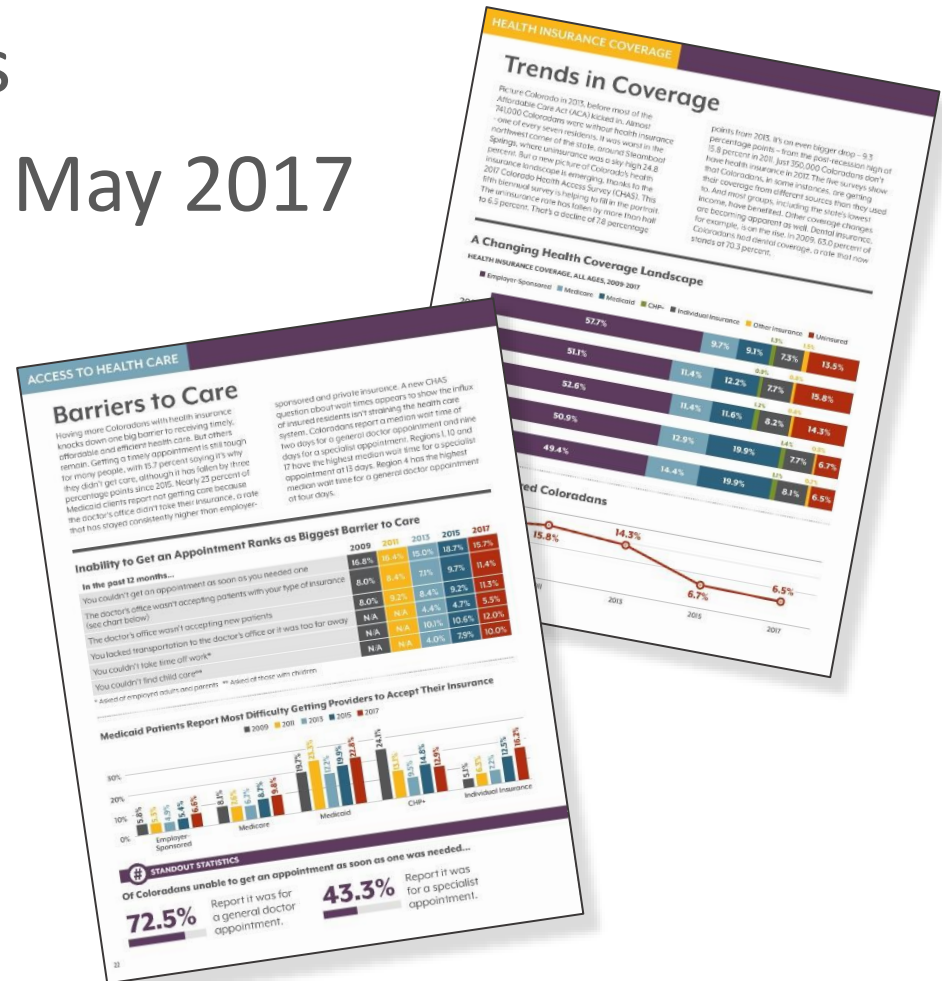




The Need in Colorado

What is the CHAS?

- Colorado Health Access Survey
- 10,000 Households
- Fielded February – May 2017



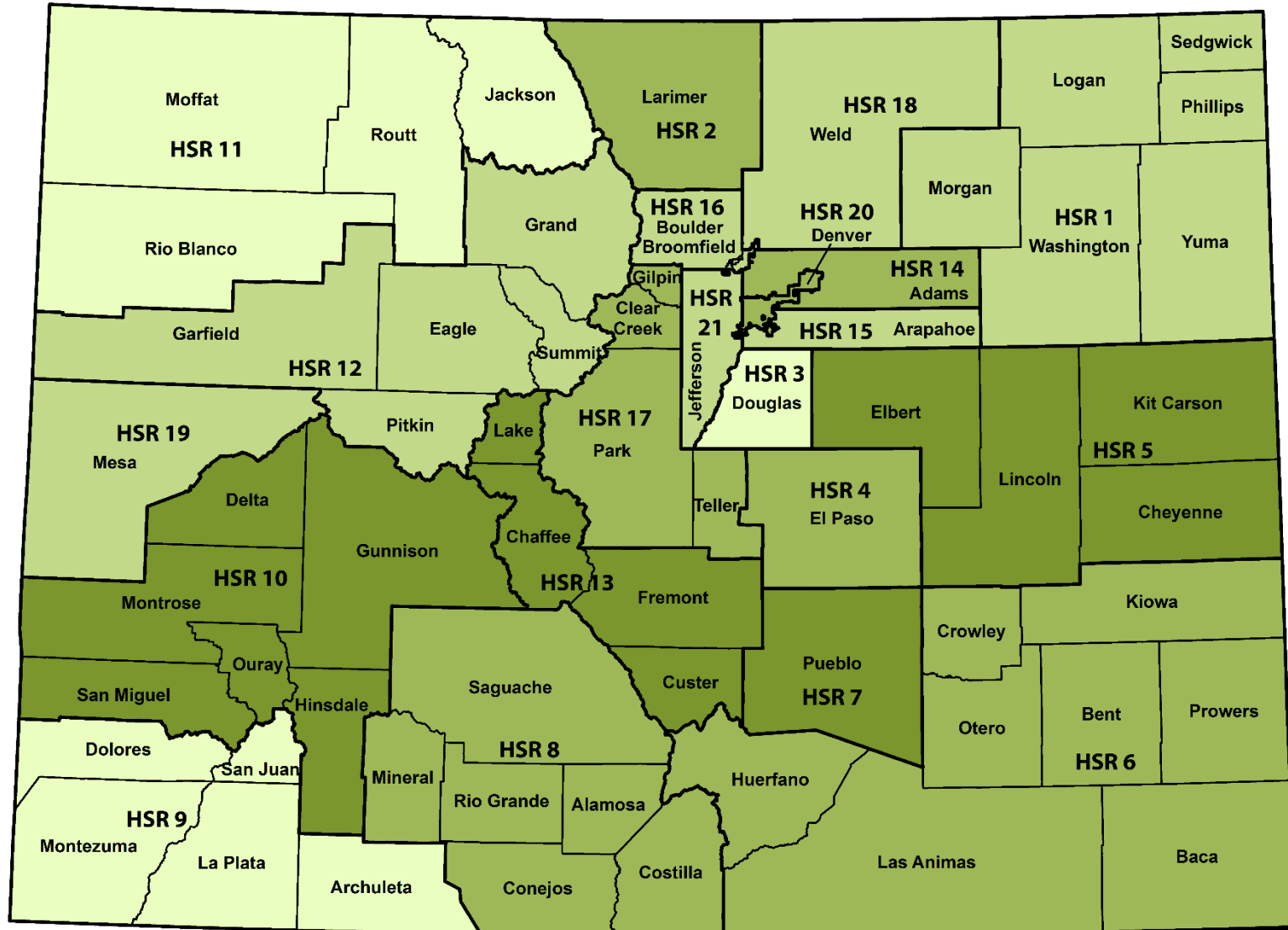
Feeling Blue



11.8%

of Coloradans report
poor mental health, up
from **9.9 percent** in 2015

Percentage who Reported Fair or Poor Mental Health



5.0% - 8.3%

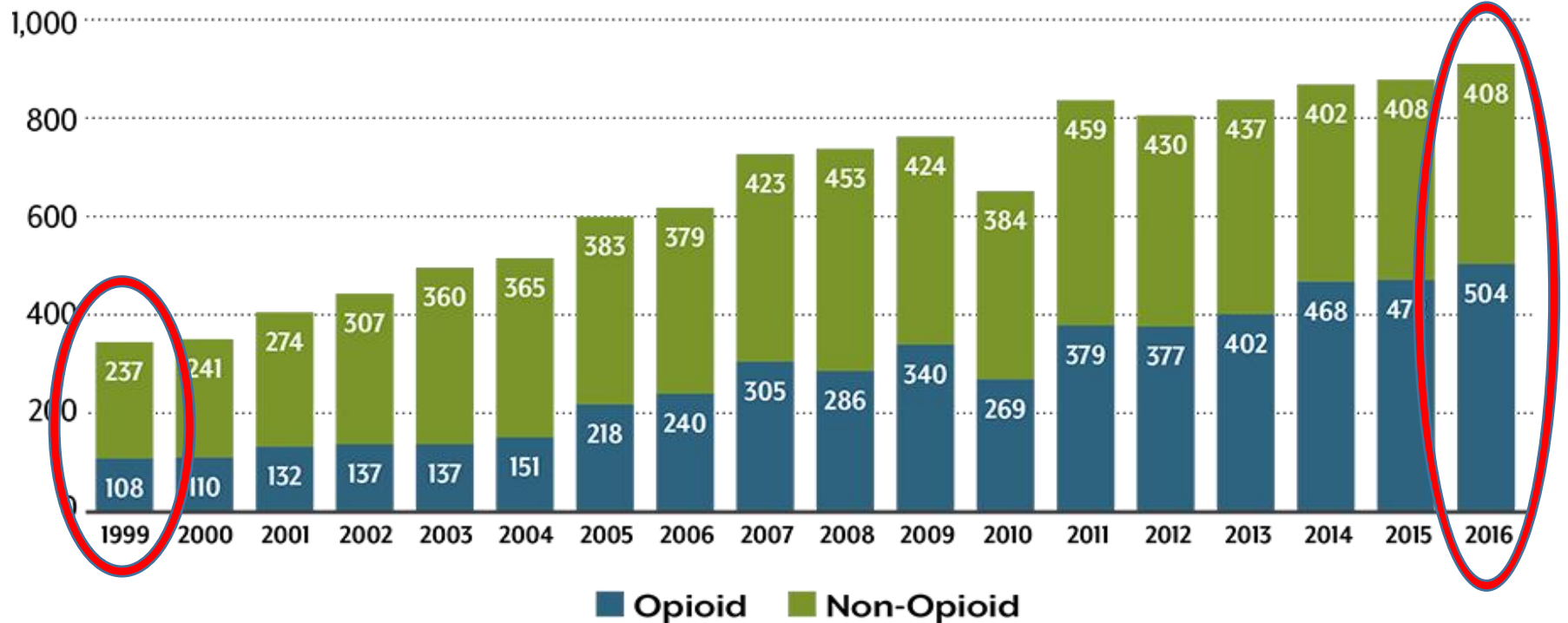
8.4% - 11.8%

11.9% - 14.0%

14.1% - 18.1%

The Overdose Epidemic

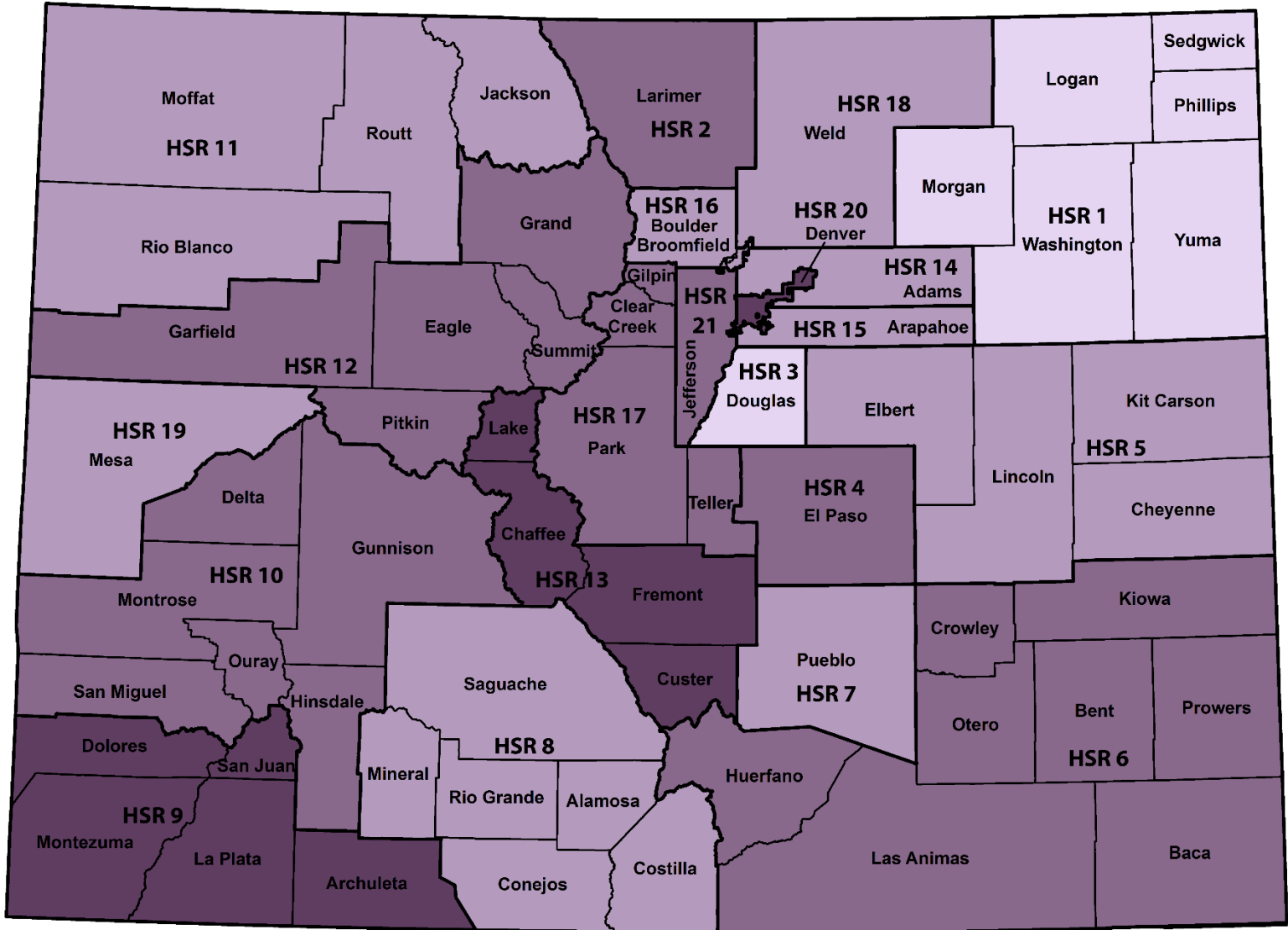
Drug Poisoning Deaths in Colorado, 1999-2016





Access to Care in Colorado

Percentage who Needed Mental Health Services but Did Not Get Them



Missing Out on Care

- One of six Medicaid patients (**15.0 percent**) didn't get needed mental health services last year
 - **43.1 percent** of Coloradans who didn't get needed care say it was because they didn't think their insurance would cover it

The Promise of Primary Care

- **16.0 percent** of Coloradans say they spoke to a primary care doctor about their mental health
- **About half** of mental health care in Colorado happens in a primary care setting



67,000 Coloradans

needed but did
not get services for
alcohol or drug use

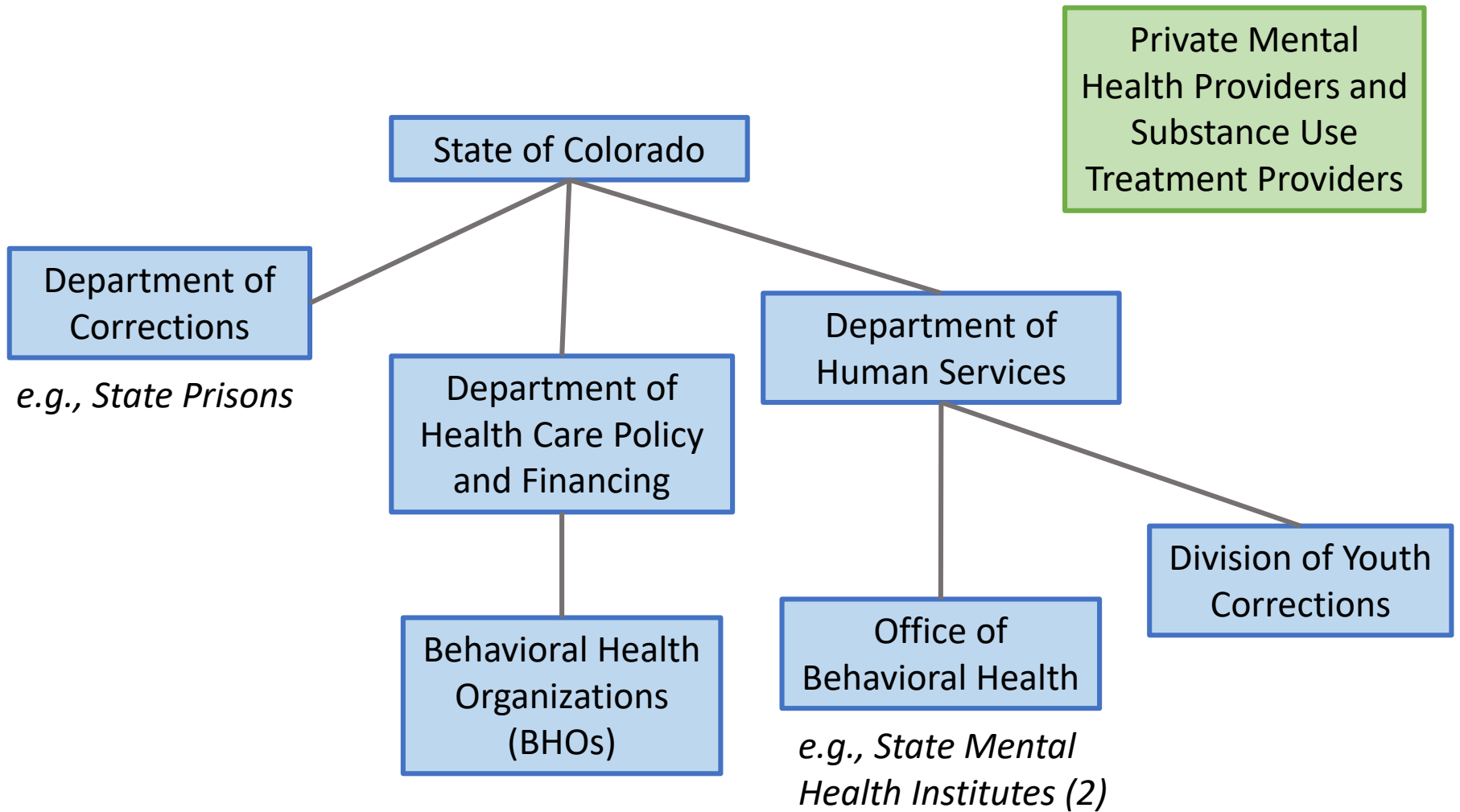






How is Care Provided?

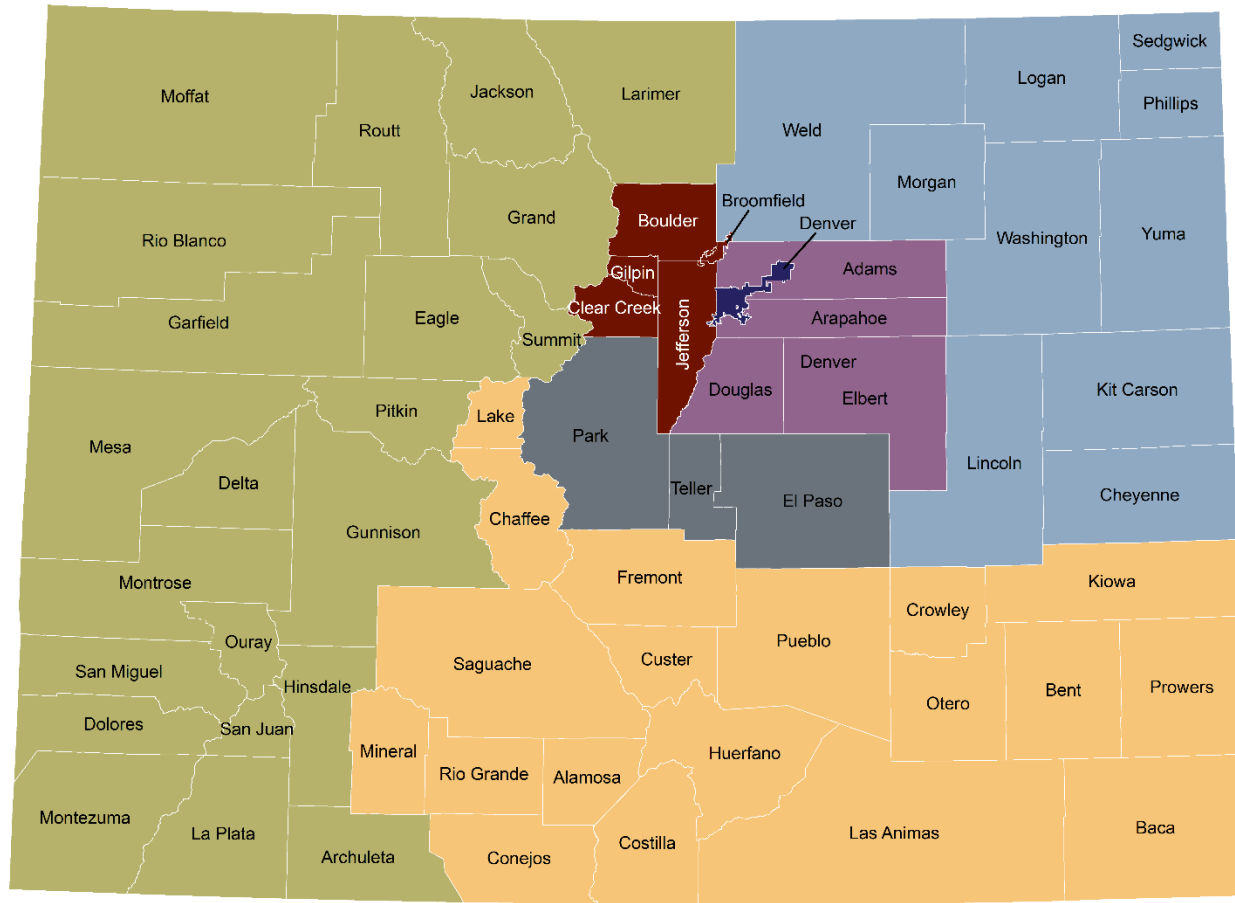
The Delivery System



New Kid on the Block: Creation of Regional Accountable Entities (RAEs) as part of the Accountable Care Collaborative (ACC)



RAE Regions and Contracts



- Region 1, Rocky Mountain Health Plans
 Region 4, Health Colorado Inc
 Region 7, Colorado Community Health Alliance
- Region 2, Northeast Health Partners
 Region 5, Colorado Access
- Region 3, Colorado Access
 Region 6, Colorado Community Health Alliance



Additional Resources

