

A Half Million Newly Insured: Is Colorado Ready?

December 12, 2011



colorado health
INSTITUTE

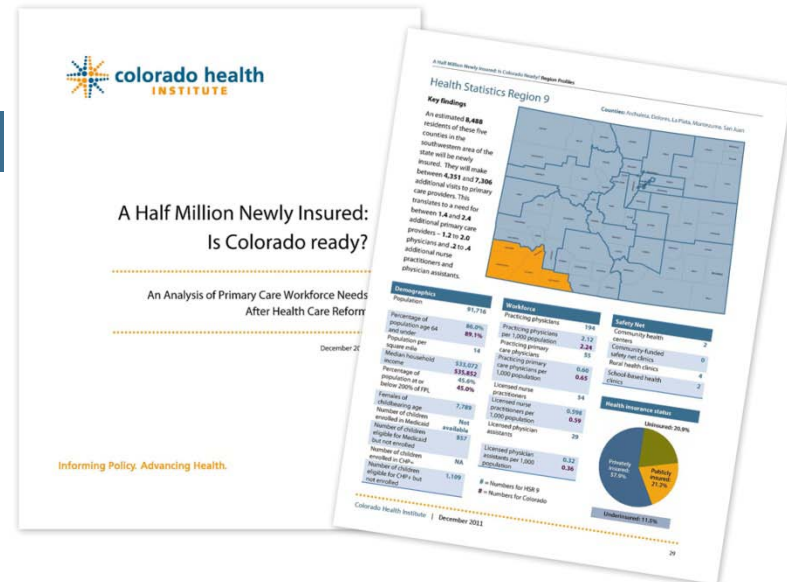
Is Colorado's Health Care System Ready?

How many additional primary care providers will Colorado need to care for the newly insured?



Our Perspective

- First of its kind forecast of Primary Care need
- Moves planning efforts from conceptual to tactical
- Caring for the newly insured will stress but not break our current delivery system



CHI's Key Findings

The ***additional*** primary care providers Colorado will need in 2016 to care for the newly insured.

- Between **83 and 141** additional primary care providers
- Physicians: **71 to 117**
- Nurse Practitioners and Physician Assistants: **12 to 24**



The Newly Insured

510,000 Coloradans – nearly one of every 10 residents – will obtain health insurance

130,000 will enroll in the federal-state Medicaid insurance program

380,000 will purchase private insurance – through employer, the exchange or individual market.

Expected Office Visits by Newly Insured

- Multivariate regression model
- Data source (MEPs) allows analysis of medical usage by characteristics such as age, gender, health status
- Number of projected **increased** visits when going from uninsured to insured (above and beyond any yearly visits when uninsured.)



Additional Primary Care Visits in Colorado

- Multiply individual visit data by number of newly insured in Colorado

- Result: Between **256,010 and 432,420** additional office visits to physicians, nurse practitioners and physician assistants each year



Provider Productivity Factor

- Determined by Medical Group Management Association (MGMA) survey
- Affected by hours worked, training and experience, patient population.

- **3,137** annual patient encounters for one full-time-equivalent Colorado physician
- **2,688** annual patient encounters for one full-time-equivalent NP or PA



Answering The Question

- The number of increased office visits is divided by the provider productivity factors
- Colorado needs:

• Between **83 and 141** additional primary care providers

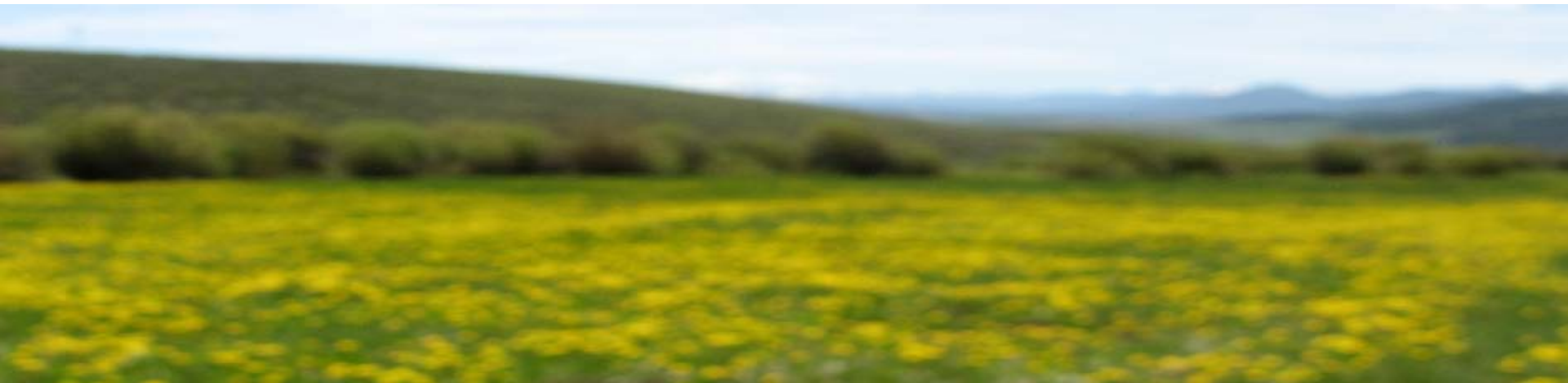
Physicians: **71 to 117**

Nurse Practitioners and Physician Assistants: **12 to 24**



The Context

- Current need or shortage
- Challenge of ½ a clinician
- Coverage ≠ Access
- Beyond the model
 - Aging
 - Economy and unemployment
 - New Models of Care
 - Current assessment of primary care need



New rationale for current strategies

- Recruitment and Retention
- Payment reform/
improvement
- Promise of care
coordination
- Telehealth and
telemedicine
- Hub-and-spoke delivery
model
- Rural initiatives



The Colorado Health Institute serves as a trusted and leading source of credible health information for Colorado leaders.

www.coloradohealthinstitute.org/projects/NewlyInsured



colorado health
INSTITUTE

Michele Lueck

720.382.7073

lueckm@coloradohealthinstitute.org