

“The CHAS is the gold standard for information about the health of Coloradans.”

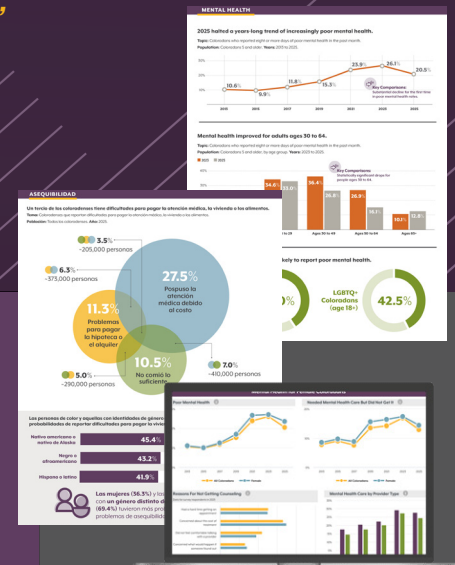
COLORADO HEALTH ACCESS SURVEY

A Crucial State Resource

The Colorado Health Access Survey (CHAS) is a statewide resource that helps Coloradans understand and act on the health and social factors affecting our communities. The biennial survey helps leaders at all levels determine where to focus resources and assess the impacts of policy decisions.

The value of the CHAS has come into sharp focus as many federal data sources become less available and complete. And the 2027 survey may be the most important yet; it will capture the impact of cuts to health and social benefits driven by tight state budgets and federal policy changes.

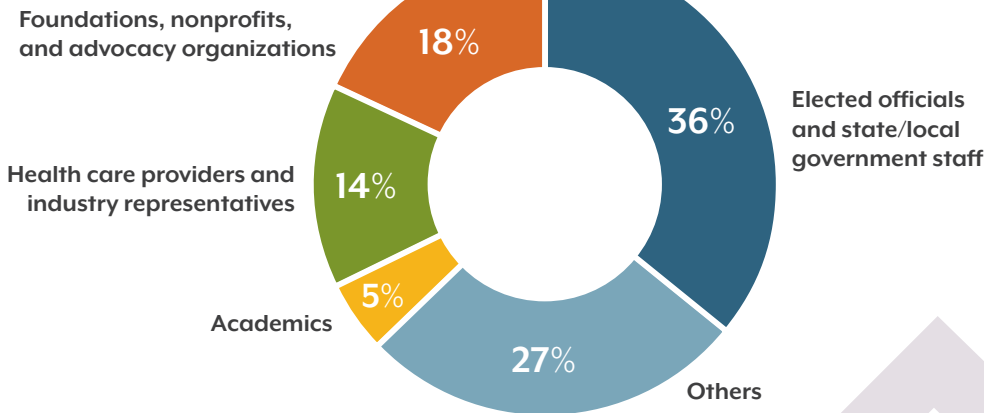
The Colorado Health Institute needs your financial support for this important data source.



What Makes the CHAS Special

- ▶ Data trends back to 2009
- ▶ Responsive to emerging issues
- ▶ Free and publicly available data in a variety of formats
- ▶ Findings that show differences among demographic groups
- ▶ Data that are weighted to be representative of all Coloradans or specific communities within Colorado

Who Uses the CHAS



How the CHAS Is Used

- ▶ Advocacy
- ▶ Evaluation
- ▶ Community-level or state-level decision-making
- ▶ Grant writing
- ▶ Needs assessments
- ▶ Organizational or project priority-setting
- ▶ Research
- ▶ Targeted education

89%

of CHAS users say the data is extremely or very helpful.

“CHAS data lends evidence to our policymaking decisions. It’s critical we can quantify access issues, so we know where to dedicate public resources.”

Support the CHAS

Contact CHI Director Suman Mathur to find out how you can support the CHAS: mathurs@coloradohealthinstitute.org

