



# METRO DENVER

## PARTNERSHIP FOR HEALTH

The Metro Denver Partnership for Health (MDPH) is a partnership among public health, health systems, and Regional Accountable Entities (RAEs) serving more than 3 million people who live in the Denver metro area.

### Why We Work Together

Health does not recognize county borders. We cannot achieve our mission of improving population health regionally without strong, multi-sector partnerships. MDPH also works alongside regional leaders in human services, health alliances, behavioral health, community-based service organizations (CBOs), environment, philanthropy, government, and education.

### How We Achieve Impact

The MDPH Regional Collaborative Committee provides a platform for shared leadership, capacity building, and networking opportunities across all sectors within MDPH. The MDPH Local Public Health Agency (LPHA) Steering Committee includes executive leaders from each public health agency who work together on shared public health priorities.

These two committees guide MDPH's strategic direction, identify gaps and emerging opportunities for current and new topic-specific workgroups, and ensure MDPH is proactively improving health and addressing inequities in metro Denver. The Colorado Health Institute provides facilitation, strategic services, and administrative support for MDPH.

### Our Mission

We build partnerships between our agencies and across sectors to increase capacity for achieving our vision.

### Our Vision

Improved health in metro Denver through regional collaboration.

## Our 2023 Priority Areas



### Health Equity

Cultivate cross-sector collaboration, and innovate and advocate for equitable practices within MDPH and through our communities



### Immunizations

Address inequitable outcomes of vaccine preventable diseases by promoting immunizations through community-based ambassador organizations



### Behavioral Health

Reduce stigma associated with mental health among priority populations by partnering with community organizations to increase their capacity to promote anti-stigma messages within their communities



### Social Health Information Exchange (S-HIE)

Advance whole-person and whole-family well-being by coordinating resources and services across health care, human service, and community-based providers



### Climate Change

Advance public health planning and response to climate change, with an emphasis on adaptation



### Healthy Eating Active Living

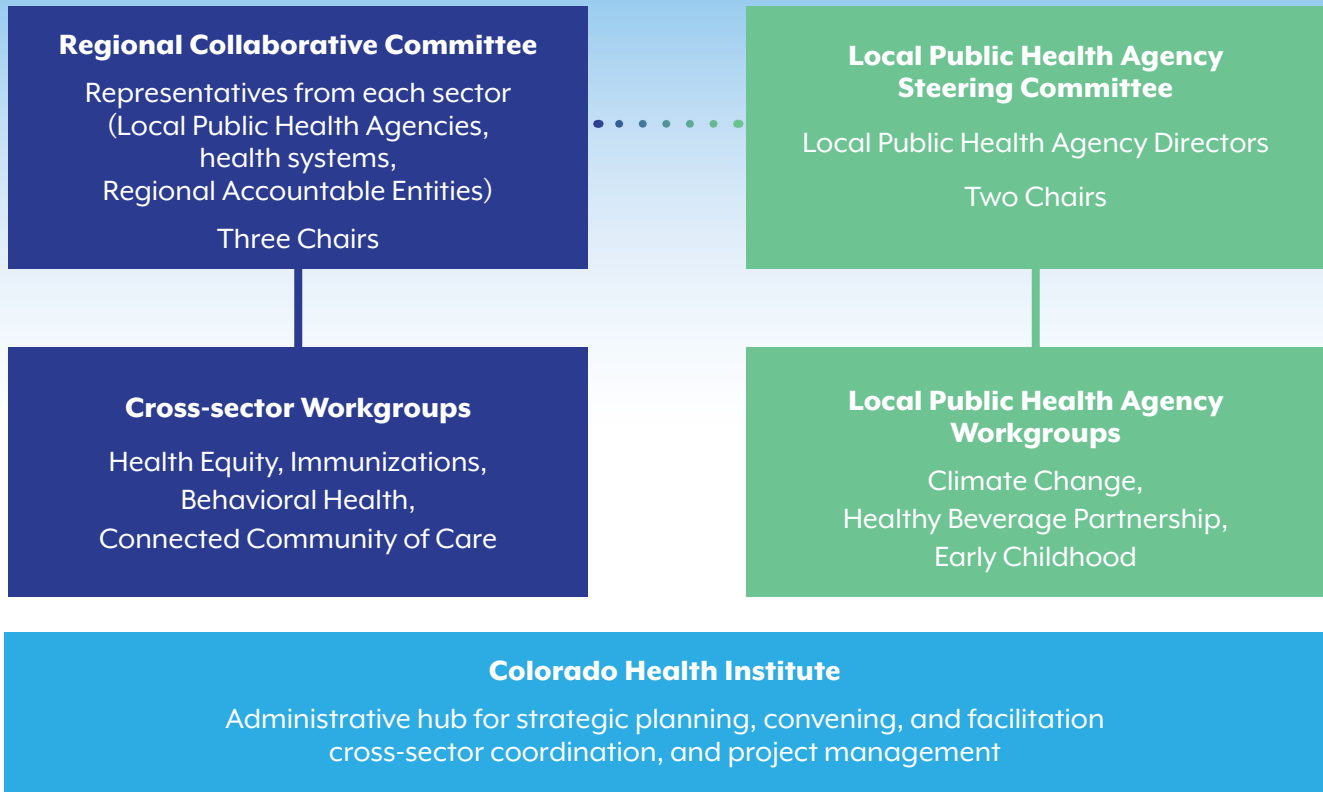
Address health inequities and unhealthy childhood weight experienced by children and communities of color through the Healthy Beverage Partnership



### Early Childhood

Support maternal and child health initiatives, including prevention programming and collaboration with other regional efforts

# Metro Denver Partnership for Health



## Getting Involved: Current Partners and Goals

### Current Partners

#### LPHAs:

Adams County Health Department, Arapahoe County Public Health, Boulder County Public Health, Broomfield County Public Health and Environment, Denver Department of Public Health & Environment, Jefferson County Public Health, Douglas County Health Department, and Public Health Institute at Denver Health

#### RAEs:

Colorado Access and Colorado Community Health Alliance

#### Health Systems:

AdventHealth, Children's Hospital Colorado, CommonSpirit Health, Denver Health, HealthONE, Kaiser Permanente, National Jewish Health, Intermountain Healthcare, and UCHealth

### Goals

#### By working together, we aim to achieve the following goals:

- Clarity in health care and public health's collective voice
- Improved partnership and collaboration among sectors
- Increased alignment in our public health, assessment, and population-level implementation plans, resulting in increased efficiency and consistency in engaging with our communities
- Reduced burden on community members and MDPH stakeholders by providing a single venue for public engagement
- Pooled resources and improved funding reach
- Better awareness and capacity to address health equity needs leading to decreased health disparities
- Increased trust, respect, and commitment among partners in all roles
- Improved and accessible data at a regional level
- *Improved health outcomes*

If you are interested in learning more or joining MDPH,  
please reach out to Nicole Weber at [webern@coloradohealthinsitute.org](mailto:webern@coloradohealthinsitute.org)

[colo.health/MDPH](http://colo.health/MDPH)