



The Hitchhiker's Guide to Social-Health Information Exchange

The best source of advice for those who want to attend
the First Annual Convening of

*the Metro Denver Social-Health
Information Exchange initiative*

APRIL 19 - 20, 2022

WELCOME

Social-Health Information Exchange is big.

Really big.

Although it can't cover the entirety of social-health information exchange, this Hitchhiker's Guide will tell you what to expect at this year's **Metro Denver Social-Health Information Exchange** convening and provide resources to help you prepare.

DON'T  **PANIC!**

What to expect at this year's convening

The Metro Denver Social-Health Information Exchange initiative is led by the Metro Denver Partnership for Health. Metro Denver partners include public health agencies, health systems and hospitals, community-based organizations, community members, Regional Accountable Entities, and technical organizations. The Colorado Health Institute convenes and facilitates the initiative and is hosting this year's convening.

The convening will bring together metro Denver partners to launch 2022 social-health information exchange priorities and activities.

GOAL:

Metro Denver partners are energized and engaged as leaders to advance social-health information exchange in 2022.

WHERE:

Virtual, via Zoom.

ALL ARE WELCOME:

The convening is open to everyone — existing partners and anyone interested in learning more about or getting involved with the Metro Denver Social-Health Information Exchange (S-HIE) initiative.

THE ANSWER:

42

TUESDAY, APRIL 19

8:45 a.m. - 9:05 a.m.

Convening Launch

9:05 a.m. - 9:25 a.m.

Centering Community Voice in the S-HIE Ecosystem: Keynote Speaker

9:25 a.m. - 10:15 a.m.

Leading with Purpose and Inspiration: *Strengths, challenges, and opportunities to advance S-HIE*

10:15 a.m. - 10:30 a.m.

Fuel Up: Break Time

10:30 a.m. - 11:30 a.m.

Coalescing our Ideas and Energy: *Chart our collective strengths, challenges, and opportunities to prepare for our journey in 2022*

Closing Remarks

WEDNESDAY, APRIL 20

Special Acknowledgement:

We respectfully acknowledge the 23rd anniversary of the Columbine High School shootings and dedicate today's work to supporting the health and safety of everyone in our schools, neighborhoods, and communities.

12:45 p.m. - 1:05 p.m.

Welcome, Going the Distance

1:05 p.m. - 1:30 p.m.

Leveraging our Integrative Governance Structure: *How we will keep advancing S-HIE together*

1:30 p.m. - 2:15 p.m.

Strategizing for a Successful Year: *Workgroups consider their roles in tackling challenges and opportunities ahead*

2:15 p.m. - 2:30 p.m.

Fuel Up: Break Time

2:30 p.m. - 3:15 p.m.

Defining our Commitments to the Overall S-HIE Initiative: *Workgroups sketch partner commitments to put into action in 2022*

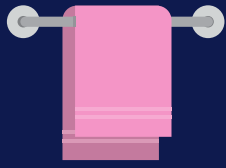
3:15 p.m. - 4:00 p.m.

Closing Remarks: *Maintaining our energy and momentum in 2022*

Click to register for April 19

Click to register for April 20

What you need to know

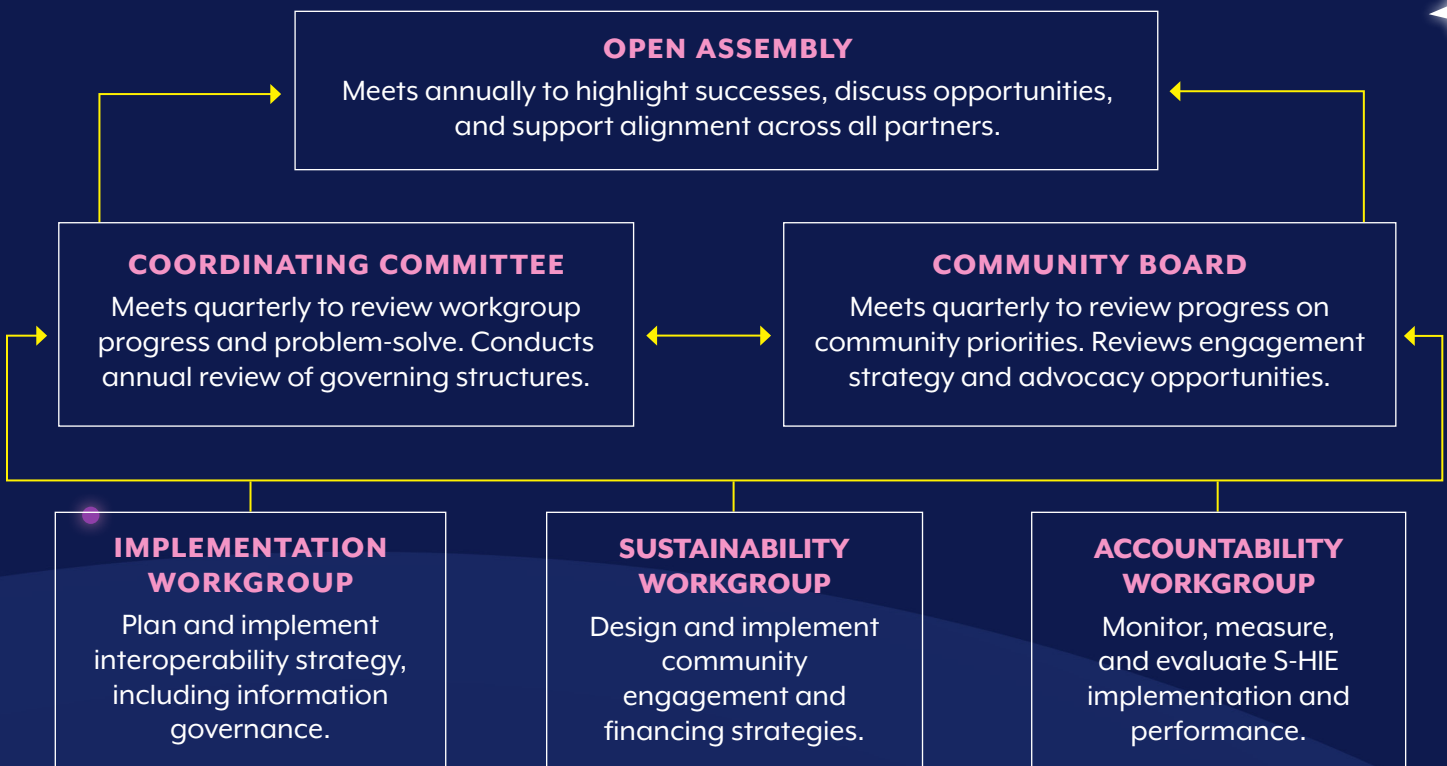


THE MISSION OF THE METRO DENVER S-HIE INITIATIVE:

We collaborate and align technology, connecting community resources and the people they serve.

The Metro Denver S-HIE initiative has adopted an integrative governance structure that allows for all partners to share in decision-making, responsibilities, and activities to advance our shared mission.

Metro Denver S-HIE Integrative Governance Organizational Chart



Review these resources to prepare for the convening:

Note: Links are case sensitive

Metro Denver Social Health-Information Exchange website
colo.health/S-HIE

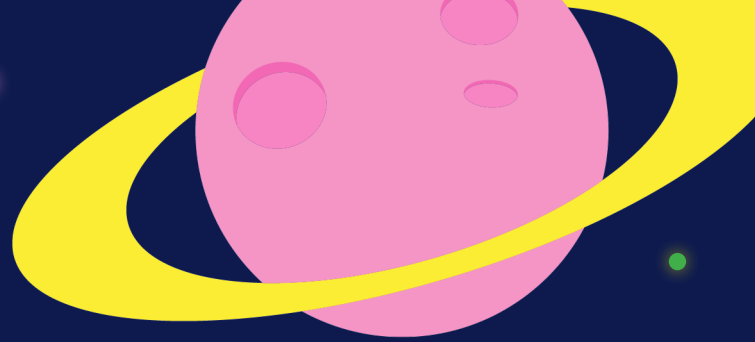
Advancing a Coordinated Ecosystem for a Social Health Information Exchange (S-HIE) in Colorado
colo.health/S-HIEinCO

S-HIE Value Proposition
colo.health/Value

S-HIE Eggheads webinar (optional)
colo.health/Eggheads

Additional resources:

- Colorado's Office of eHealth Innovation colo.health/OeHI
- San Diego Community Information Exchange colo.health/CIESD
- The Gravity Project: Social Interventions Research & Evaluation Network (SIREN) colo.health/SIREN



Special Thanks

Thank you to the National Center for Complex Health and Social Needs, an initiative of the Camden Coalition, for sponsoring our first annual convening.

We also thank local partners who have collectively funded the Metro Denver S-HIE initiative's activities in 2022 through:

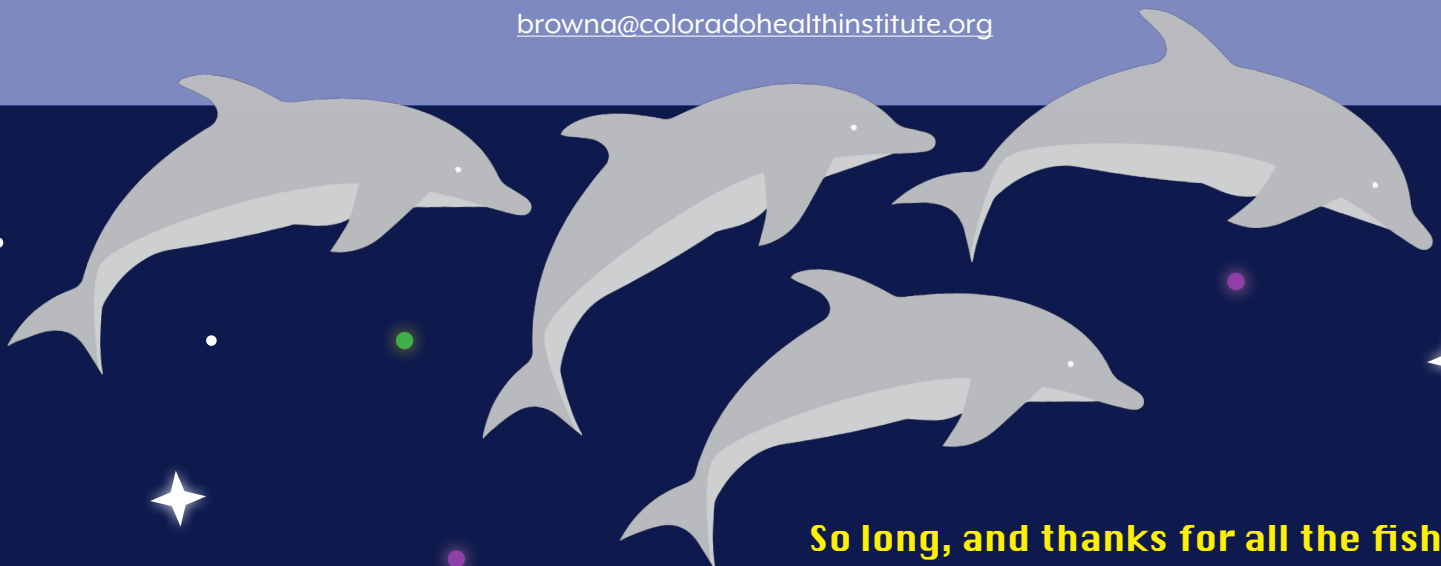
- Metro Denver Partnership for Health membership dues;
- Generous additional member contributions from Colorado Access, Kaiser Permanente Colorado, SCL Health, Centura Health, Denver Health, Denver Department of Public Health & Environment, and UCHHealth; and
- Grants from Colorado Community Health Alliance, Colorado Department of Public Health & Environment, and the Telligon Community Initiative.

WANT TO GET INVOLVED?

Reach out to us if you want to learn more or get involved:

Kirsti Klaverkamp, Program Manager
klaverkampk@coloradohealthinstitute.org

Ashlie Brown, Director
browna@coloradohealthinstitute.org



So long, and thanks for all the fish.