



# Working Together to Transform Health Care

The Colorado Health Care  
Innovation Plan Kick-Off

May 29, 2013



# Welcome!

## **Wireless information:**

Network: SOC\_Guest

Username: guest

Password: guest1

**Twitter hashtag: #COSIM**

**Website: [ColoradoSIM.org](http://ColoradoSIM.org)**

# Today's Discussion

- Opening Remarks – Sue Birch
- Background and Overview – Lorez Meinhold
- Defragmenting Health Care – Ben Miller
- Stakeholder Involvement – Michele Lueck
- Colorado's Innovation Plan – Edie Sonn



# Seizing Our Moment

Sue Birch

Executive Director

*Department of Health Care Policy and Financing*



# Perfect Time to Transform Our System

Governor's  
Vision and  
Commitment

Innovative  
Work  
Statewide

Strong  
History:  
208  
Commission

Collaboration:  
We Get It



# Our Goal: The Healthiest State

## What It Will Require

- Expertise
- Will
- Drive
- Determination

## What It Will Look Like

- Coordinated
- Efficient
- Effective
- Integrated

## What It Will Mean

- Healthier Coloradans
- Better system
- Lower costs



# Our Team: You Are Essential

\$2 million award  
for **Colorado Health  
Care Innovation Plan**

One of Three States

A Colorado  
Opportunity

Convene Experts.  
That's You.  
Build Integrated Vision.  
Create Guide to Lead  
Efforts.



# Our Work: It Starts Today





# Background and Overview of the Colorado Health Care Innovation Plan

Lorez Meinhold

Deputy Executive Director/Director Community  
Partnership Office

*Department of Health Care Policy and Financing*



# Our Opportunity

- **Funding:** \$2 million award from the Center for Medicare & Medicaid Innovation
- **Program:** State Innovation Model (SIM) Initiative
- **Deliverable:** Updated and refined Colorado Health Care Innovation Plan
- **Strategy:** State level innovation to accelerate change



# Didn't Colorado Just Submit a SIM Application?

As a result of  
last year's work  
on the SIM  
Grant:



**Gold Medal Awards:**  
Arkansas, Maine,  
Massachusetts, Minnesota,  
Oregon, Vermont



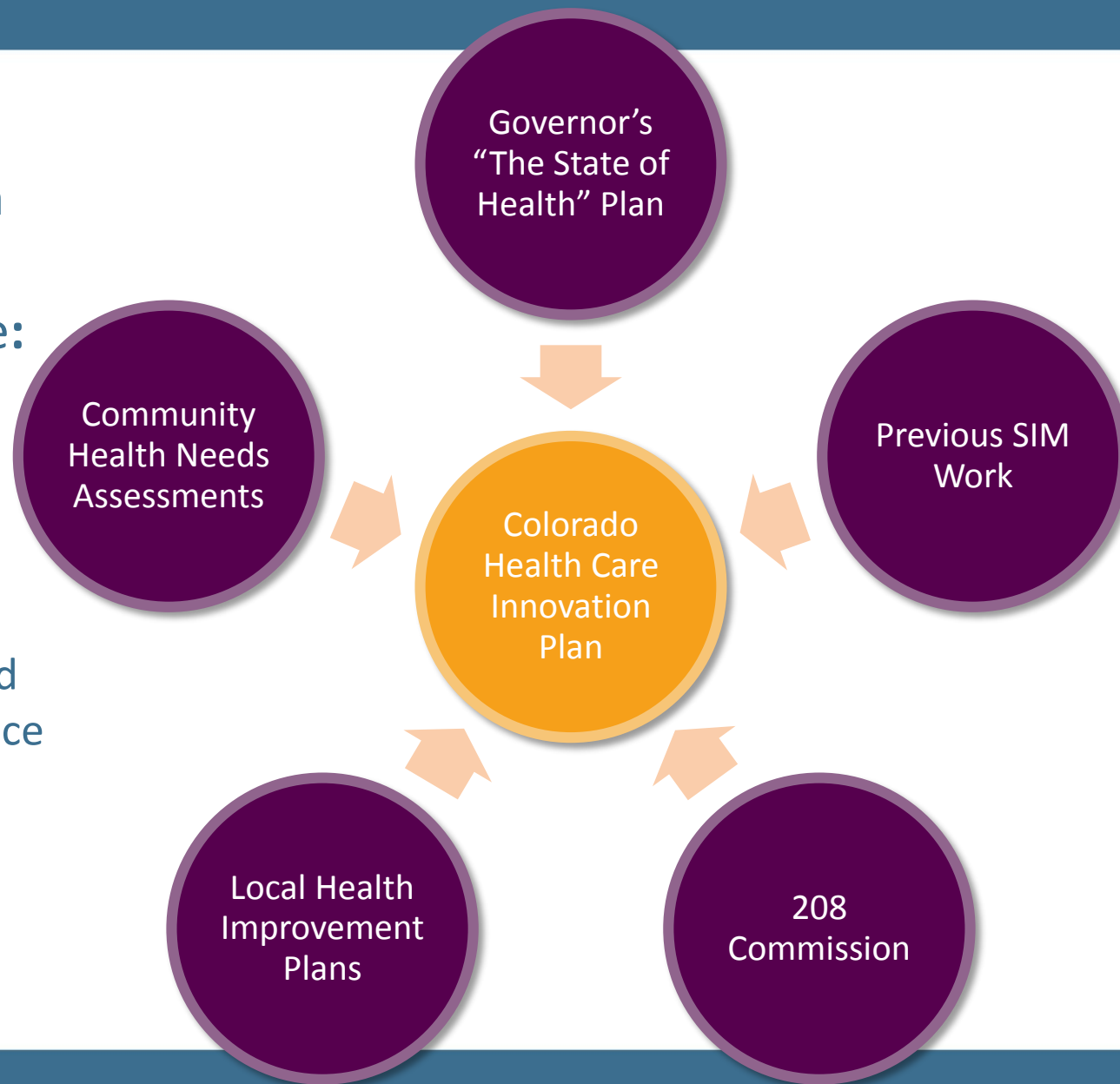
**Silver Medal Awards:**  
A.K.A. "Pre-Testing Awards"  
Colorado, Washington,  
New York



# How Does All Our Work Fit Together?

## The Colorado Health Care Innovation Plan Combines **Core Elements** to Produce:

- Payment reform coupled with care redesign.
- Plan to improve population health and patient care experience and control costs.
- Statewide impact.



# What Do We Have to Produce?

## A Lot. And All by **October 30.**

Model to integrate **behavioral health** into primary care.

Proposals for **specific populations**, including homeless.

A **driver diagram**.

The Colorado Health Care Innovation Plan **report**.



# Innovation Plan: Book and Chapters

The Book:  
**Colorado Health Care Innovation Plan**  
Overall vision and how we get there

The Chapters:  
Major drivers and strategies

**Chapter 1**

Integrate  
Physical and  
Behavioral  
Health

**Chapter 2**

Establish  
Health  
Homes

**Chapter 3**

IT Infra-  
structure

**Chapter 4**

New  
Payment  
Models

**Chapter 5**

Benefit  
Design and  
Market-  
places

**Chapter 6**

Improve  
Quality  
Through  
System  
Redesign



# Could Colorado could still win a big SIM award?

It puts us in a **great** position to take the next step.

No model-testing awards available right now.

When new round announced, Colorado will apply.

Behavioral health chapter will inform our proposal.



# Defragmenting Health Care

Benjamin F. Miller

Director of the Office of Integrated Healthcare  
Research and Policy

*Department of Family Medicine*

*University of Colorado Denver School of Medicine*



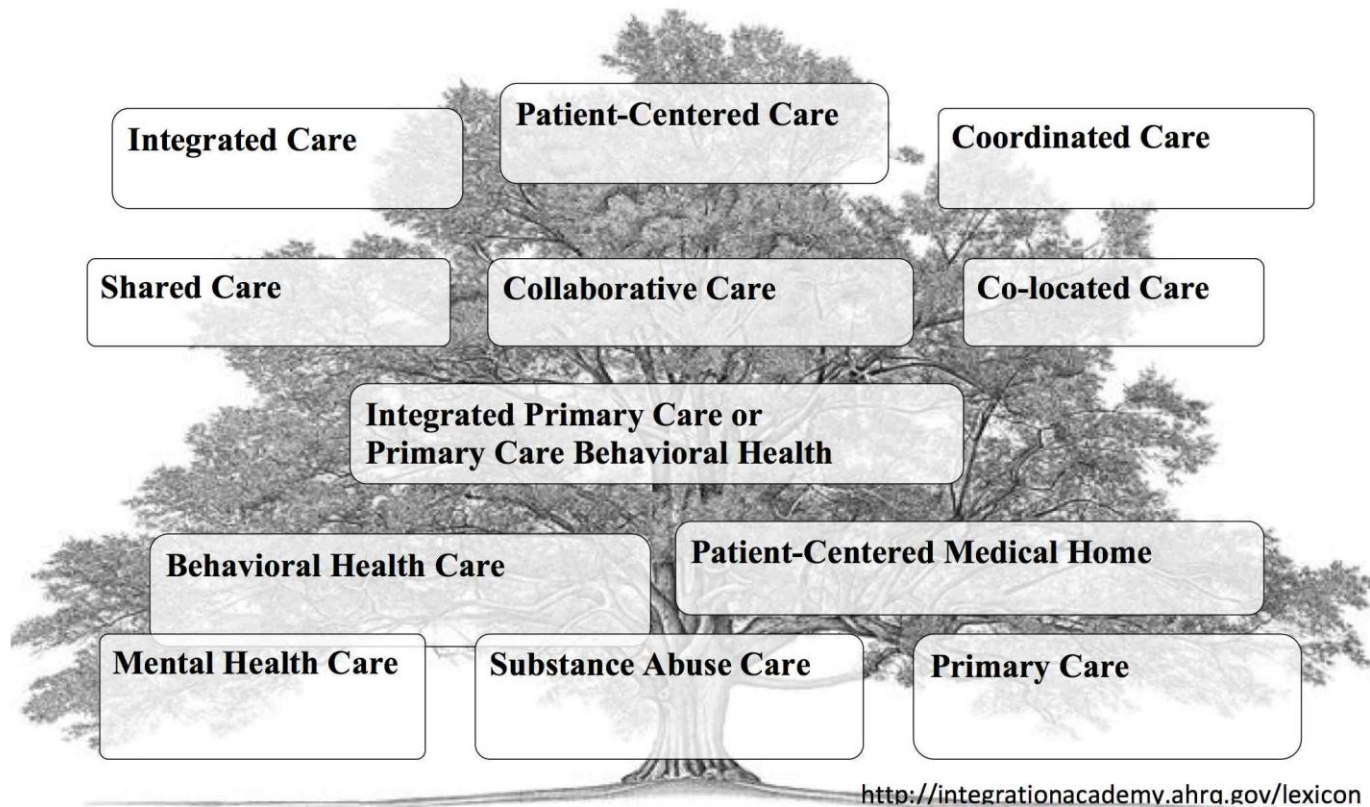


# Language



# Glossary: A Family Tree of Common Terms

Definitions and more complete glossary appear in full lexicon



# The Problem



Two-thirds of primary care physicians (N=6,660) reported not being able to access outpatient behavioral health for their patients.

50-90% of patients with “mental health” needs rely solely on their primary care physician (Brody, Khaliq, & Thompson, 1997)

Primary care has become the “de facto” mental health system (Regier et al, 1993)

“We have developed a health care system that is unable to deal with the varied roles that mind and body play in so-called physical illness.” (Levant, May, & Smith, 2006)

Cunningham, Health Affairs. 2009; 3:w490-w501.

Brody, D.S., Khaliq, A.A., & Thompson, T.L. (1997). Patients’ perspectives on the management of emotional distress in primary care settings. *Journal of Internal Medicine*, 12, 403-406.

Reiger, D. A., Narrow, W. E., Rac, D. S., Manderscheid, R. W., Locke, B., & Goodwin, F. (1993). The de facto US mental health and addictive disorders service system: Epidemiologic Catchment Area prospective. *Archives of General Psychiatry*, 50, 85-94.



# A Statement

*Mental health and primary care are inseparable; any attempts to separate the two leads to inferior care*

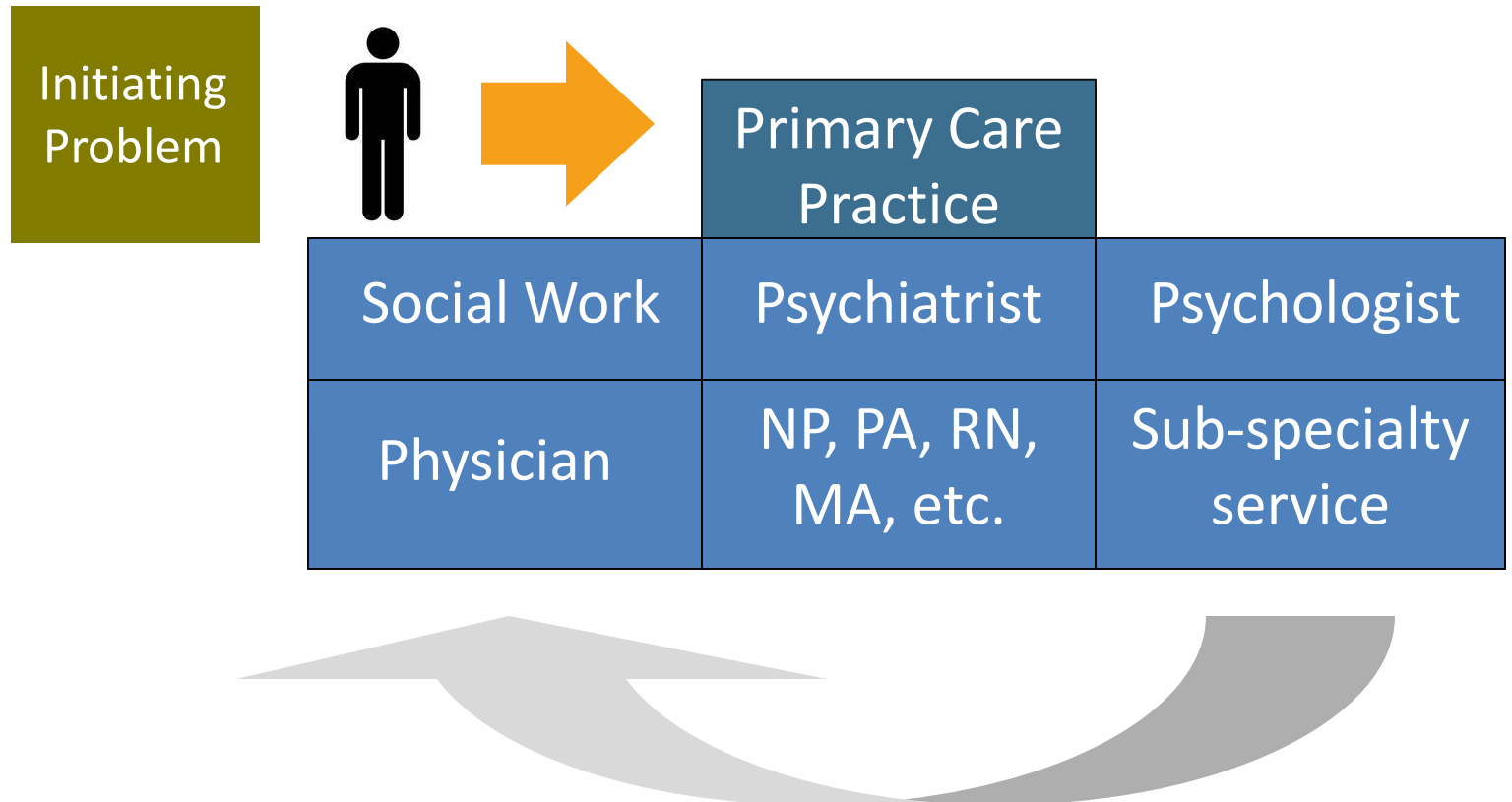
IOM, 1996



# The Vision

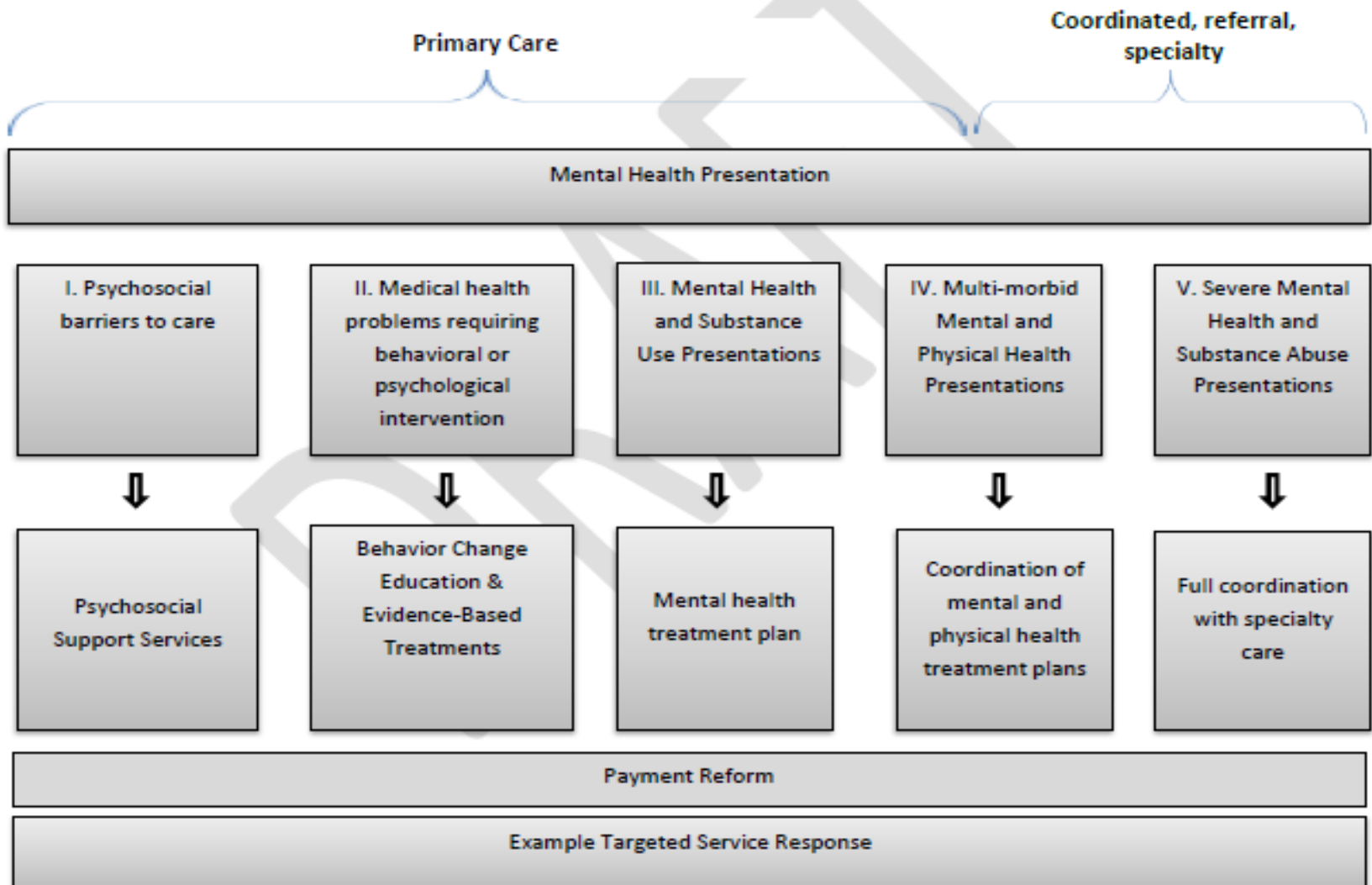


# Integrated





## A Range of Behavioral Health Presentations and Needs in Primary Care ©



For more information, please contact Carissa Kinman in the Department of Family Medicine at [carissa.kinman@ucdenver.edu](mailto:carissa.kinman@ucdenver.edu)



# Different Levels of Alignment

## No Alignment

- Referral-based
- Treating disease states separate (e.g. mental health/physical health)

## Partial Alignment

- Onsite part time
- Specialty mental health interventions

## Full Alignment

- Onsite full time
- Population-based
- Seamless
- Address the “range” of health presentations



# Alignment

## Clinical

## Operational

## Financial



# The Opportunity



# Project Management and Stakeholder Involvement

Michele Lueck

President and CEO

*Colorado Health Institute*



# Innovation Plan Stakeholder Advisory Group

Provider  
Track

Payer Track

Public  
Health  
Track

Specific  
Populations  
Track



# The Colorado Process

## Stakeholder Advisory

### Group:

Consensus on Overall Vision  
Major Strategies  
Drivers  
System Requirements

### Payers:

Components of Vision  
Model Design  
Scale and Agreement

### Providers:

Components of Vision  
Model Design  
How We Get There

### Public Health:

Components of Vision  
Integrate Population  
Health with Clinical Care

### Specific Populations:

Components of Vision  
Identifying Specific Needs  
Tailoring the System  
To Those Needs



## Stakeholder Advisory Group

- Three meetings by September, approve plan

## Smaller Targeted Groups

- Meetings as needed by July/August, recommendations for plan

## Innovation Plan

- Submit October 30



## Management Team

- Department of Health Care Policy and Financing
- Department of Family Medicine, University of Colorado
- Center for Improving Value in Health Care
- Colorado Health Institute





# Stakeholder Engagement is Critical

## Experts (You!) Will Help Shape the Plan

- It will evolve through a number of discussions

## Engagement Will Take Several Forms

- Feedback, comments, questions
- Smaller groups on the nuts and bolts
- Population research
- System capacity and readiness analysis
- Support: In-person, online
- Website: [ColoradoSIM.org](http://ColoradoSIM.org)



# What We Are Asking Of You

## Today

- Ask Questions
- Provide Input

## Between Meetings

- Think Creatively
- Provide Input

## Final Meeting

- Approve Model and Plan
- Engage in the Transformation
- Make it Happen!



# The Innovation Plan: Public Comment and Discussion

Edie Sonn

Vice President of Strategic Initiatives  
*Center for Improving Value in Health Care*



# Part One: Structured Dialogue



Build on Colorado's robust foundation of primary care and collaboration to create an integrated system of physical health, behavioral health, community prevention and clinical care.

**Right Track?**  
**Wrong Track?**



# Discussion: The Questions

- What will success look like five years from now?
- What barriers could impede our progress?
- What is your greatest hope for this project?
- What is your greatest fear about this process?



# Part Two: Open Mic



# Thank You for Joining Us in Transforming Colorado's Health Care System

**Stay in Contact:**

[ColoradoSIM.org](http://ColoradoSIM.org)

[ColoradoSIM@ColoradoHealthInstitute.org](mailto:ColoradoSIM@ColoradoHealthInstitute.org)

