



Highway to Health
Jefferson County



2015
COLORADO
HEALTH ACCESS
SURVEY

Health Insurance
Reaches
Record High
Jefferson Center for
Mental Health

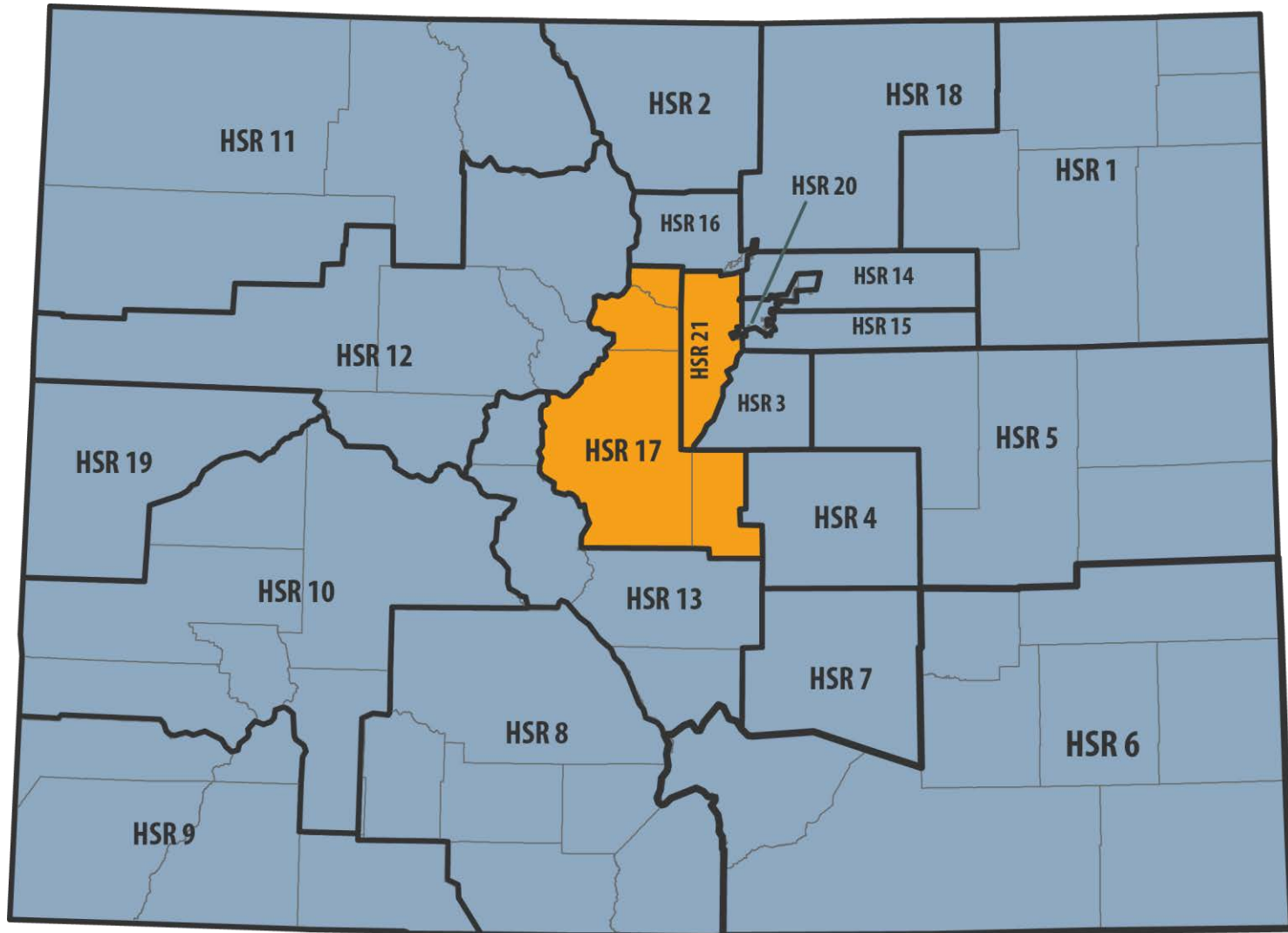
November 11, 2015



THE
COLORADO
TRUST



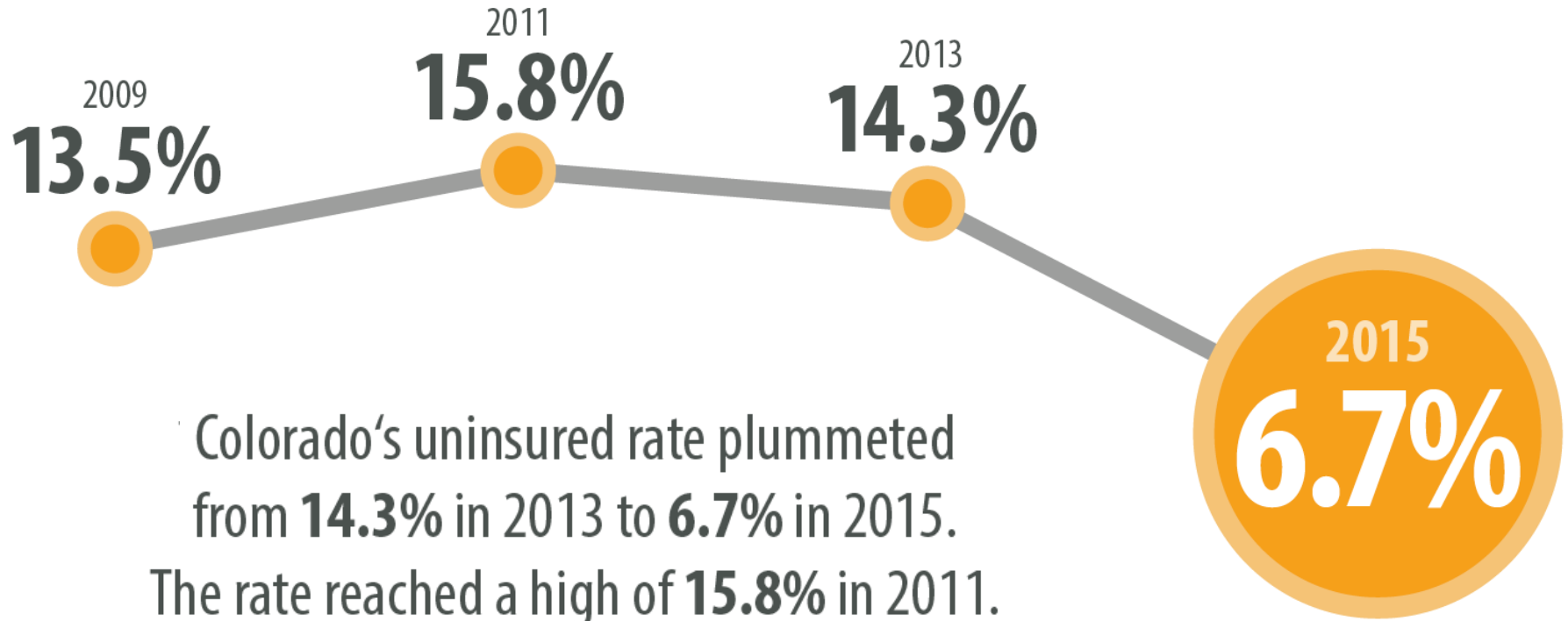
colorado health
INSTITUTE



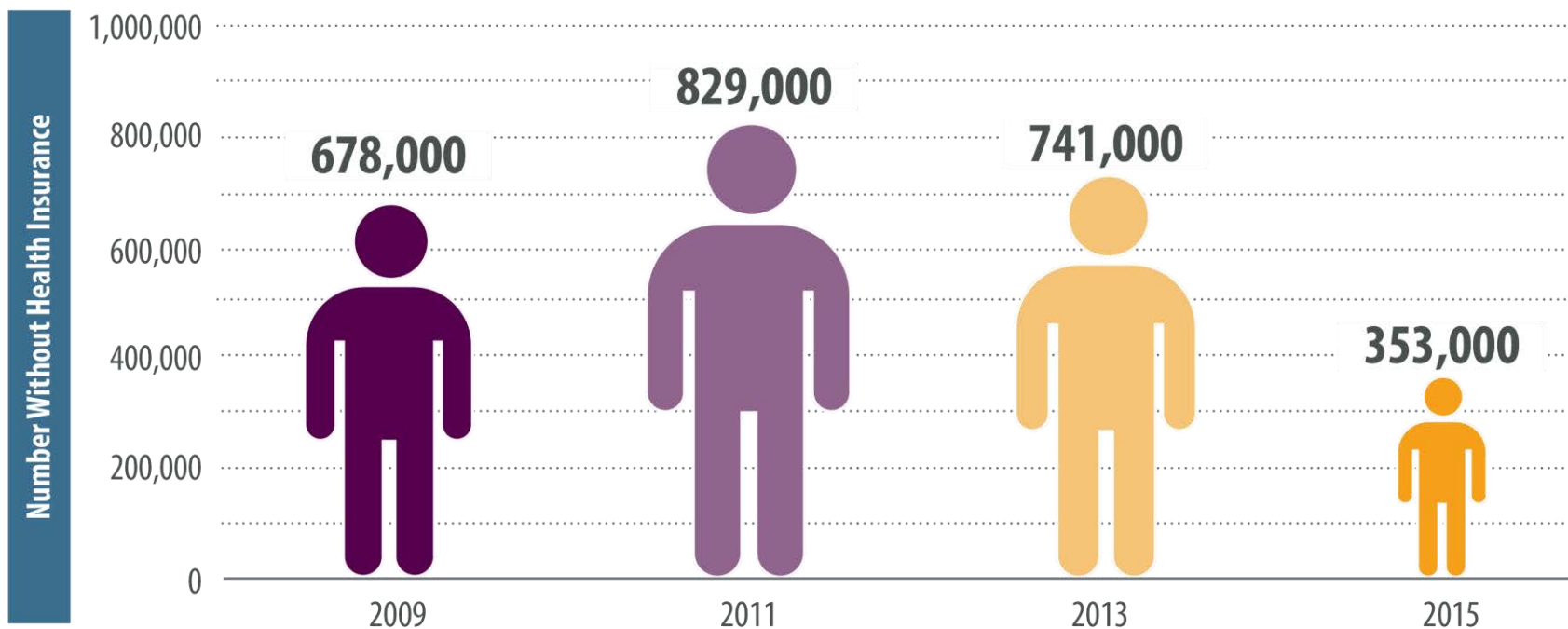
STORY **1**

Colorado Accomplished Its Coverage Goals

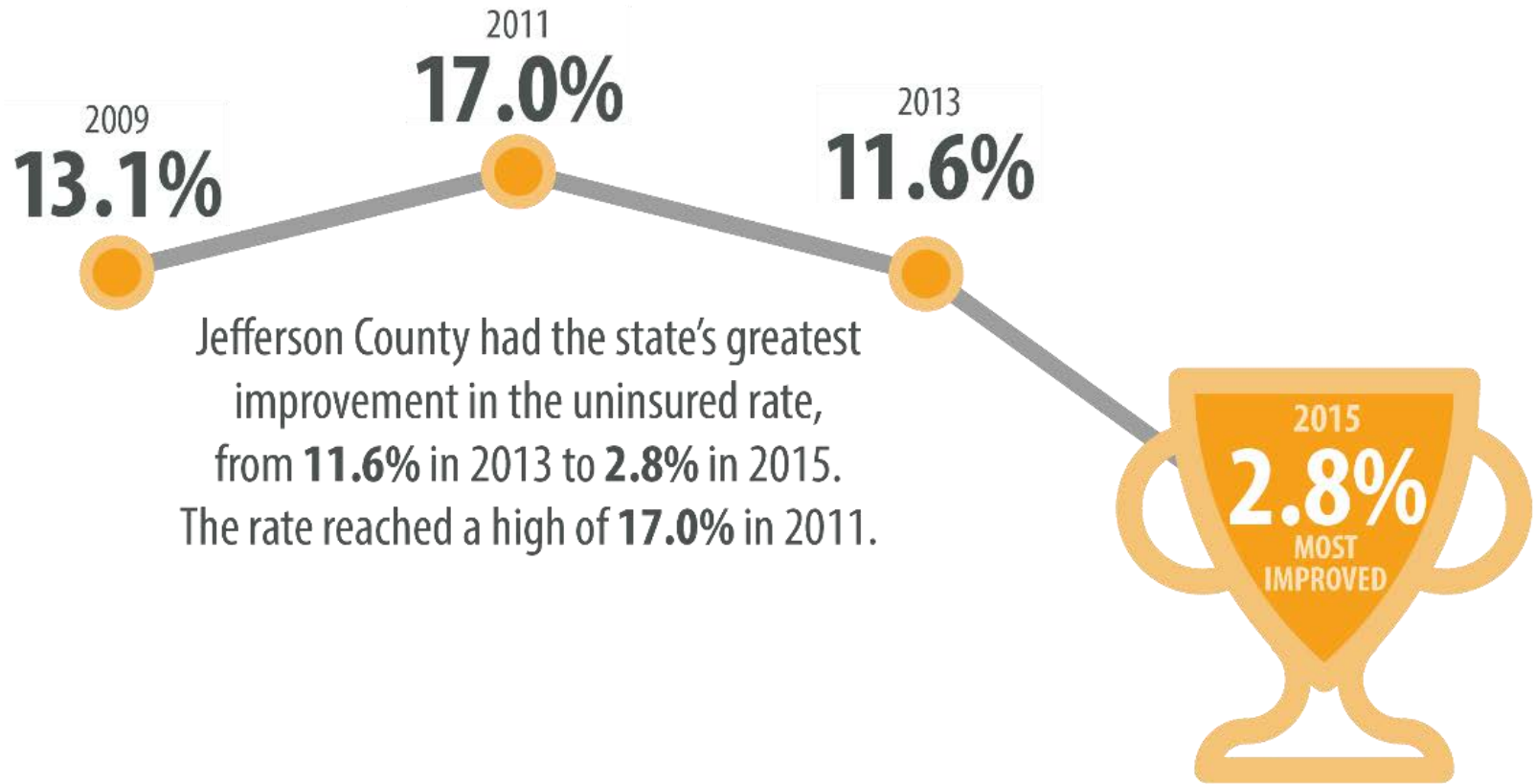
Colorado's Uninsured Rate: A New Low



Numbers of Uninsured Coloradans, 2009-2015



Jeffco's Uninsured Rate: A New Low

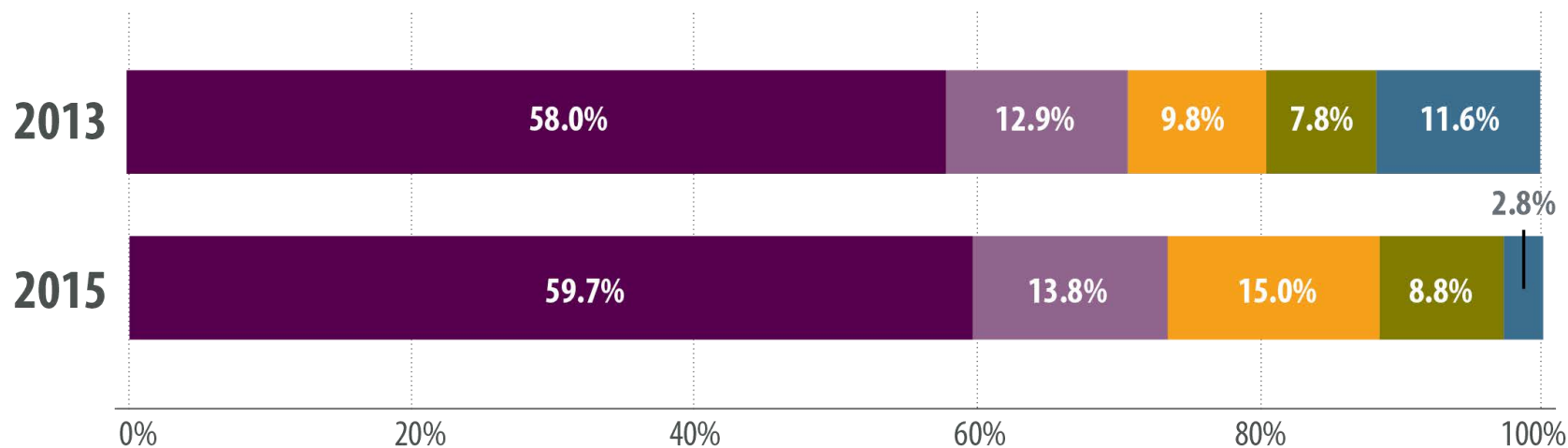


STORY **2**

The Drop in Uninsured is a Story of Medicaid Expansion

Gains in All Coverage Types

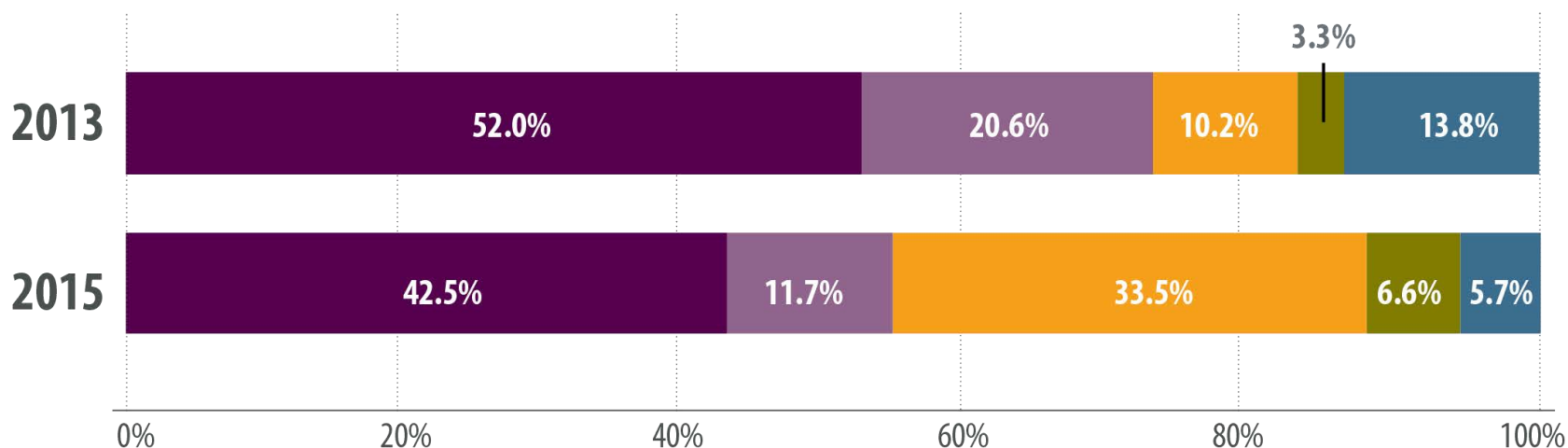
Changes in Health Insurance Coverage, All Ages, Jefferson County, 2013-2015



- Employer-Sponsored
 Medicare
 Medicaid/Child Health Plan *Plus* (CHP+)
 Individual Market (Including Connect for Health Colorado)
 Uninsured

Private Coverage Falls, Medicaid Surges

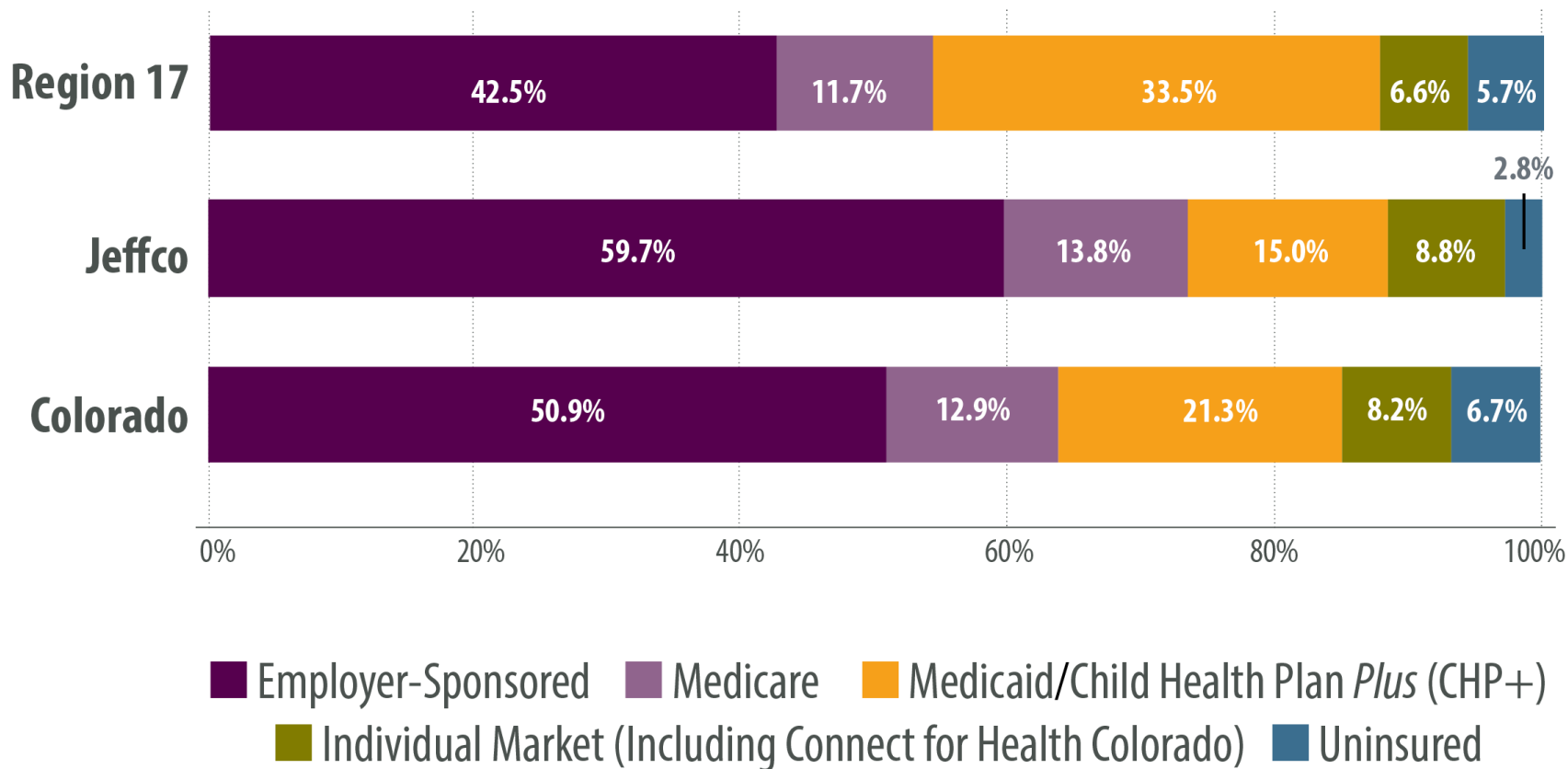
Changes in Health Insurance Coverage, All Ages, Region 17, 2013-2015



■ Employer-Sponsored
 ■ Medicare
 ■ Medicaid/Child Health Plan *Plus* (CHP+)
 ■ Individual Market (Including Connect for Health Colorado)
 ■ Uninsured

Private Coverage Prominent in Jeffco

Difference in Insurance Coverage Between Jefferson County and Colorado, 2015



STORY **3**

Barriers to Mental Health Care Have Shifted

Mental Health in Region 17 and Jeffco



If you did not get needed mental health care over the past 12 months, why?

All that apply

	2013		2015
You were concerned about the cost of treatment	75.6%	↓	57.3%
You did not think your health insurance would cover it*	55.3%	↓	43.3%
You were uninsured**	77.5%	↓	65.2%
You did not feel comfortable talking about personal problems with a health professional	31.0%	↑	40.2%
You were concerned about what would happen if someone found out you had a problem	19.8%	↑	27.6%
You had a hard time getting an appointment	30.5%	↑	34.0%

* Asked of those insured during the past year ** Asked of uninsured during the past year

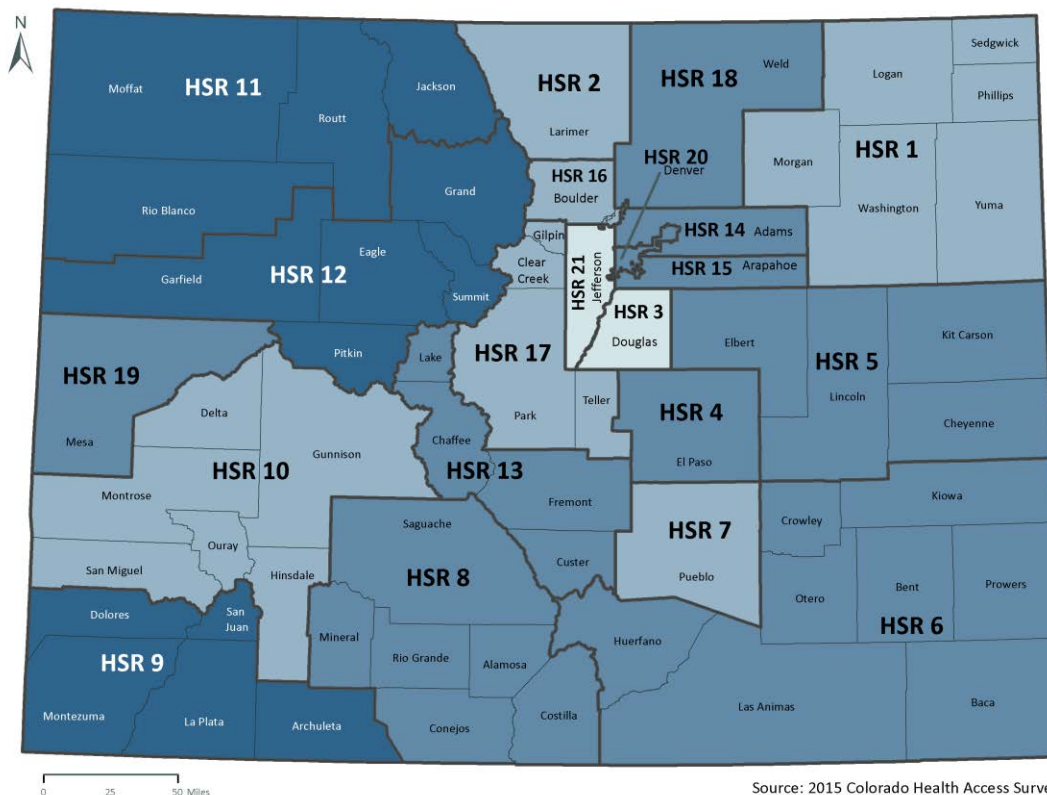
STORY

4

Coverage Shifts Mirror Existing Disparities

Regional Disparities in Uninsurance

Uninsured Rate by Health Statistics Region, 2015



Percentage Who Are Uninsured

At or Below Average:

2.4% - 3.0% 3.1% - 6.7%

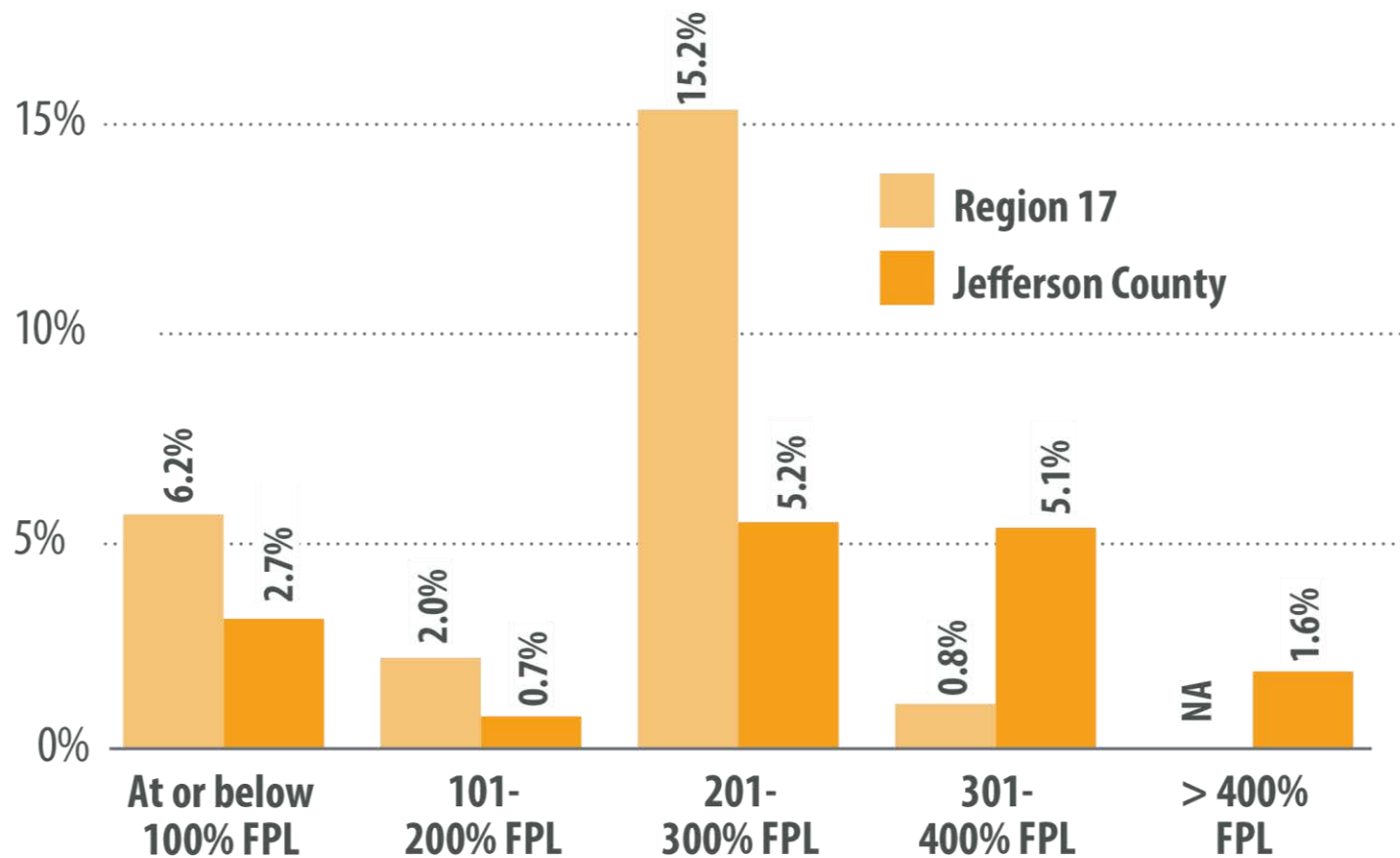
Colorado Average:
6.7%

Above Average:

6.8% - 9.5% 9.6% - 13.0%

A Spike in the Middle

Uninsured Rates in Region 17 and Jeffco by Federal Poverty Level, 2015



got insurance?



Rob, Zach, & Sam
Bros for Life

Brosurance

Keg stands are crazy.
Not having health insurance is crazier.
Don't tap into your beer money
to cover those medical bills.
We got it covered.

Now you can too.

thanks
obamacare!



#GotInsurance
doyougotinsurance.com

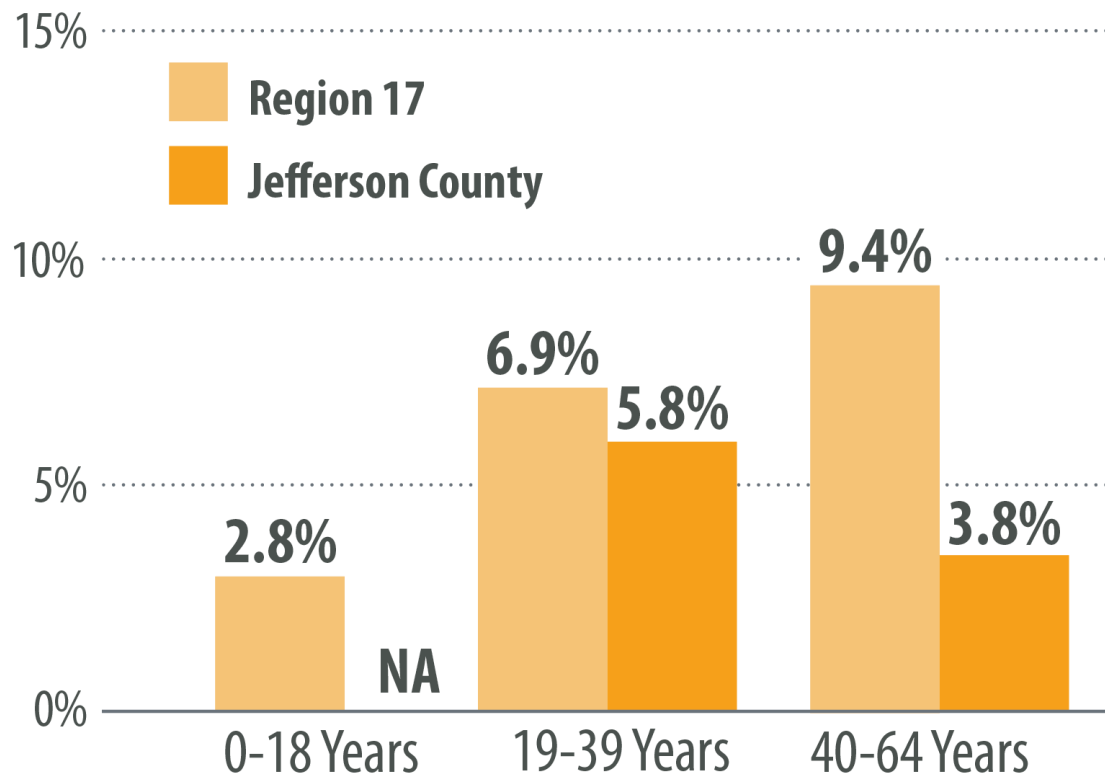
STORY 5

Kids Coverage is a Bright Spot



The Kids Are All Right

Uninsured Rates by Age, Region 17 and Jeffco, 2015



STORY 6

Cost: The Top Reason for Lack of Insurance in Both Regions



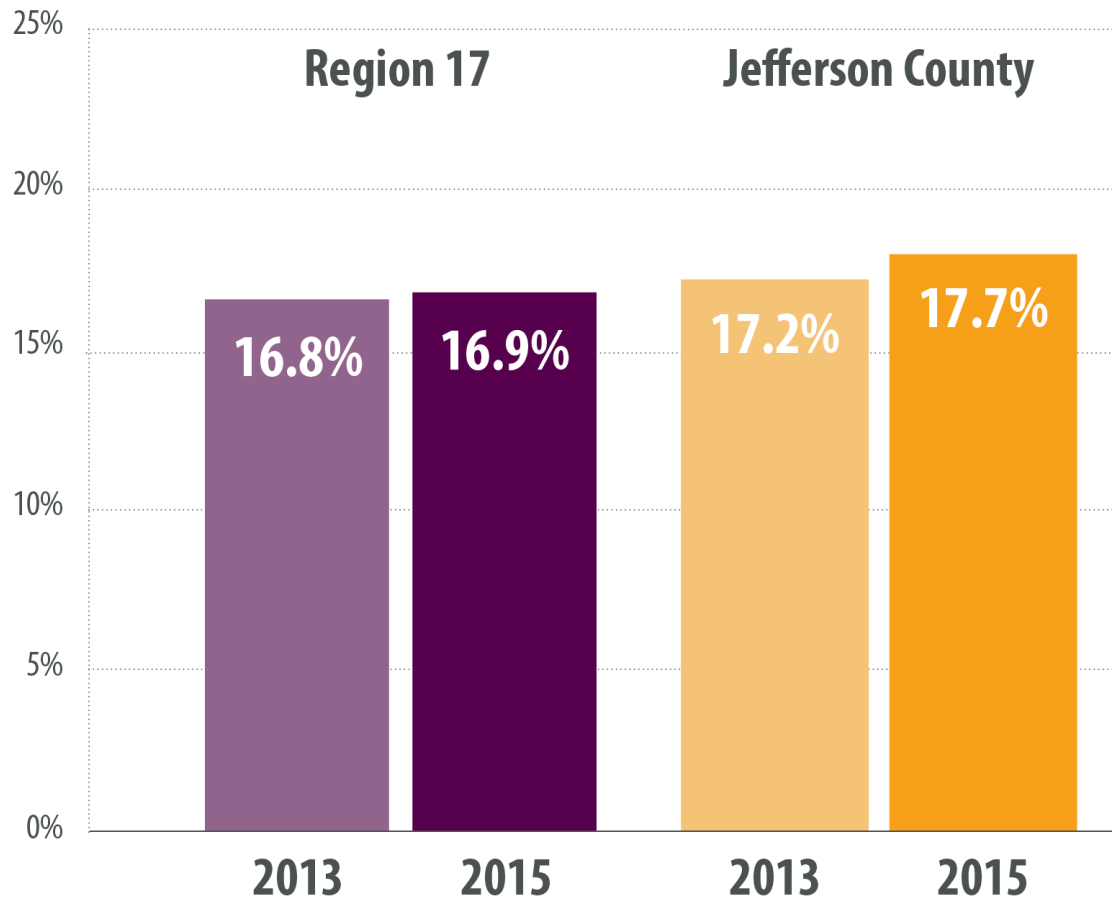
96.6%
of the Uninsured in Region 17 Cite Cost

STORY

7

Underinsurance Held Steady in Both Regions, But Climbed Statewide

Underinsured

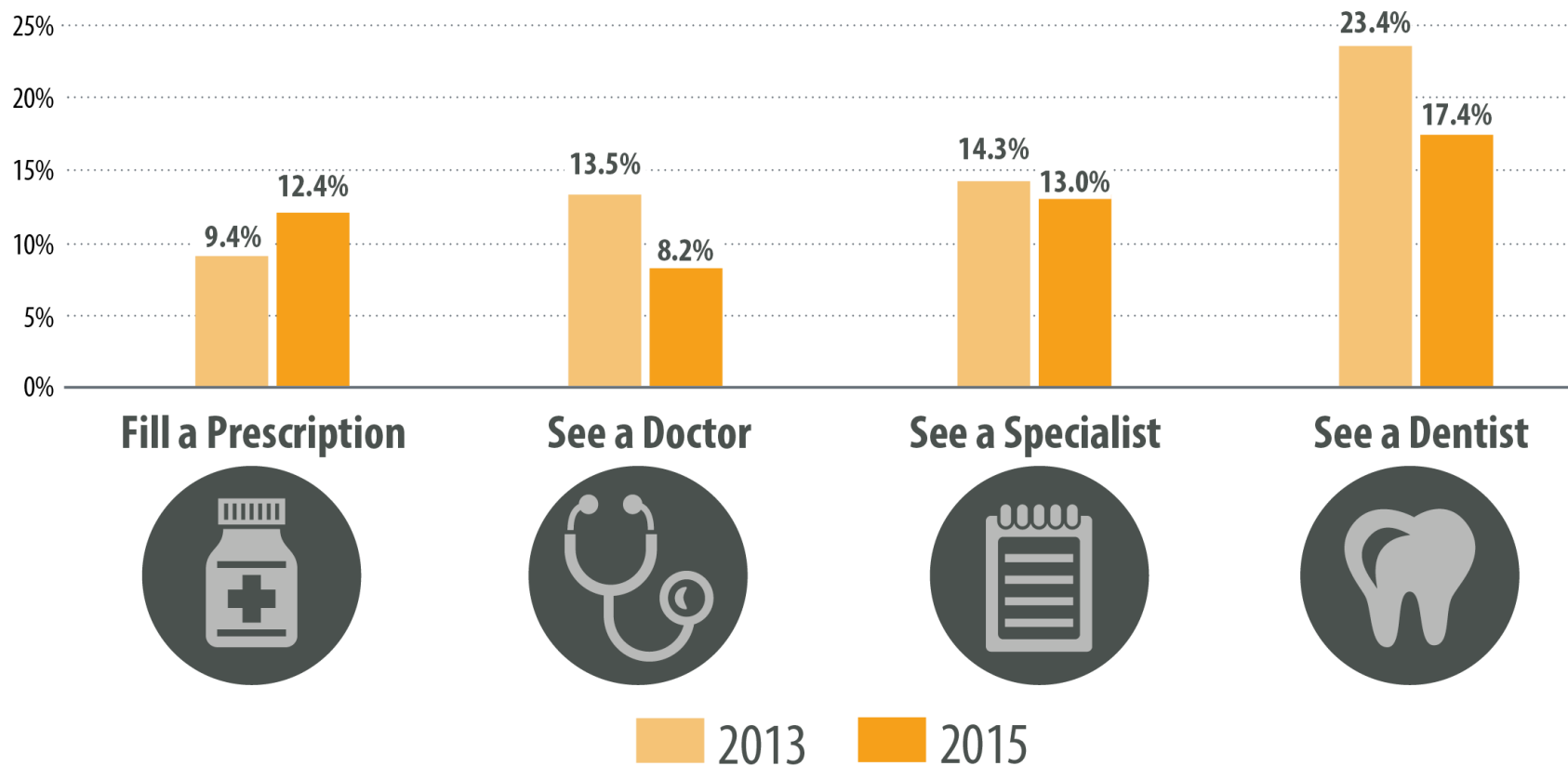


STORY 8

Fewer Skipping Care Because of Cost

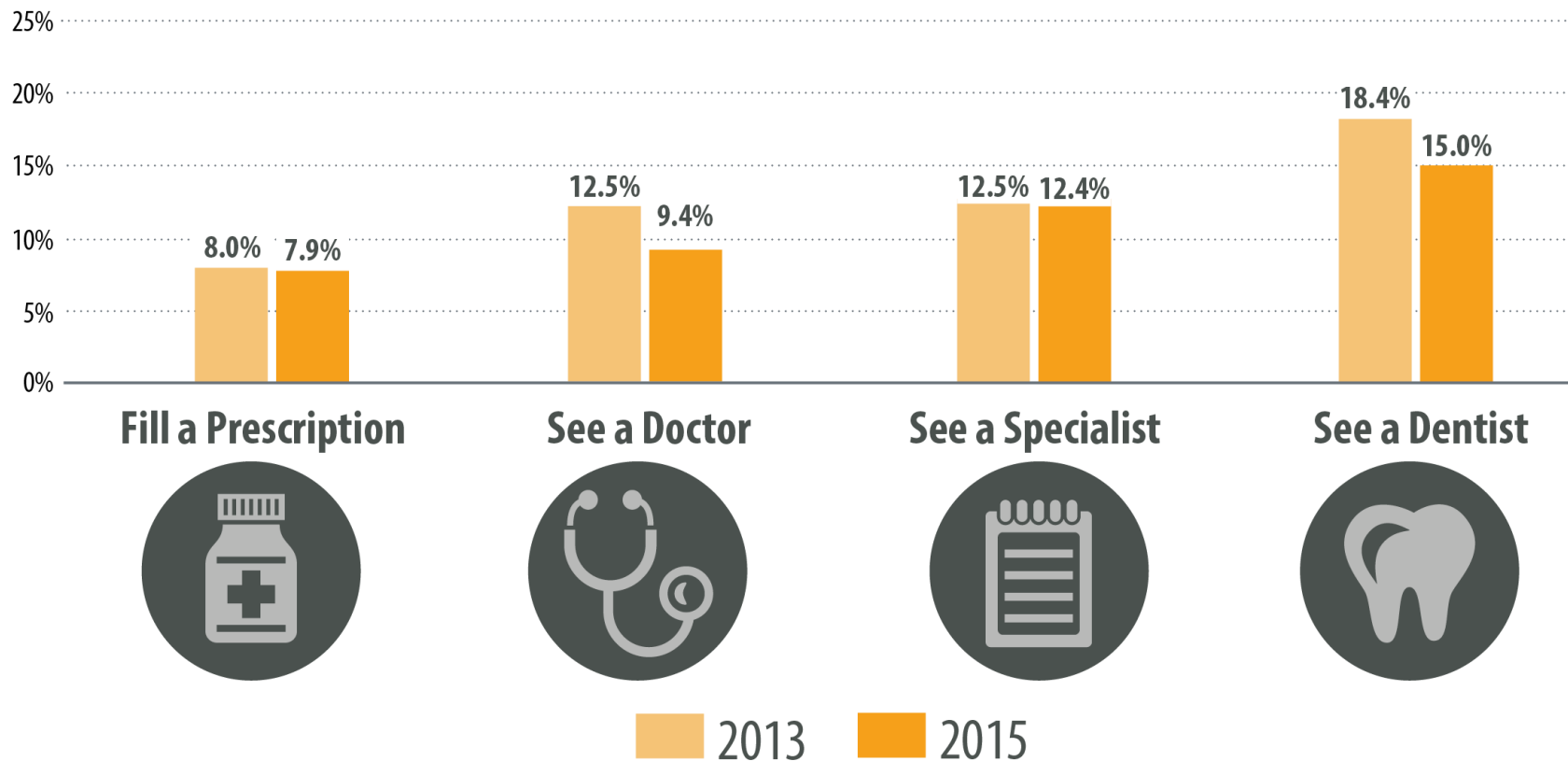
Skipping Care Because of Cost, 2013-2015

Percentage of Region 17 Residents in the Past Year Who Did Not ...



Skipping Care Because of Cost, 2013-2015

Percentage of Jefferson County Residents in the Past Year Who Did Not ...

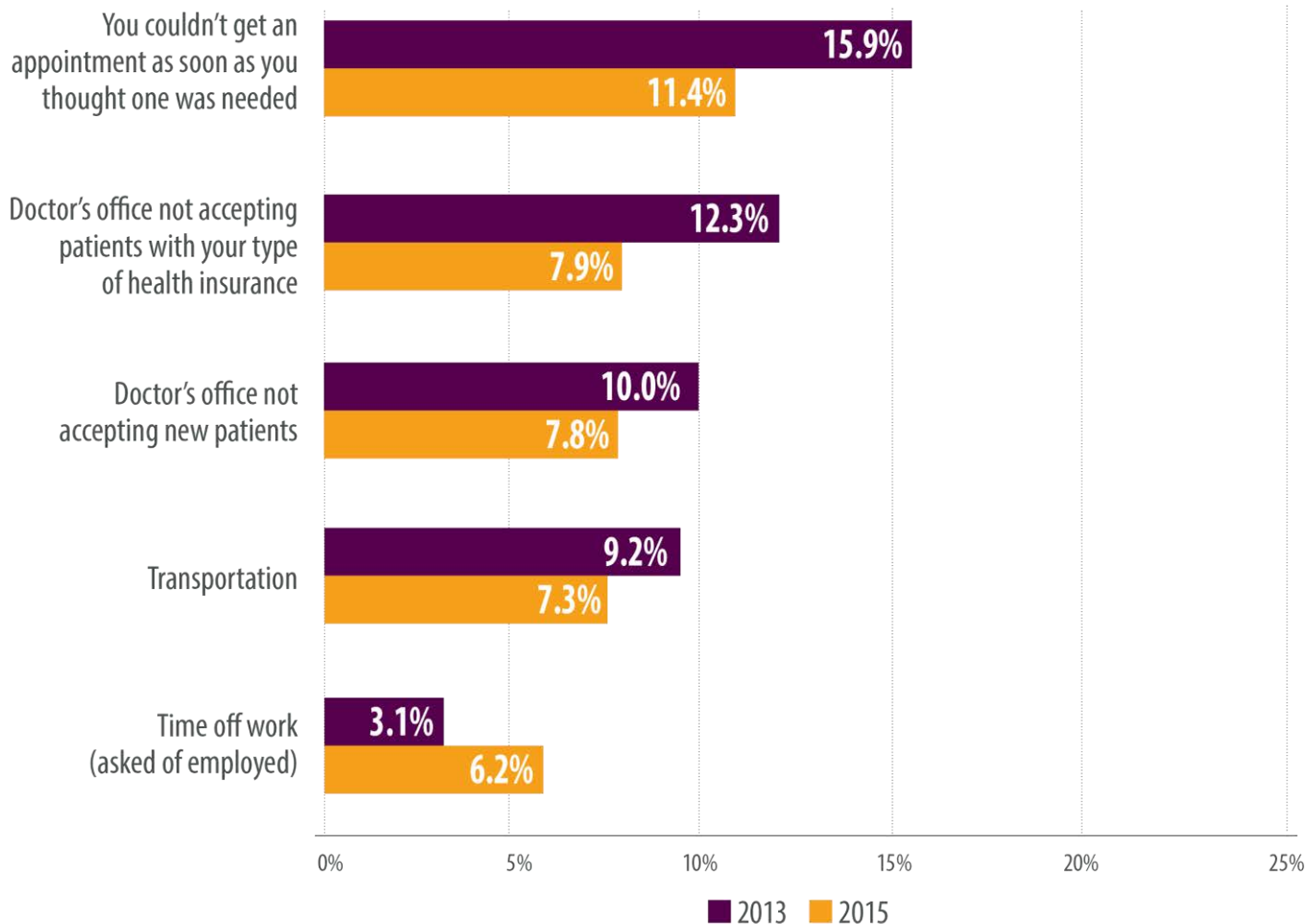


STORY 9

Gains in Coverage Have Mixed Results for Access to Care

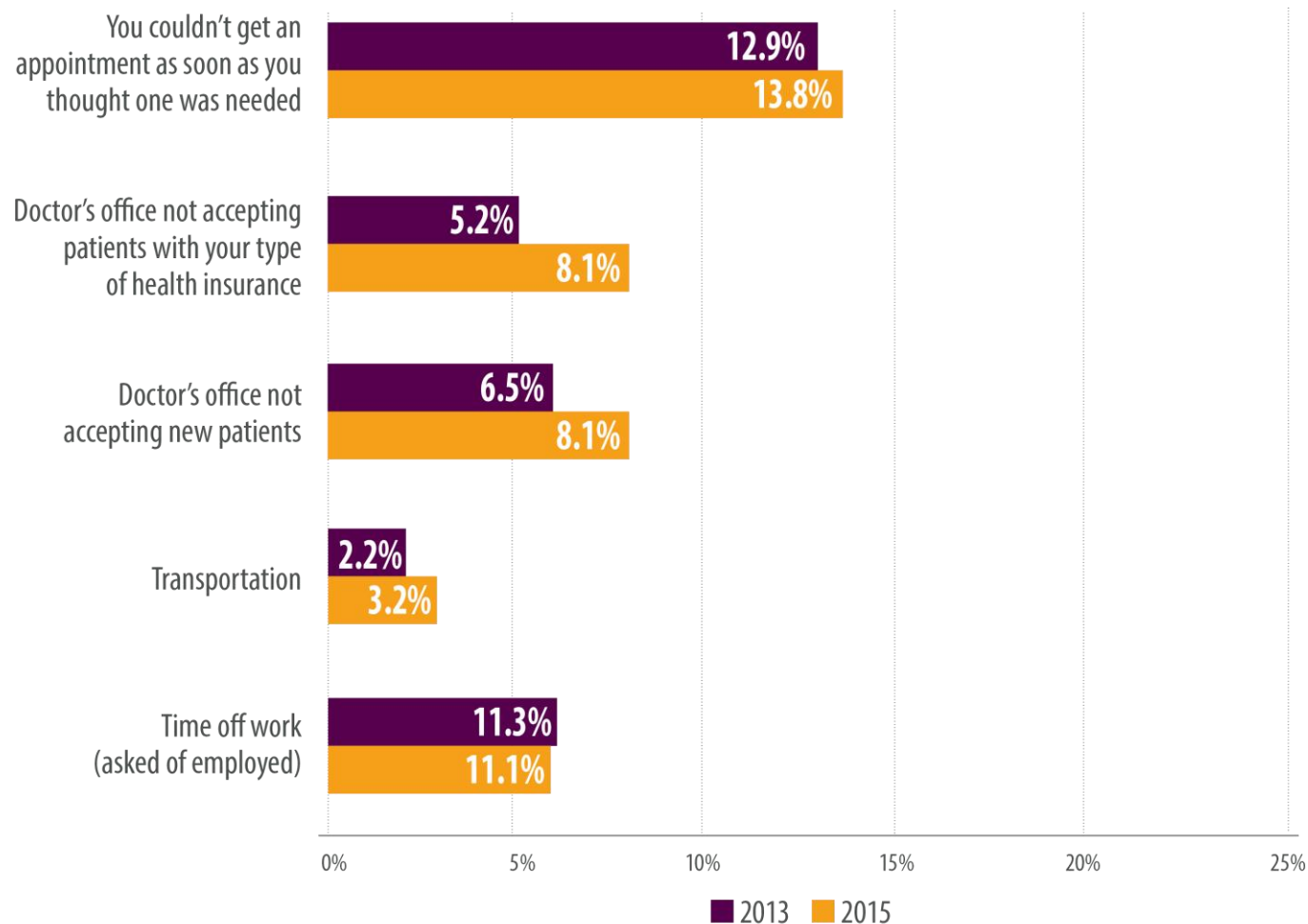
In the Past year, You Did Not Get Care Because ...

Region 17, 2013-2015



In the Past year, You Did Not Get Care Because ...

Jefferson County, 2013-2015



COLORADO ACCESS TO CARE INDEX

Health Statistics Region 17

Clear Creek, Gilpin, Park and Teller Counties

Overall Index Score
7.1
Out of 10

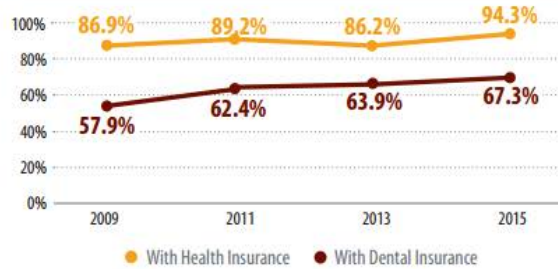


Potential Access

Index Score **5.4**

Adequate insurance coverage and enough local care providers make it more likely that people will get care when they need it.

With Insurance, 2009-2015



Health Care Workforce

*Per 1,000 Residents
2013 Data



Underinsured Coloradans

Percentage of Population

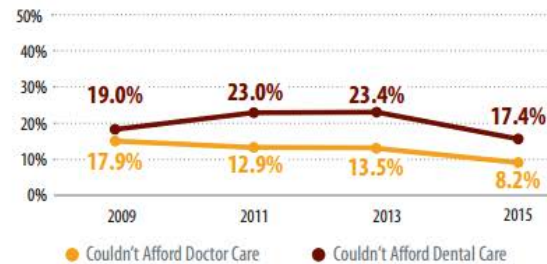


Barriers to Care

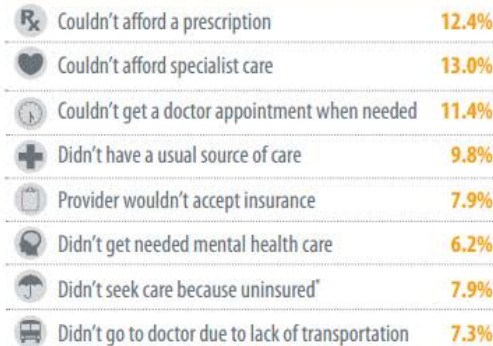
Index Score **9.1**

But many obstacles make it hard for people to get health care – even if they have insurance.

Couldn't Afford Medical or Dental Care in Past 12 Months, 2009-2015



In Past 12 Months ...



*Only includes those who were uninsured at some point in the past 12 months.

Realized Access

Index Score **6.7**

When people obtain preventive services, it's a good indication they have access to care. But hospitalizations or emergency room visits may indicate inadequate access.

Preventive Care

Well-child visits in the past year for those under 19 years

2011 2013 2015
83.6% 83.3% 84.9%

Received prenatal care in first trimester **98.9%**

Pap test in the past three years for women aged 18+ **55.4%**

Mammogram in the past two years for women aged 50+ **57.3%**

Colonoscopy or sigmoidoscopy at any time for people aged 50+ **65.2%**

Visited a dentist or dental hygienist in past year, all ages

2011 2013 2015
62.3% 56.1% 64.8%

Avoidable Care

Of those who went to the ER, went for a condition that could have been treated by a regular doctor

22.5%

Hospitalized for uncontrolled diabetes, adults aged 18+

RATE PER 100,000

0.0*

Hospitalized for asthma, adults aged 18-39

RATE PER 100,000

48.8*

Updated October 2015 • Data source details available at ColoradoHealthInstitute.org/COAccessIndex • *2013 data

COLORADO ACCESS TO CARE INDEX

Health Statistics Region 21

Jefferson County

Overall Index Score
8.1
Out of 10

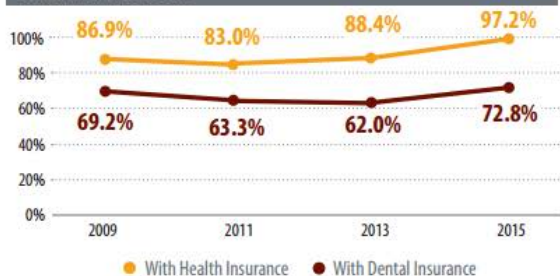


Potential Access

Index Score **7.6**

Adequate insurance coverage and enough local care providers make it more likely that people will get care when they need it.

With Insurance, 2009-2015



Health Care Workforce

*Per 1,000 Residents
2013 Data

Primary Care Doctors **0.6**

Dentists **0.6**

Psychiatrists **0.1**

Underinsured Coloradans

Percentage of Population

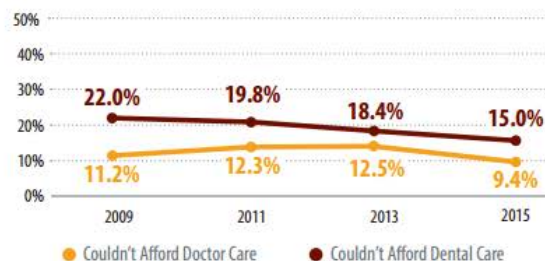


Barriers to Care

Index Score **9.1**

But many obstacles make it hard for people to get health care – even if they have insurance.

Couldn't Afford Medical or Dental Care in Past 12 Months, 2009-2015



In Past 12 Months ...



*Only includes those who were uninsured at some point in the past 12 months.

Realized Access

Index Score **7.6**

When people obtain preventive services, it's a good indication they have access to care. But hospitalizations or emergency room visits may indicate inadequate access.

Preventive Care

Well-child visits in the past year for those under 19 years

2011 2013 2015
72.8% **77.2%** **85.8%**

Received prenatal care in first trimester **91.3%**

Pap test in the past three years for women aged 18+ **79.0%**

Mammogram in the past two years for women aged 50+ **72.3%**

Colonoscopy or sigmoidoscopy at any time for people aged 50+ **69.9%**

Visited a dentist or dental hygienist in past year, all ages

2011 2013 2015
70.5% **65.6%** **75.6%**

Available Care

Of those who went to the ER, went for a condition that could have been treated by a regular doctor

31.8%

Hospitalized for uncontrolled diabetes, adults aged 18+
RATE PER 100,000

2.1*

Hospitalized for asthma, adults aged 18-39
RATE PER 100,000

17.9*

Updated October 2015 - Data source details available at ColoradoHealthInstitute.org/COAccessIndex - *2013 data

STORY

10

Consumer Engagement is a Mixed Bag

Health Coverage Literacy

Region 17 and Jeffco adults who feel confident in understanding each insurance term

HSR 17 90.0%

JEFFCO 91.4%

Premium

92.3%

94.2%

Deductible

92.1%

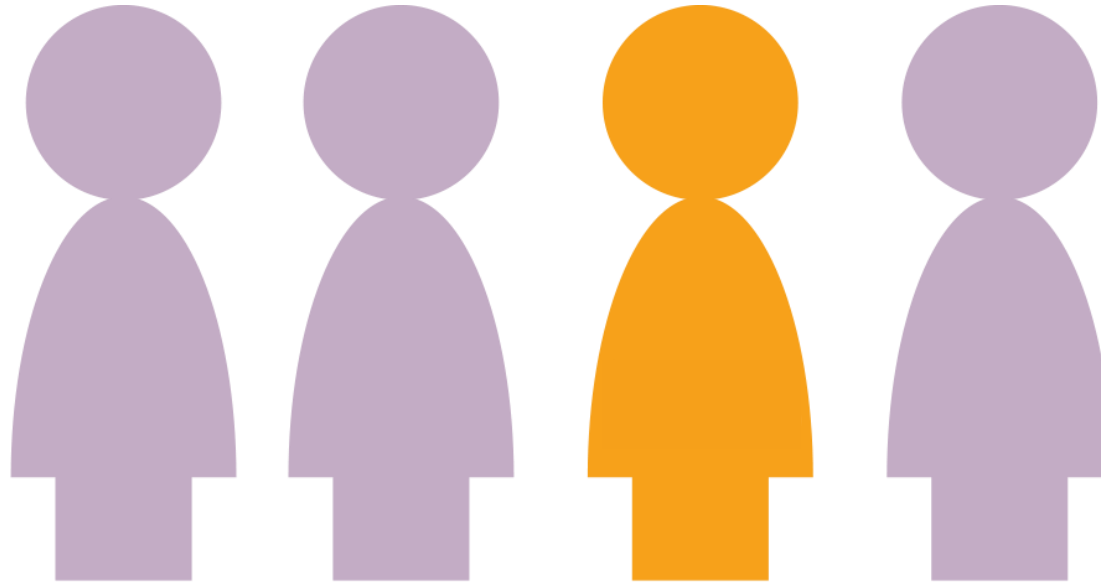
94.9%

Copayment

74.0%

67.9%

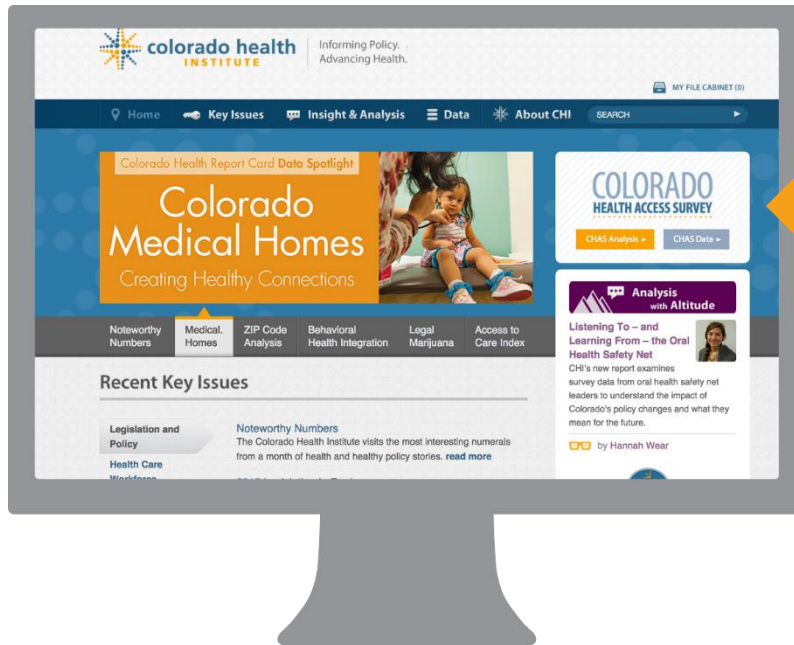
Co-insurance



One of four insured Coloradans say they are unlikely to check if a doctor is in-network before getting care.

CHAS Data Can Help You ...

- Adapt to the changing health care landscape
- Identify opportunities for improving health
- Measure effectiveness of reform in your community



Online
Coloradohealth
institute.org

Email data requests to
CHAS@coloradohealthinstitute.org

 **#2015CHAS**

COLORADO HEALTH ACCESS SURVEY



Need more information?

Email chas@coloradohealthinstitute.org **Online** coloradohealthinstitute.org

CHAS: How It Was Fielded



Who: 10,136 randomly selected households



What: Twenty-minute telephone survey



When: Between March 2 and June 26, 2015



Where: Statewide, divided among 21 Health Statistics Regions



Why: To gather information that can inform policy-making and help measure health reform efforts