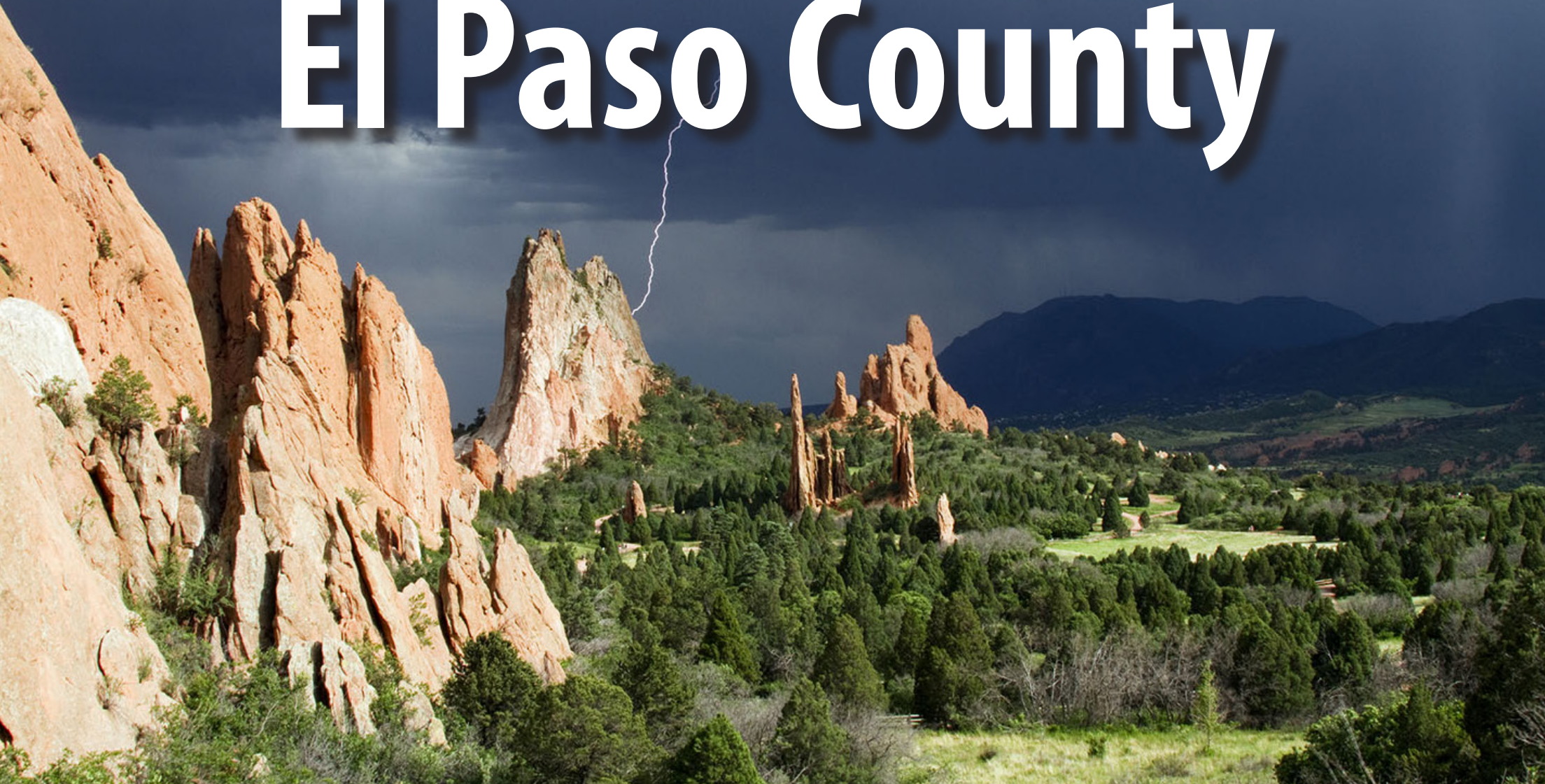


Highway to Health El Paso County





2015
COLORADO
HEALTH ACCESS
SURVEY

Health Insurance
Reaches
Record High

November 24, 2015



THE
COLORADO
TRUST

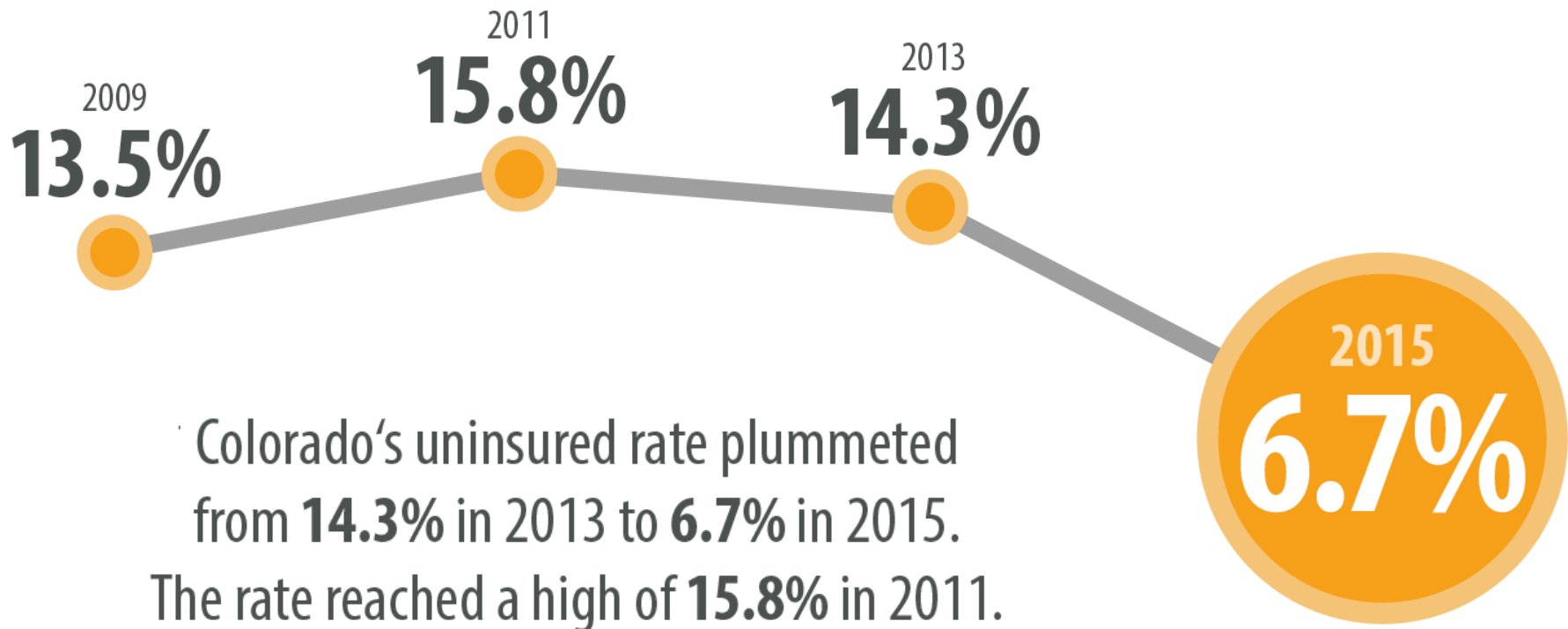


colorado health
INSTITUTE

STORY **1**

Colorado – and El Paso County – Accomplished Their Coverage Goals

Colorado's Uninsured Rate: A New Low



Colorado's uninsured rate plummeted from **14.3%** in 2013 to **6.7%** in 2015. The rate reached a high of **15.8%** in 2011.

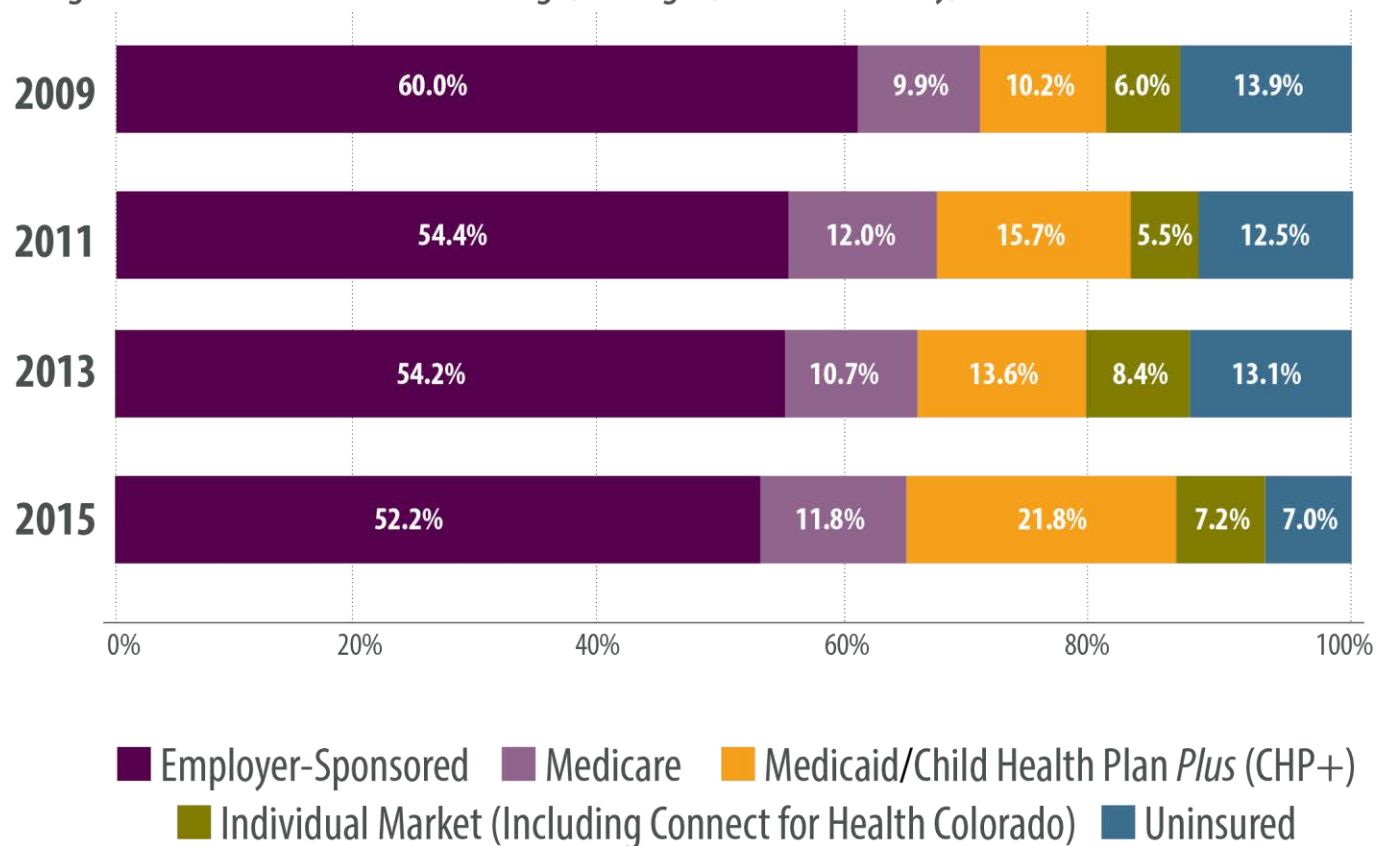


STORY **2**

The Drop in Uninsured is a Story of Medicaid Expansion

Uninsured Rate Falls, Medicaid Surges

Changes in Health Insurance Coverage, All Ages, El Paso County, 2013-2015

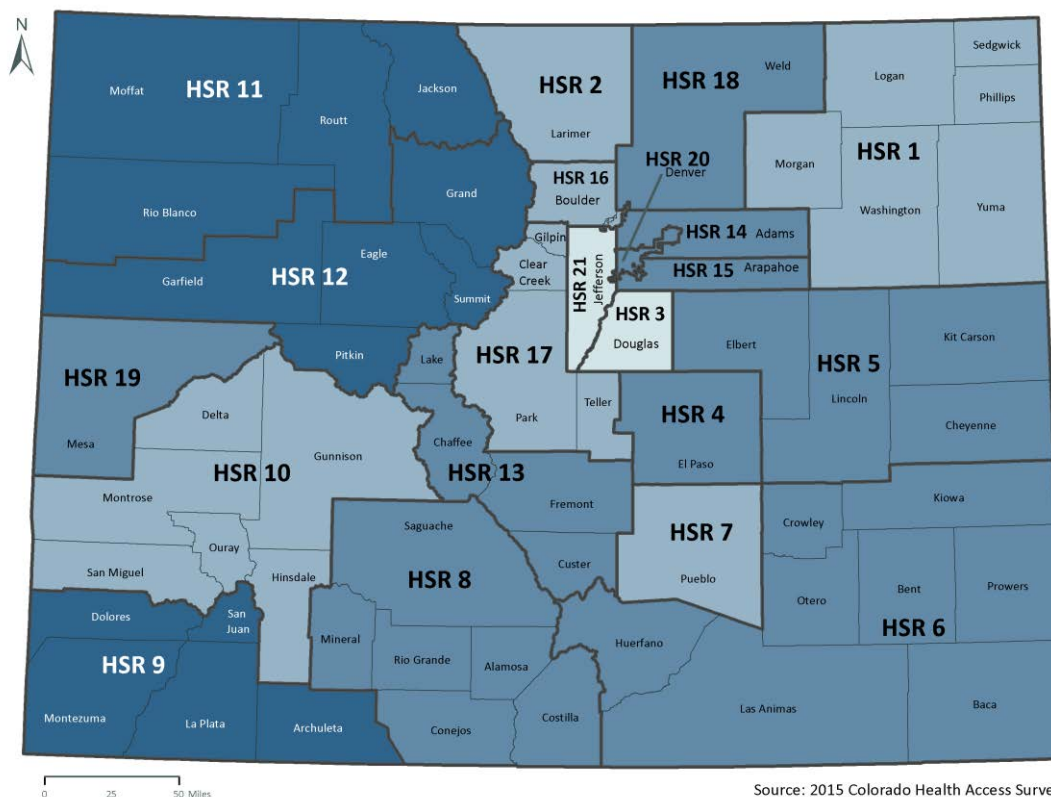


STORY **3**

Coverage Shifts Mirror Existing Disparities

Regional Disparities in Uninsurance

Uninsured Rate by Health Statistics Region, 2015



Percentage Who Are Uninsured

At or Below Average:



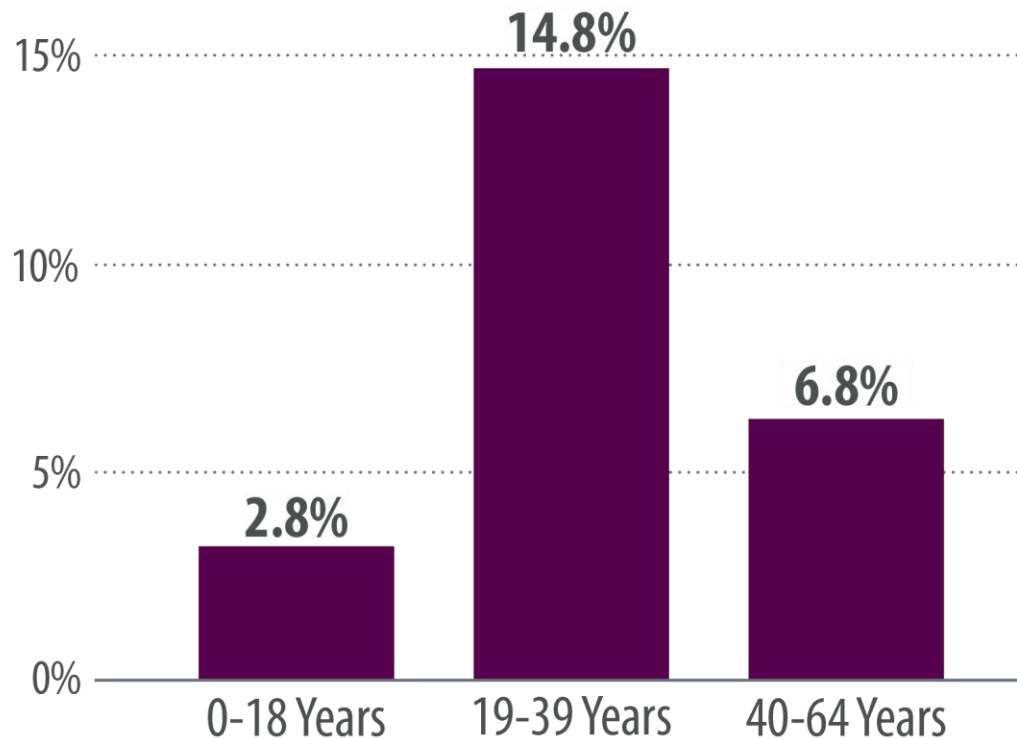
Colorado Average:
6.7%

Above Average:



Young Adults Most Likely to be Uninsured

Uninsured Rates by Age, El Paso County, 2015



STORY

4

Kids Coverage is a Bright Spot

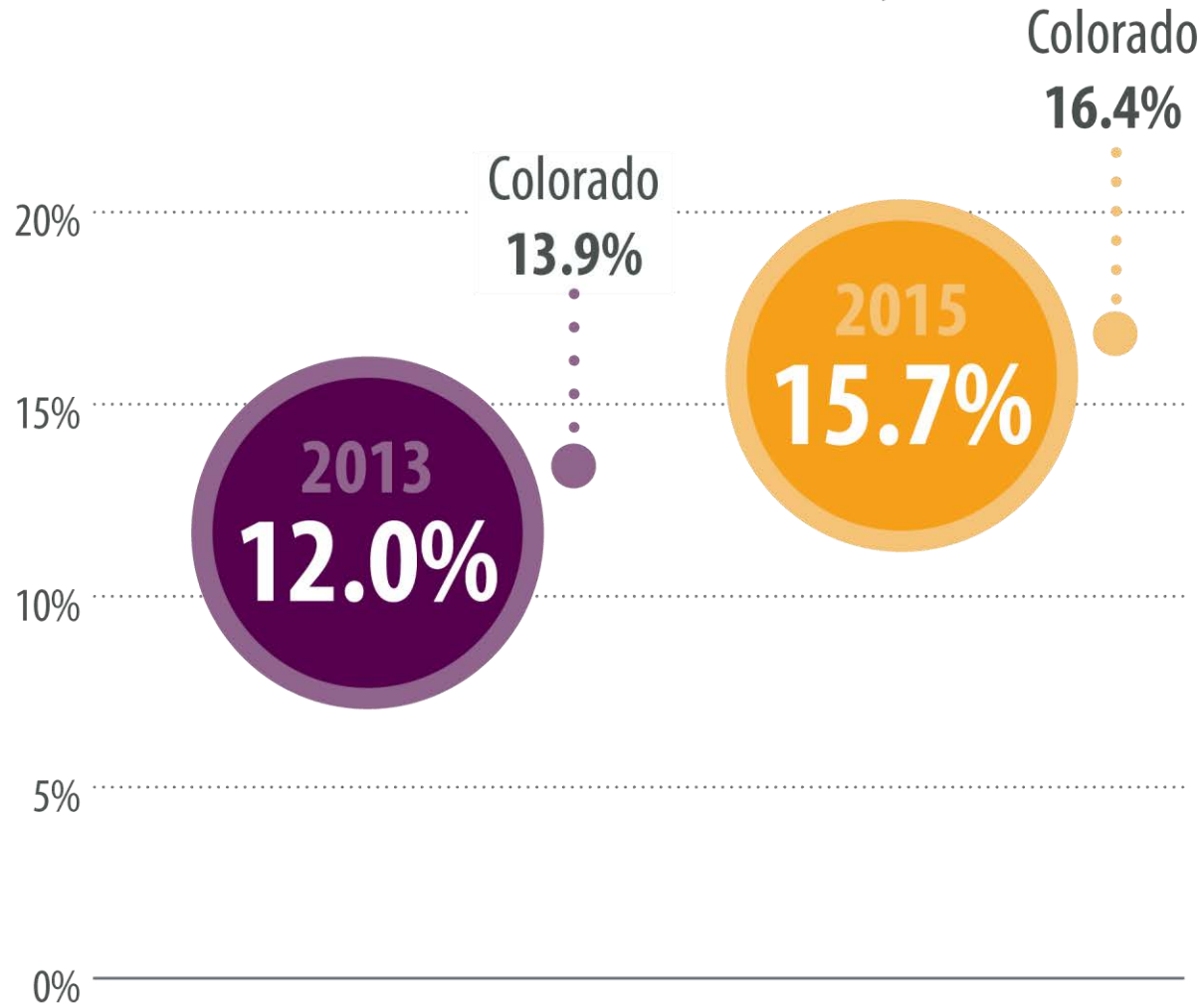


STORY

5

Uninsurance is Down, But Underinsurance is Up

Underinsurance in El Paso County



STORY

6

Cost: The Main Reason for Lack of Insurance in El Paso County



85%
of the Uninsured in Region 4 Cite Cost

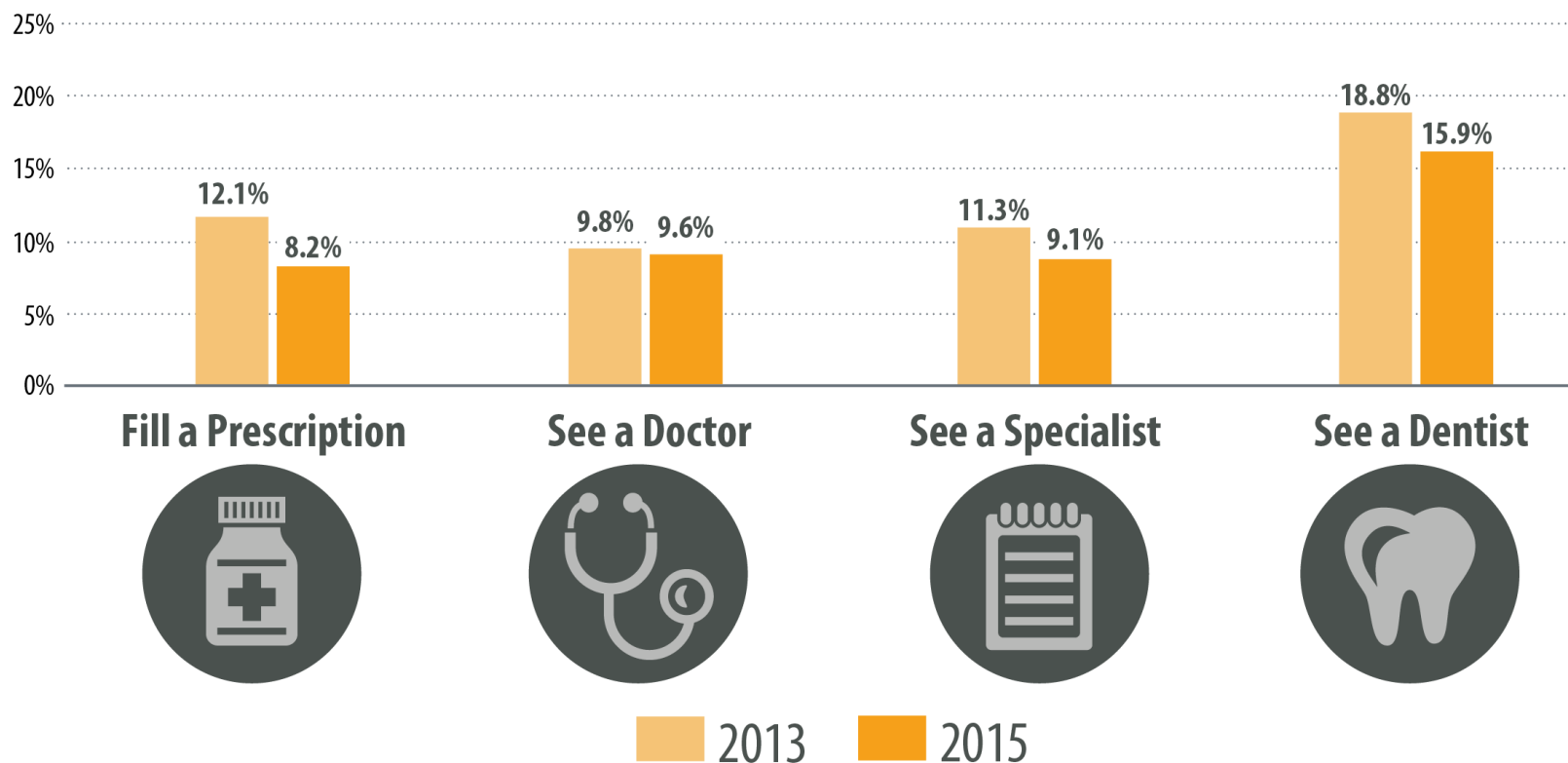
STORY

7

Skipping Care Because of Cost? Not So Much.

Skipping Care Because of Cost, 2013-2015

Percentage of El Paso County Residents in the Past Year Who Did Not ...

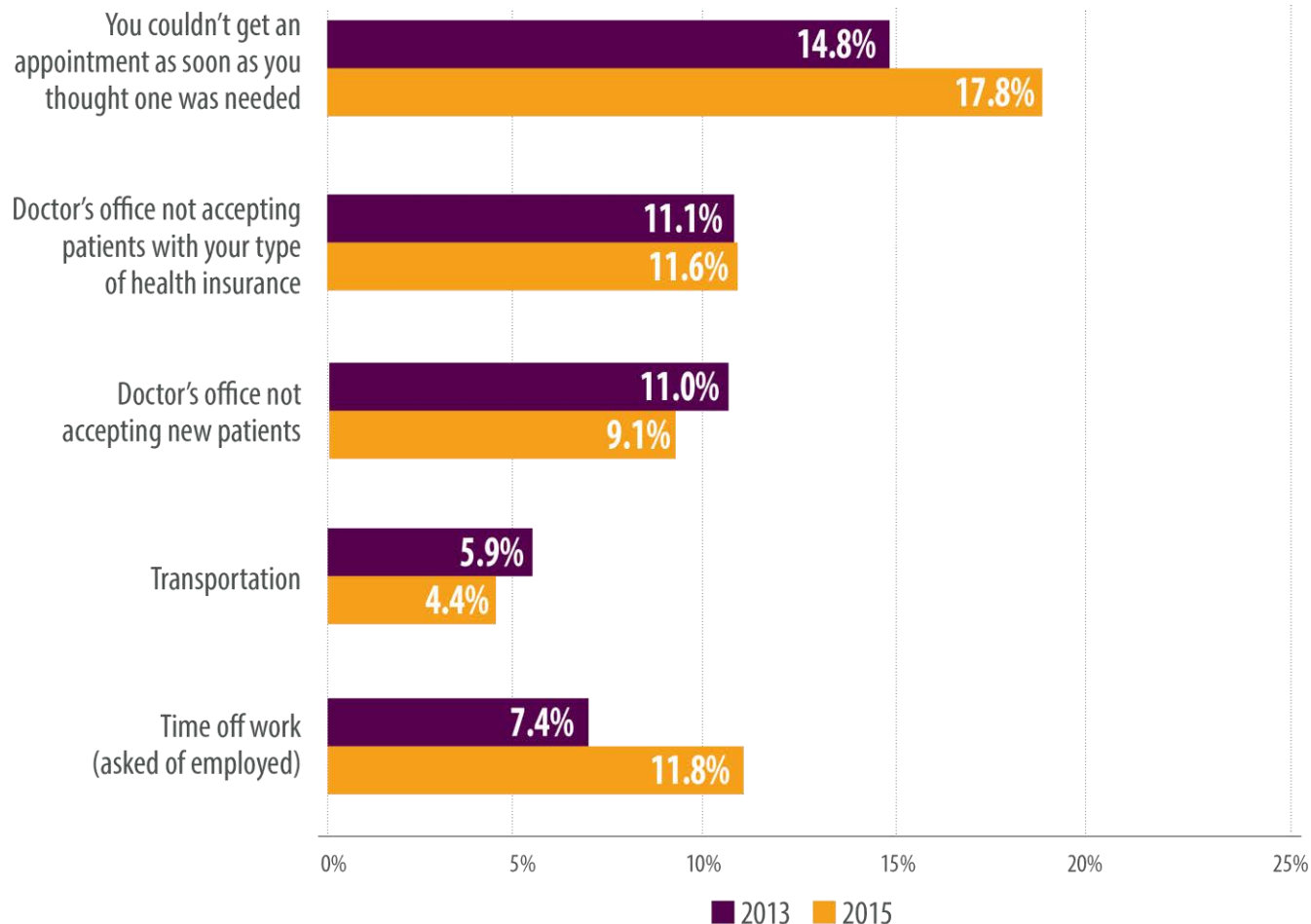


STORY 8

Access to Care: Better Than We Thought

In the Past year, You Did Not Get Care Because ...

El Paso County, 2013-2015



STORY 9

Consumer Engagement is a Mixed Bag

Health Coverage Literacy

- *El Paso County adults who feel confident in understanding each insurance term*

90.5% Premium

- **93.1% Deductible**

93.5% Copayment

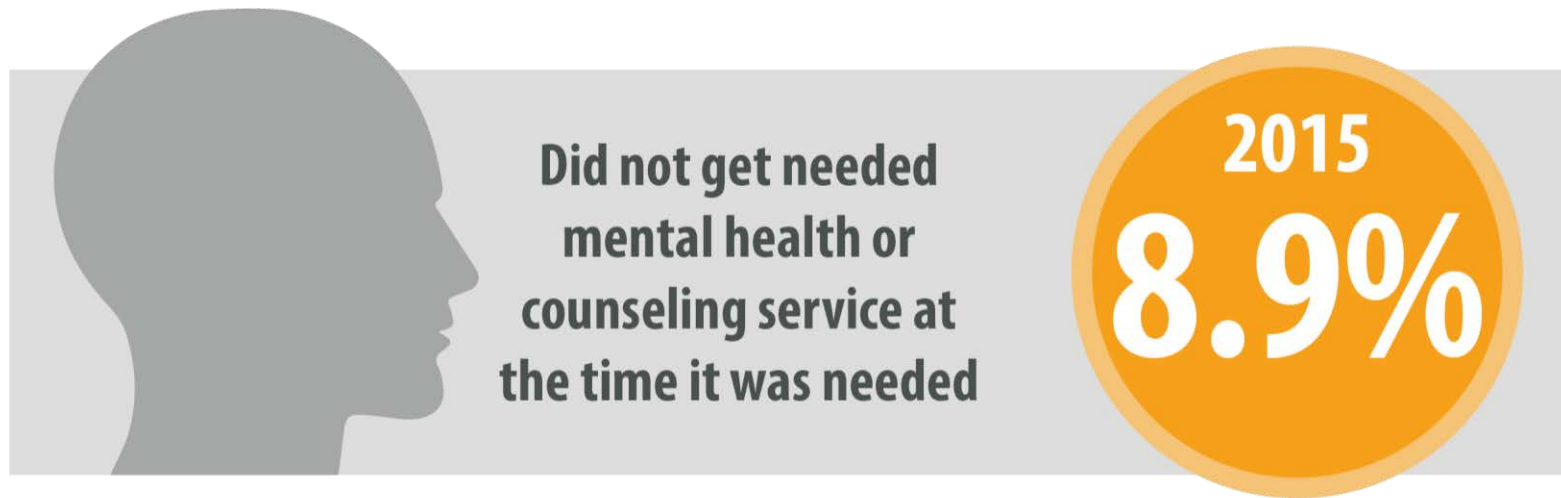
- **66.8% Co-insurance**

STORY

10

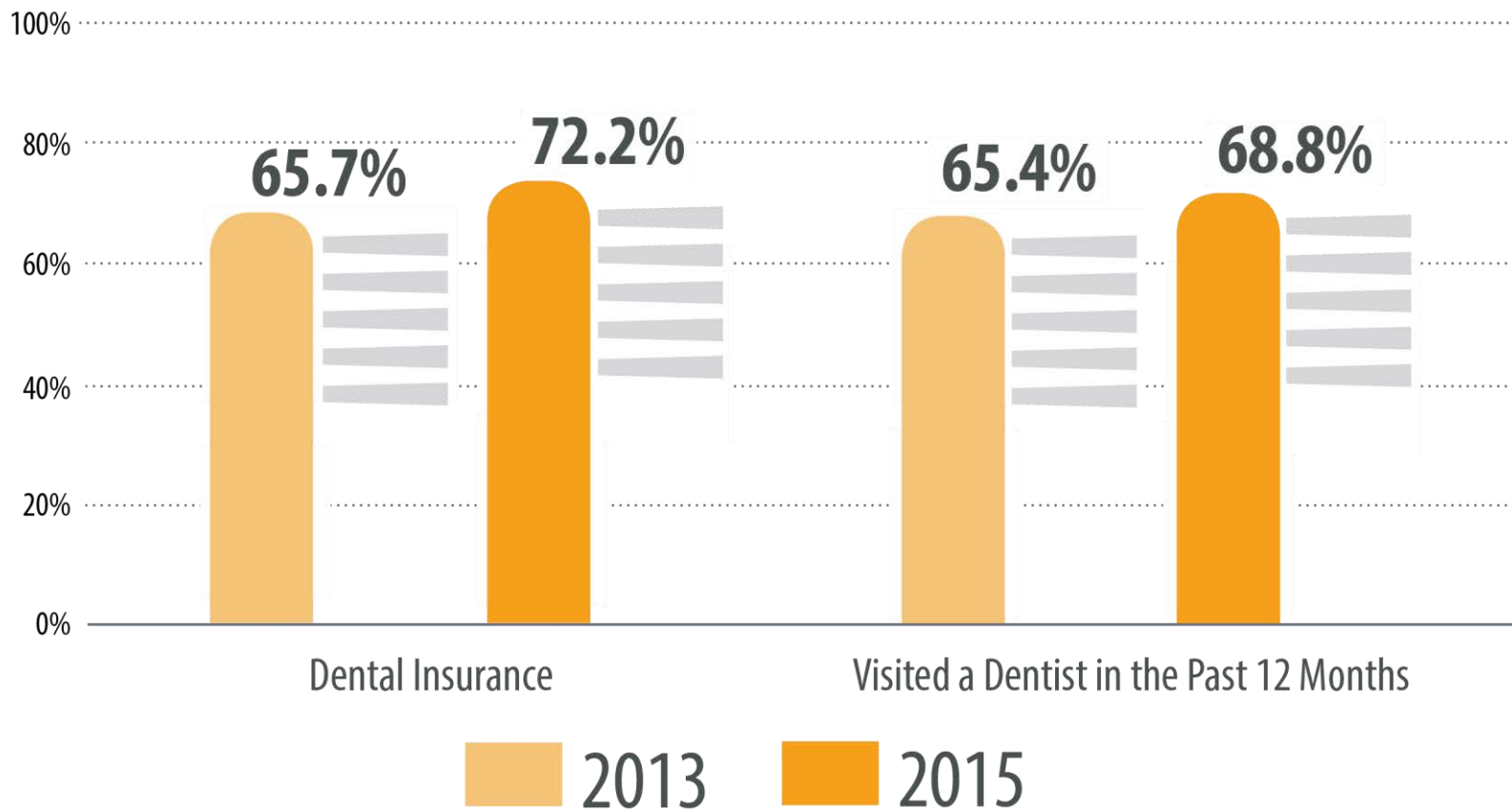
Mental and Dental are the Next Frontiers.

Mental Health in El Paso County



A Lot More Coverage, a Bit More Use

Dental Insurance and Dental Utilization in El Paso County, 2013-2015





Online
Coloradohealth
institute.org

Email data requests to
CHAS@coloradohealthinstitute.org

 **#2015CHAS**

COLORADO HEALTH ACCESS SURVEY



Need more information?

Email chas@coloradohealthinstitute.org **Online** coloradohealthinstitute.org

CHAS: How It Was Fielded



Who: 10,136 randomly selected households



What: Twenty-minute telephone survey



When: Between March 2 and June 26, 2015



Where: Statewide, divided among 21 Health Statistics Regions



Why: To gather information that can inform policy-making and help measure health reform efforts