

The Promise of Health Care Integration: SIM, Scope of Practice and Shaping the Future

February 18, 2015

CHI Legislative Lunch and Learn



Today's Discussion

- Why is everyone talking about integration?

What is it?

What does it mean for **Colorado**, your **work** and your **constituents**?

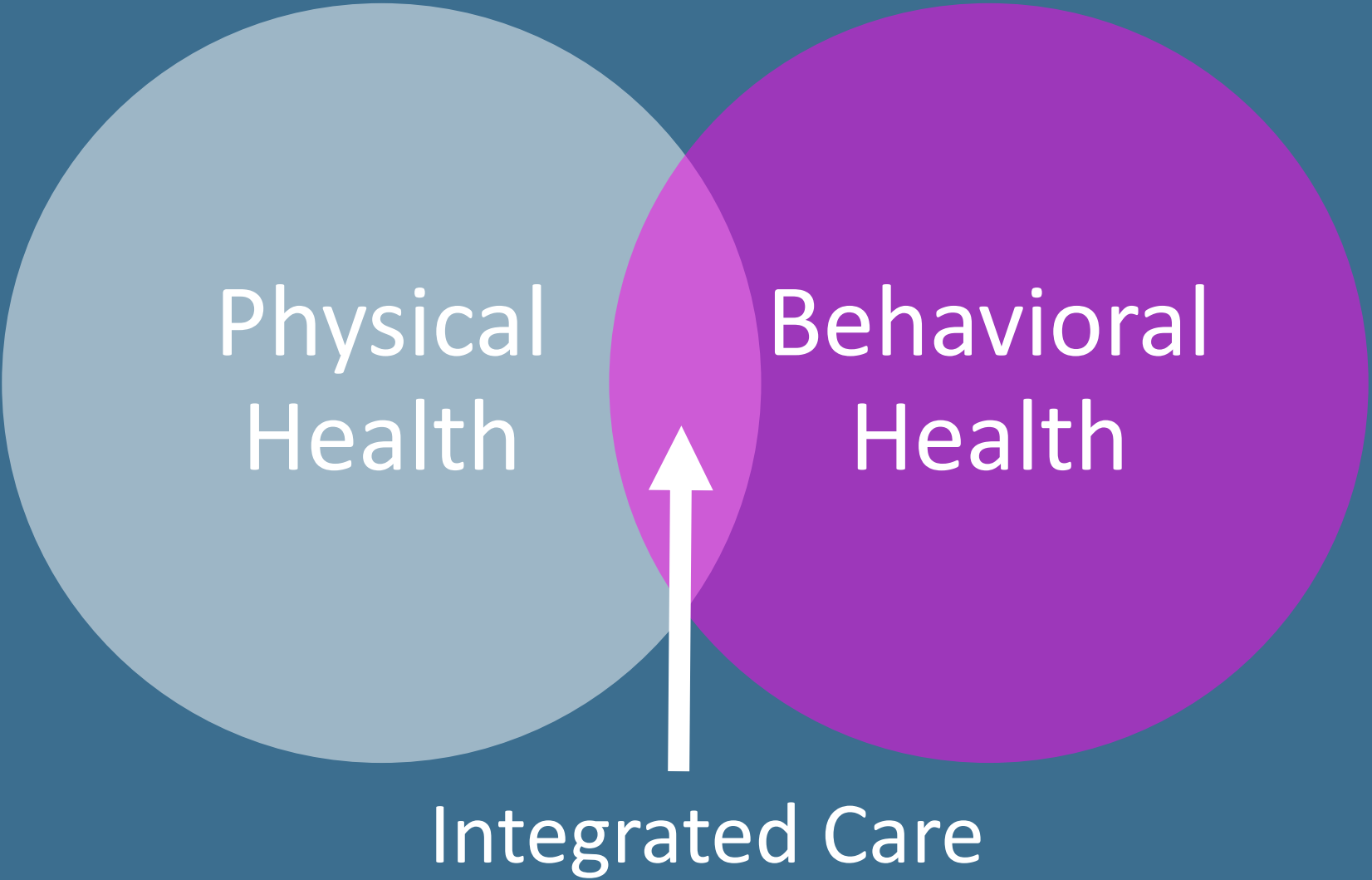
What are the **arguments**, the **evidence** and the **decisions** facing you?

Three Takeaways

- Integration is a (reasonably) good bet to deliver better, lower-cost care.
- It requires changes in the health care system and the workforce, some of which lawmakers can enable.
- Successful implementation will mean that your constituents can access care more efficiently.



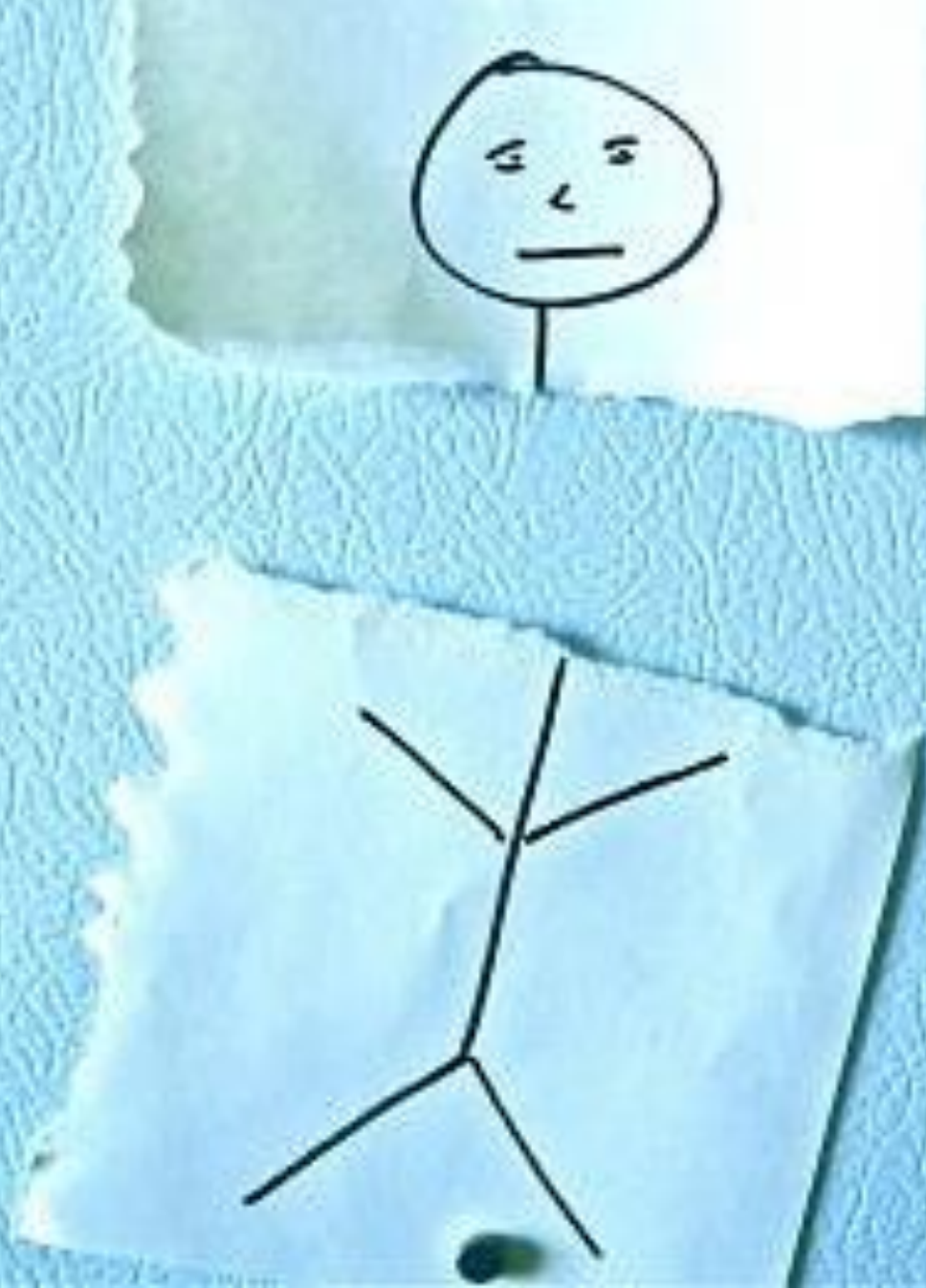
*So What Is Integration
Anyway?*



Physical
Health

Behavioral
Health

Integrated Care



Historically,
the head has
been treated
separately
from the
body.



Behavioral Health

- *Mental Health*
- *Substance Use Disorders*
- *Behaviors Contributing to Poor Diet, Lack of Exercise, Other Conditions*



50%

**of all
behavioral
health
disorders
are treated
by primary
care**

Of Those Reporting Good Mental Health ...

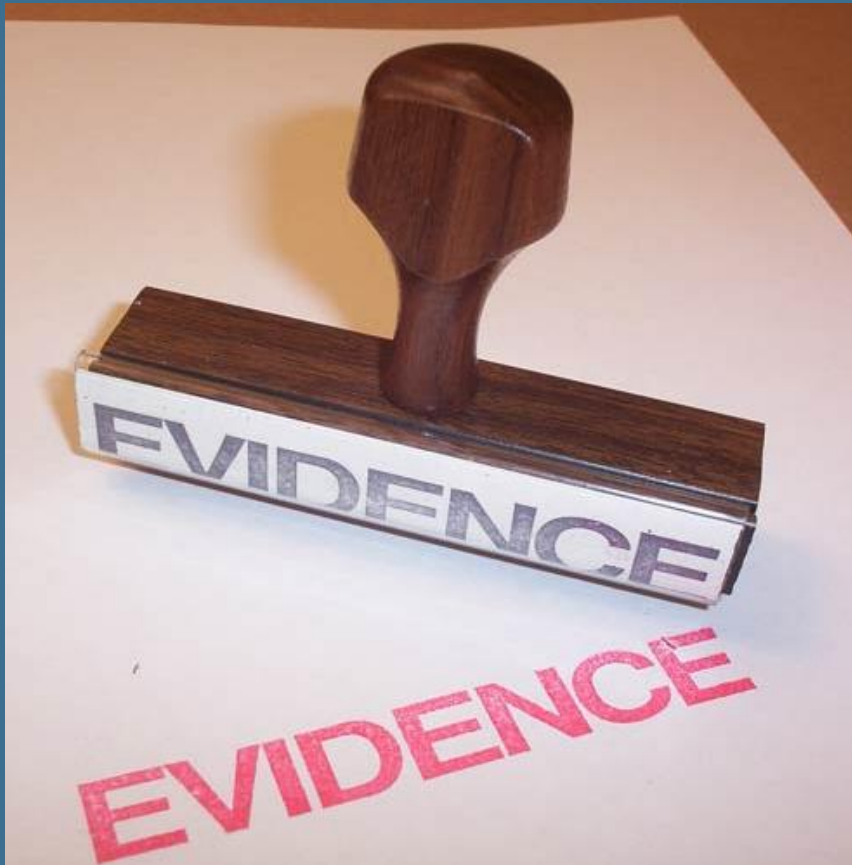
90.0%
Report Good
Physical Health

Of Those Reporting Poor Mental Health ...

55.3%
Report Good
Physical Health

Source: 2013 Colorado Health Access Survey

How Good is the Case for Integrated Care?



- Health and quality of care generally improves.
- Use of ED and other services decreases.
- High initial investment but lower long-term costs.



At the State Level

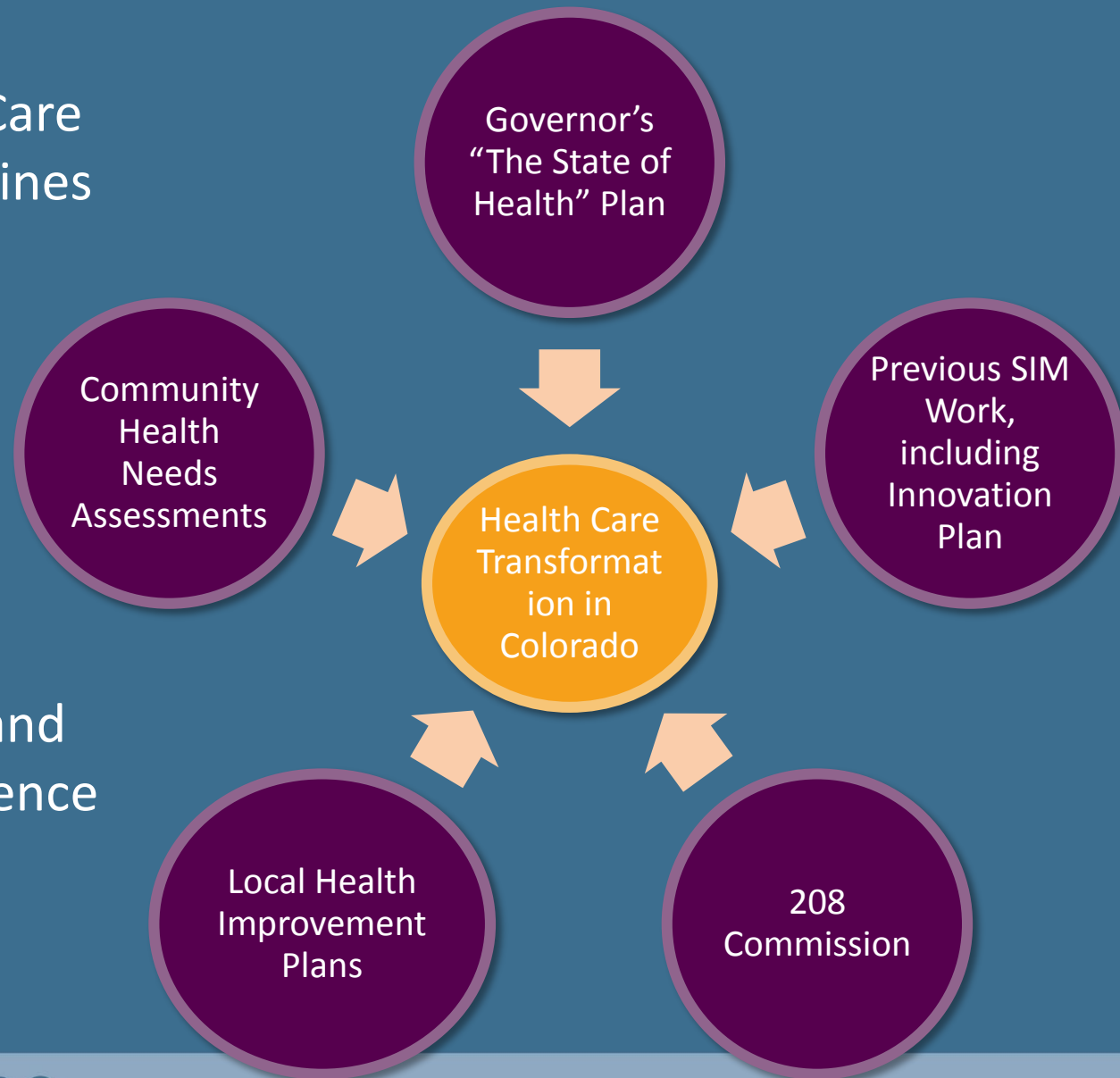
Federal Challenges and State Initiatives



SIM Overview: Building Blocks

The Colorado Health Care Innovation Plan Combines **Core Elements** to Produce:

- Payment reform coupled with care redesign.
- Plan to improve population health and patient care experience and control costs.
- Statewide impact.



SIM is Cumulative: Efforts Underway

- Patient Centered Medical Home
- Medicaid's Accountable Care Collaborative
- Medicaid Payment Reform Pilot Program (HB 12-1281)
- Comprehensive Primary Care Initiative

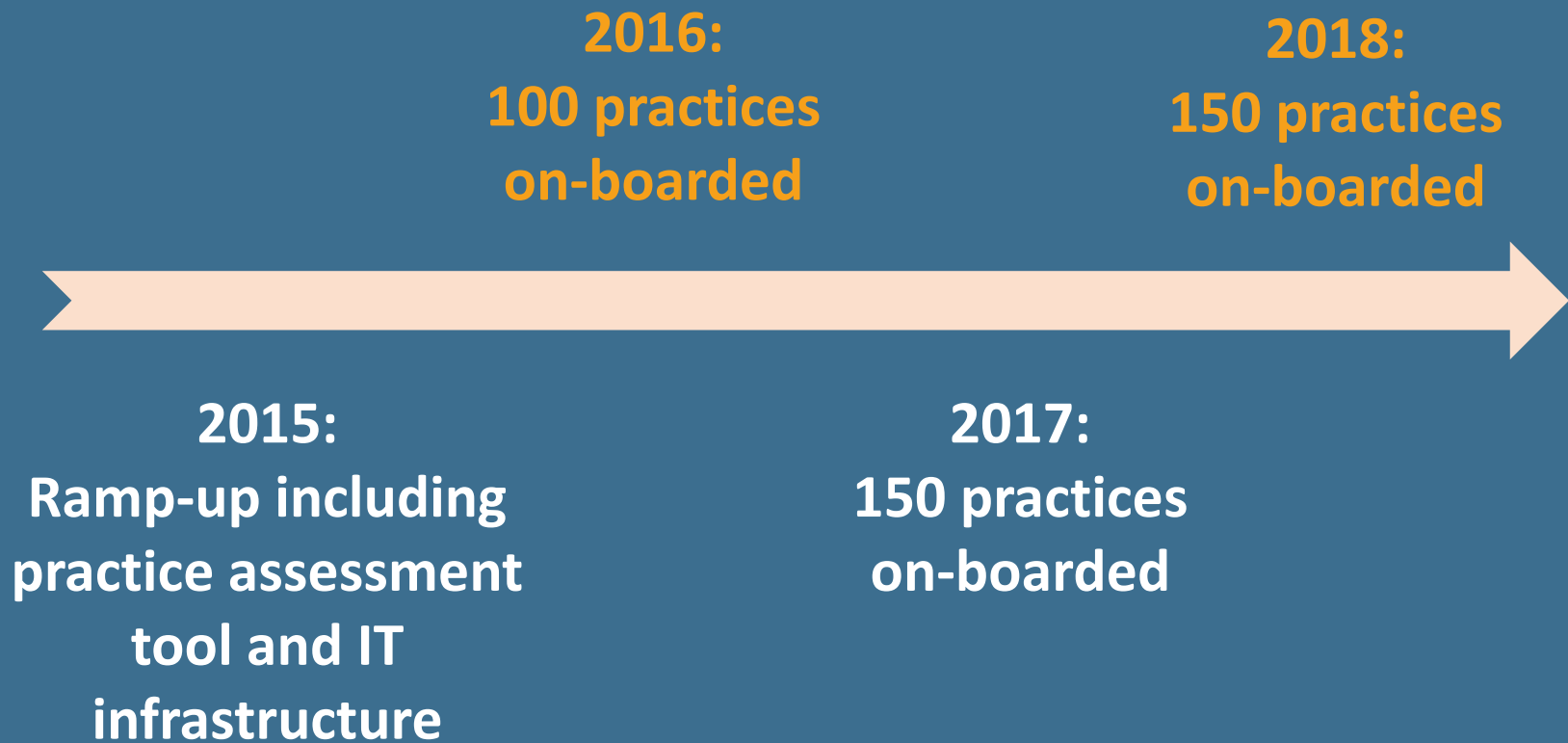


SIM Practice Transformation

- **Right Care, Right Time, Right Place**
- **Highlights**
 - Intensive practice support for 400 practices across Colorado:
 - Business coaching
 - IT
 - Facilitation

SIM Practice Transformation

- **Operational Plan**



SIM Population Health & Consumer Engagement

- **All Health is Local**
- **Highlights:**
 - Colorado's Winnable Battles:
 - Substance use disorder
 - Mental health
 - Obesity
 - Regionally based “population health transformation collaboratives”

SIM Population Health & Consumer Engagement

- **Operational Plan:**

2016-2018:

**Launch collaboratives;
align funding with regional needs;
bi-annual convening of collaboratives**

2015:

**Regional planning;
review community
assessments**



*Integration Under the
Golden Dome*

Legislative Choices in 2015

1. Balancing Parity and Costs
2. Doing More with Less
3. Expanding Scopes of Practice

Balancing Parity and Costs

- **HB 1029** : Telehealth expansion
- **HB 1151**: Medicaid provider rates
- **SB 15**: Coverage for autism spectrum disorders
- **SB 19** and **SB 52**: Connect for Health Colorado
- **SB 71**: Pharmacists may substitute medication
- **SB 123**: Customers may choose any in-network pharmacy

Doing More with Less (Or the Same)

- **HB 1029:** Telehealth, again
- **HB 1032:** More professionals may provide mental health care to minors
- **HB 1015:** Out-of-state EMS providers
- **HB 1075:** Registered naturopathic doctors may treat children

Expanding Scopes of Practice

- **HB 1182:** Expand scope of practice for certified nurse aides
- **Future bill:** Advanced practice nurse prescriptive authority
- **Future bill:** Dental hygienist authority to perform temporary fillings



*Integration And Your
Constituents*

How is This Playing Out Across Colorado?

Behavioral
Health
Providers

Primary Care
Providers



A Patient's Experience



Hearing from You

- *What are you hearing from your constituents?*
- *What are your policy questions related to integration?*

Three Takeaways

- Integration is a (reasonably) good bet to deliver better, lower-cost care.
- It requires changes in the health care system and the workforce, some of which lawmakers can enable.
- Successful implementation will mean that your constituents can access care more efficiently.



colorado health
INSTITUTE

Michele Lueck

720.382.7073

lueckm@coloradohealthinstitute.org

Jeff Bontrager

720.382.7075

bontragerj@coloradohealthinstitute.org