

# Colorado Health Observation Regional Data Service (CHORDS)

*Harmonizing Information  
for a Healthier Colorado*



**Summer 2017**  
Colorado Health Institute



# CHORDS

Harmonizing Information for a Healthier Colorado

CHORDS is a network conceived in 2011 that uses electronic health record (EHR) data to support public health evaluation, monitoring and research efforts.

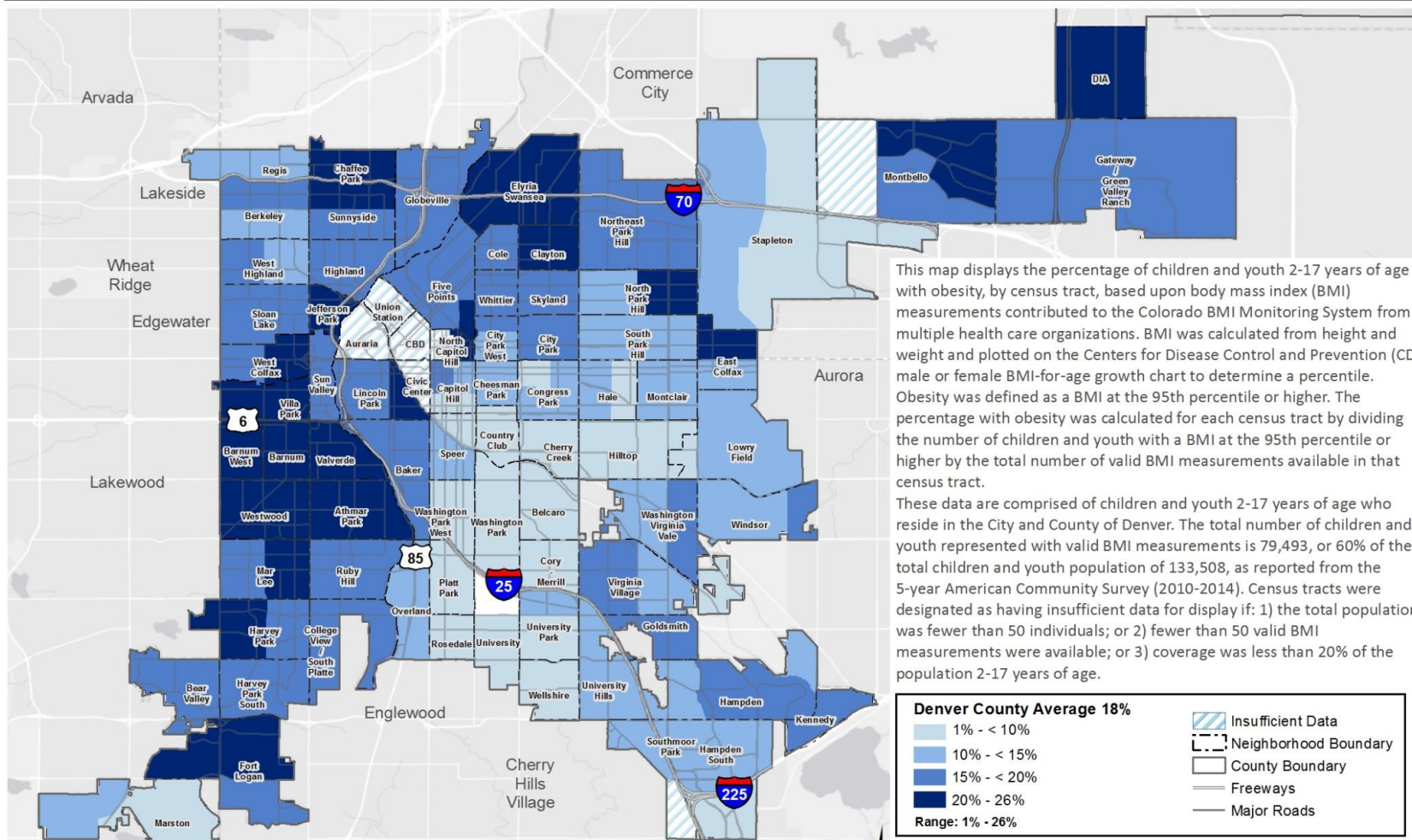


# CHORDS: A Primer

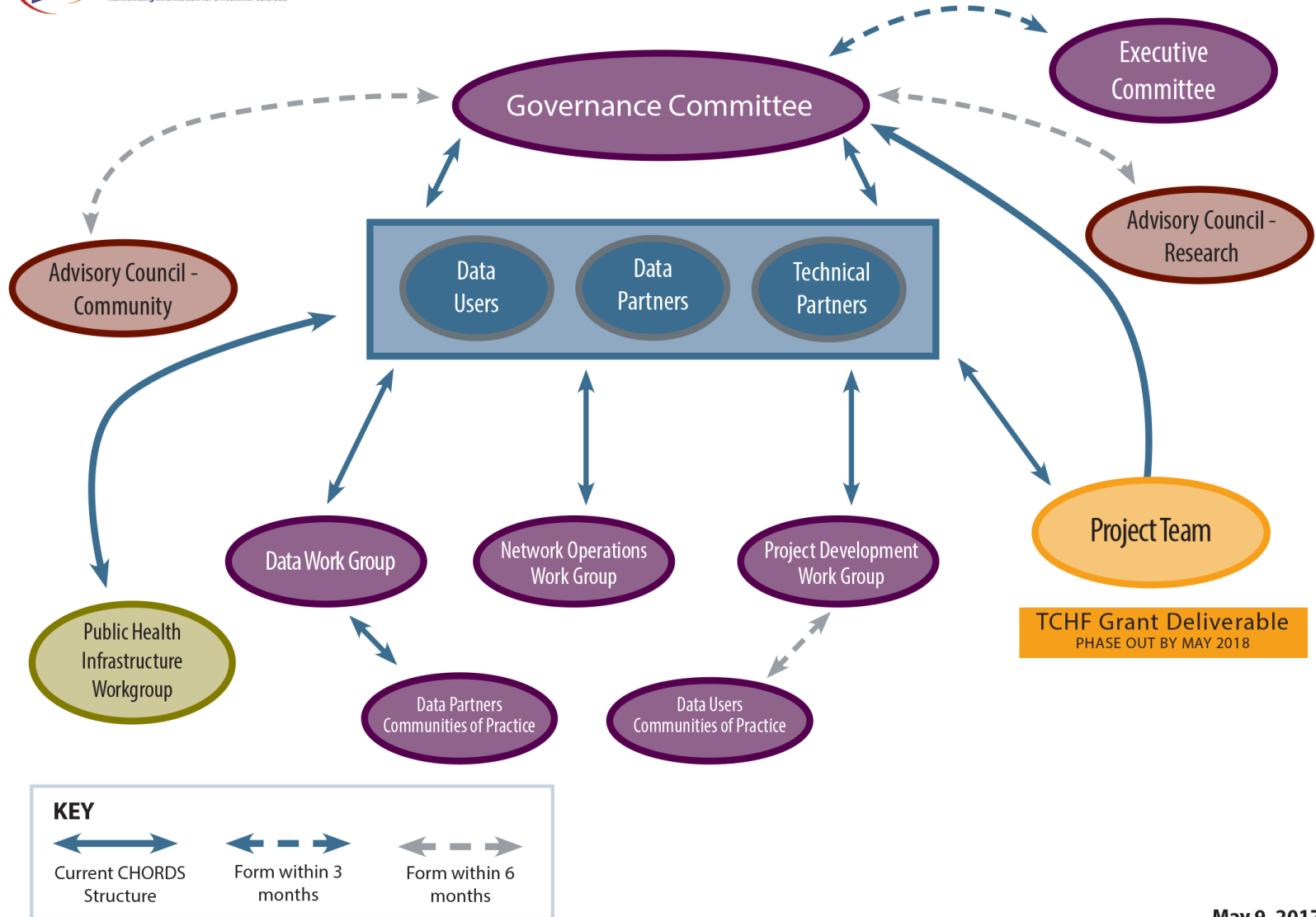
- **Data Partners:**  
Currently, 12 health provider organizations contribute data
- **Data Users:**  
Users are public health agencies serving the seven-county Denver Metro region
- **Goal:**  
Expanded use of EHR data to achieve public health goals through reliable and location-specific information

# Neighborhood Level-Data Enable Targeted Efforts

## Estimated Prevalence of Children and Youth with Obesity (2012-2014): City and County of Denver



# CHORDS Network



May 9, 2017

# Participating Institutions

**Data Users:**  
**Denver Metro  
Public Health Agencies**

**Technology Partner:**  
**University of Colorado  
Anschutz Medical Campus**

**Convener: CHI**

**Technology Partner:**  
**CORHIO**

**Data Partners:**  
**Health Care and  
Mental Health Partners**



# CHORDS Data Partners



## Health Systems

- Children's Hospital Colorado
  - Denver Health
- Kaiser Permanente Colorado



## Mental Health Centers

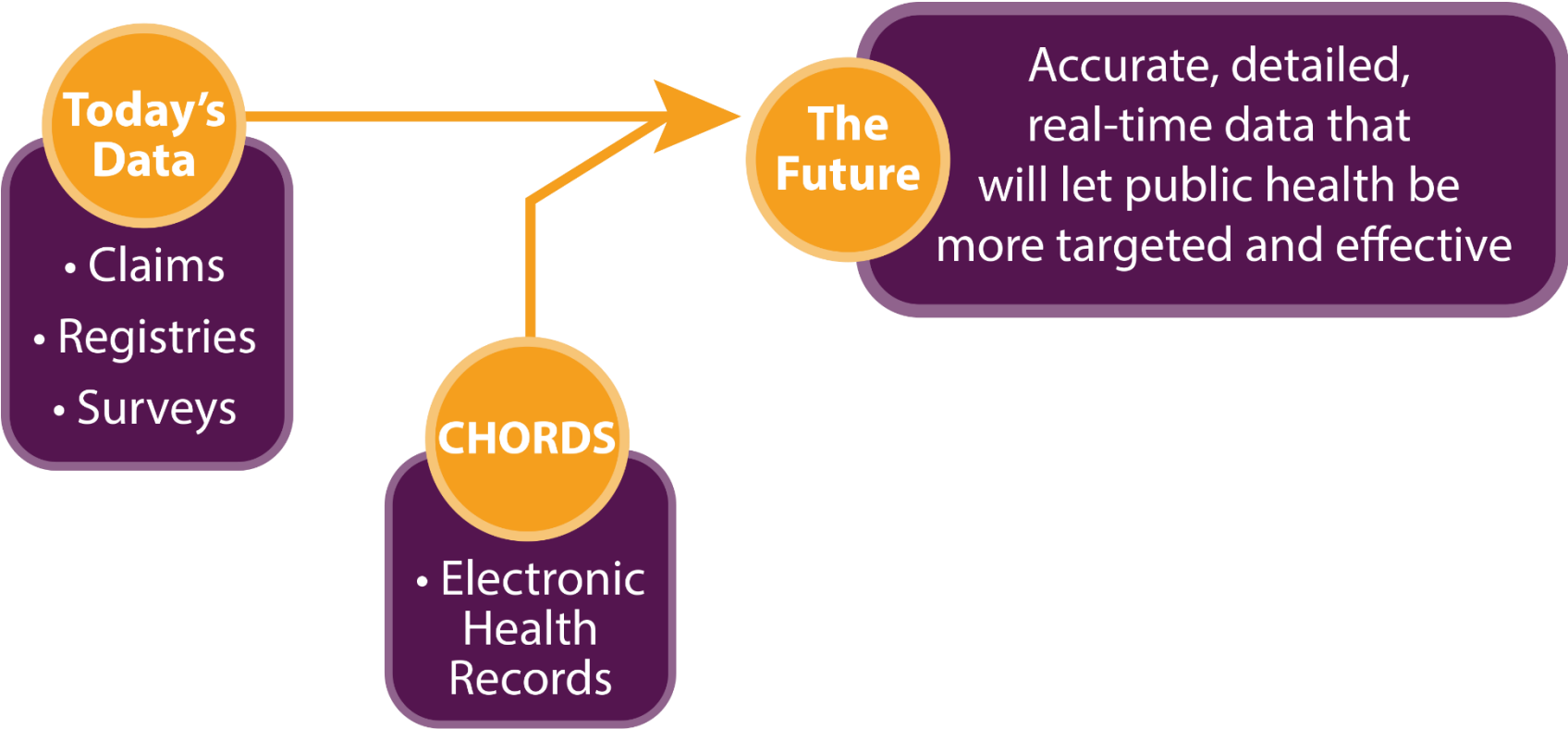
- Mental Health Center of Denver
- Jefferson Center for Mental Health



## Safety Net Providers

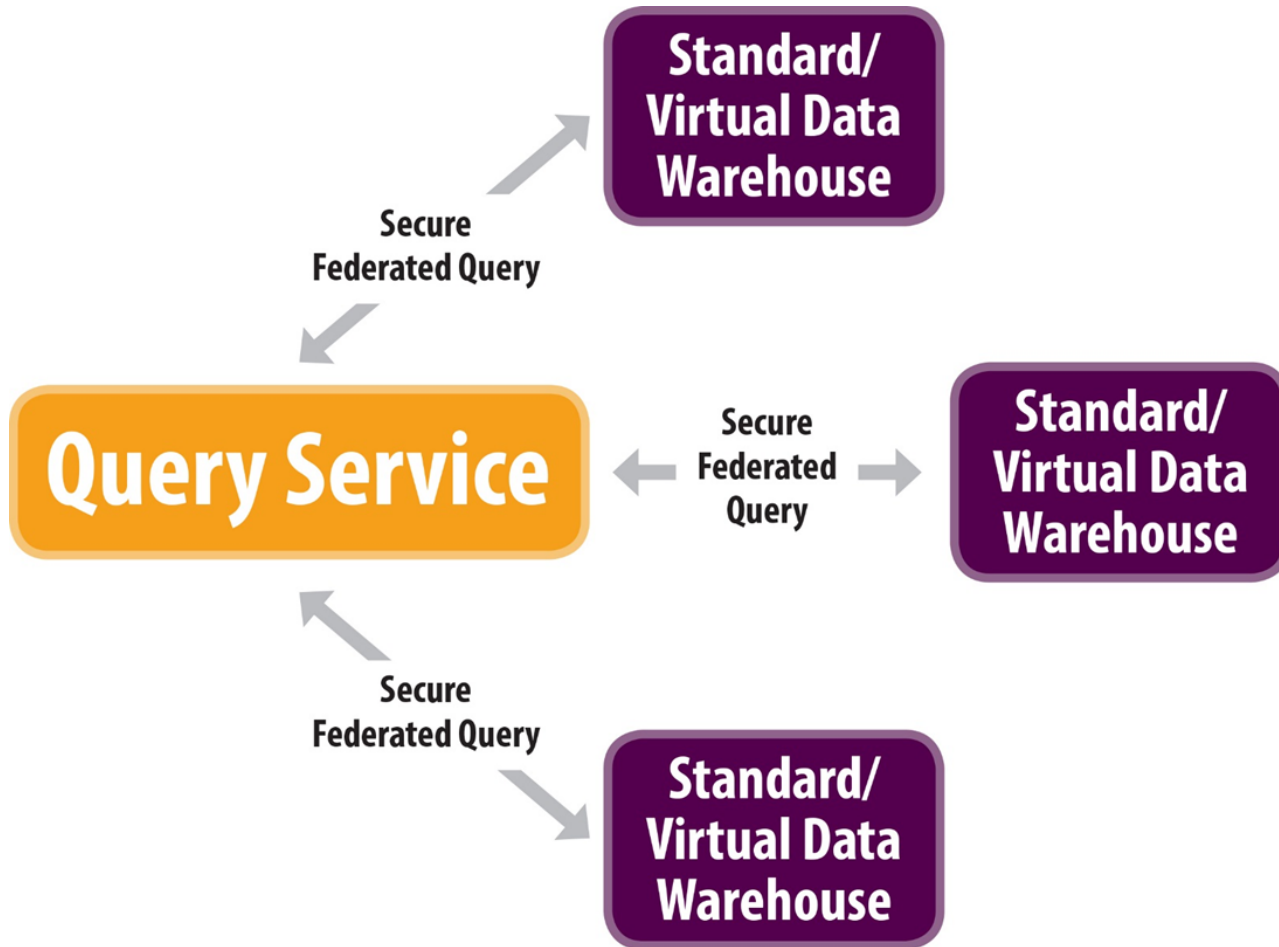
- Clinica Family Health
- Colorado Alliance for Health Equity and Practice
  - Colorado Coalition for the Homeless
  - High Plains Community Health Center
  - Metro Community Providers Network
    - Salud Family Health Centers
    - Clinica Tepeyac

# The Promise of Innovation





# CHORDS Data Shared Securely



# Enhancing Data Reliability



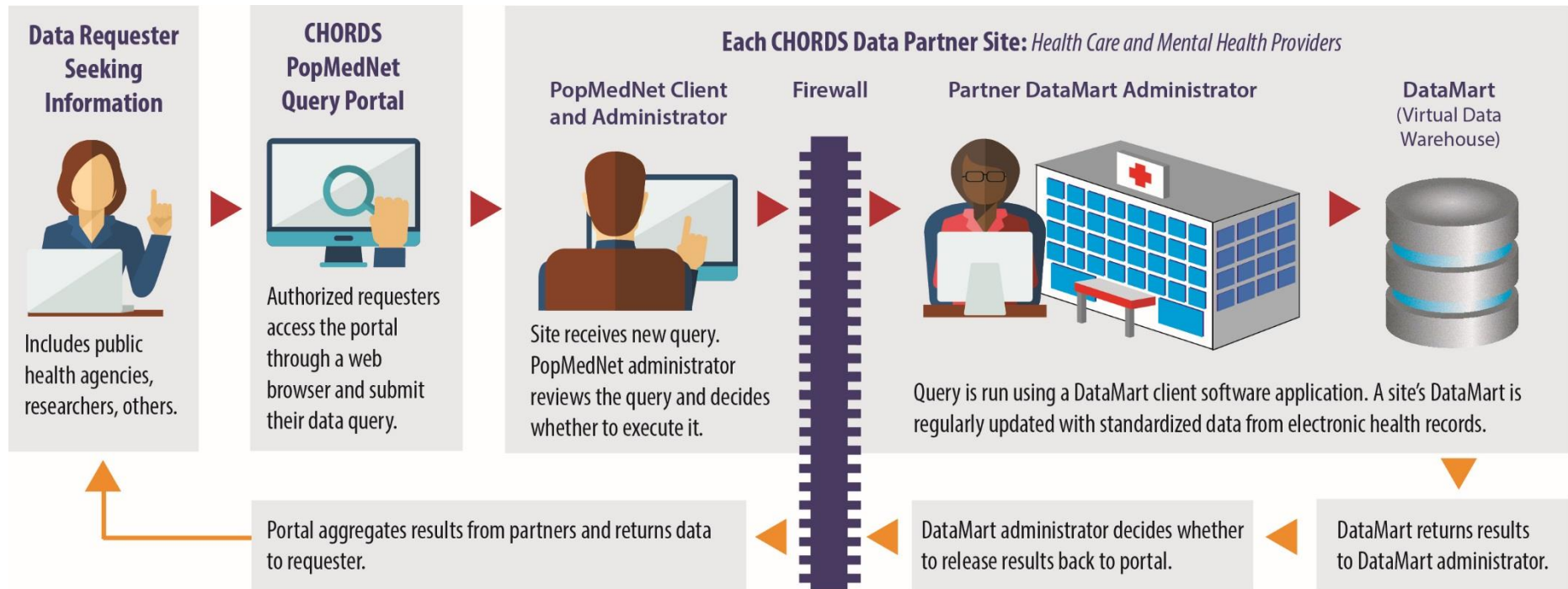
- Many existing data sources rely on self-reported measures
- CHORDS uses EHR data, accessing measurements entered by providers

# Maintaining Patient Privacy

- CHORDS provides aggregated data for use by public health agencies
- Information cannot be traced back to individual patients
- Each data partner retains full control over their patients' data



# The Query Process



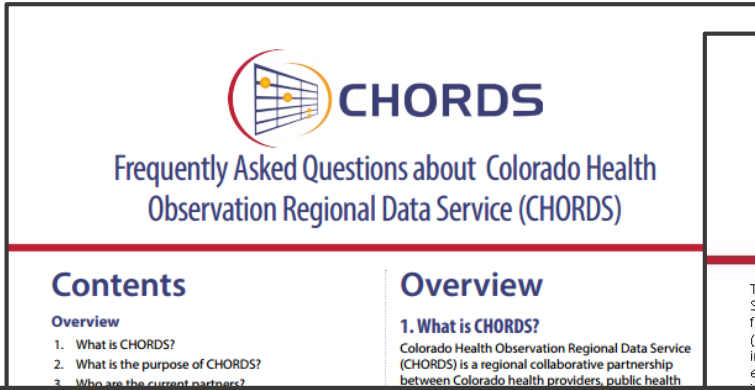
# CHORDS Areas of Focus

- Body Mass Index/Obesity
- Cardiovascular Disease
- Diabetes
- Mental Health
- Opioids

Other public health topics will follow.



# Additional Resources



**CHORDS**  
Harmonizing Information for a Healthier Colorado

## Frequently Asked Questions about Colorado Health Observation Regional Data Service (CHORDS)

---

### Contents

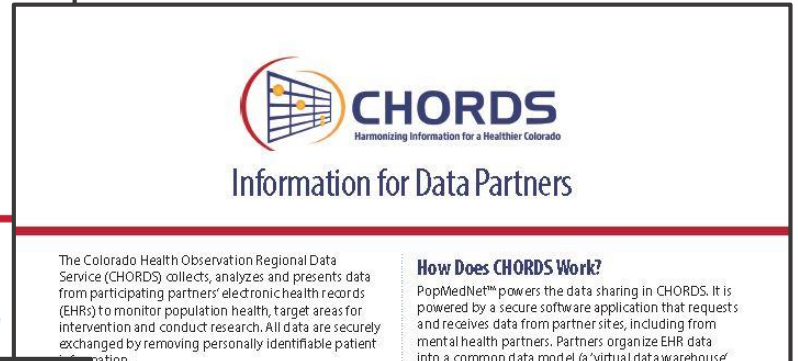
**Overview**

1. What is CHORDS?
2. What is the purpose of CHORDS?
3. Who are the current partners?

### Overview

#### 1. What is CHORDS?

Colorado Health Observation Regional Data Service (CHORDS) is a regional collaborative partnership between Colorado health providers, public health...



**CHORDS**  
Harmonizing Information for a Healthier Colorado

## Information for Data Partners

The Colorado Health Observation Regional Data Service (CHORDS) collects, analyzes and presents data from participating partners' electronic health records (EHR) to monitor population health, target areas for intervention and conduct research. All data are securely exchanged by removing personally identifiable patient information.

### How Does CHORDS Work?

PopMedNet™ powers the data sharing in CHORDS. It is powered by a secure software application that requests and receives data from partner sites, including from mental health partners. Partners organize EHR data into a common data model (a "virtual data warehouse" or VDW) and establish a connection to the CHORDS network using PopMedNet.

In this distributed network, data partners retain full control over their data; decide which data are available for querying; which queries are approved and executed; whether results are returned to requestors; and who is permitted to submit queries. CHORDS adheres to IRB, HIPAA and 42 CFR regulations, and exchanges data in accordance with established governance policies and procedures.

### Why Become a Data Partner?

Electronic health records are a critical source of population health data. Sharing and using these data will improve our collective understanding of obesity, hypertension and other health issues. These data create a more comprehensive picture of health in communities.



**COLORADO HEALTH INSTITUTE**  
Informing Policy. Advancing Health.

Analysis Data Services About

## Colorado Health Observation Regional Data Service

The Colorado Health Observation Regional Data Service (CHORDS) is a seven-county regional network in the Denver metro area that uses electronic health record data to support public health evaluation and monitoring efforts.

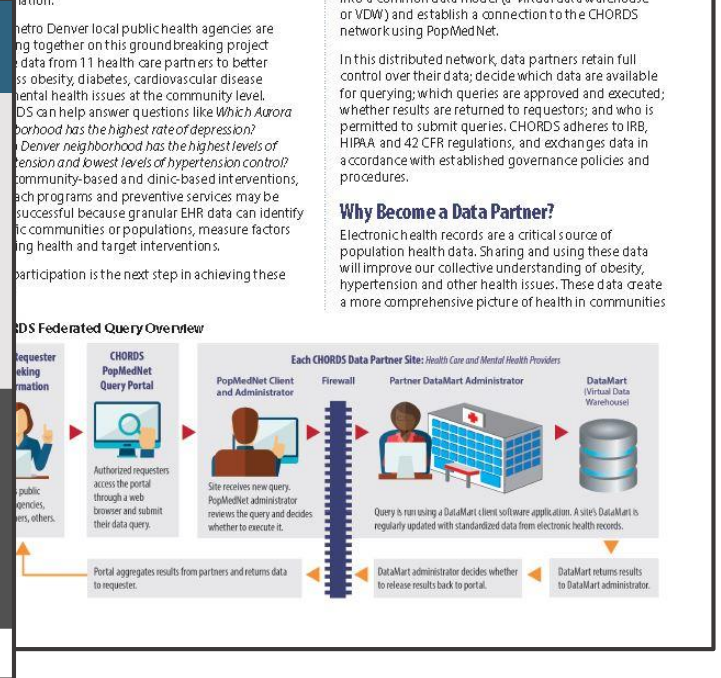
Date last updated: November 2, 2016

Community Health Health Information Technology

Download graphics and datasets used

- Press Release
- CHORDS FAQs
- Data Partners Overview
- About CHORDS Presentation

**CHORDS**  
Harmonizing Information for a Healthier Colorado



Resources online at  
[www.coloradohealthinstitute.org/research/colorado-health-observation-regional-data-service](http://www.coloradohealthinstitute.org/research/colorado-health-observation-regional-data-service)





## Questions about CHORDS?

Contact Sara at  
[schmitts@coloradohealthinstitute.org](mailto:schmitts@coloradohealthinstitute.org)



COLORADO HEALTH INSTITUTE

[coloradohealthinstitute.org](http://coloradohealthinstitute.org)   @COHealthInst